

VideoXpert Integration – JCI P2000

Installation Manual

Contents

- 1. Introduction 3
- 2. Abbreviations 3
- 3. Version Information 3
 - 3.1. Integration Component Version 3
 - 3.2. VideoXpert Version 3
 - 3.3. JCI P2000 Version 3
- 4. System Overview..... 3
- 5. Platform Specification 4
- 6. Prerequisites 4
- 7. Installation Steps..... 6
 - 7.1. Step 1 – Start installation 6
 - 7.1. Step 2 – License Agreement..... 6
 - 7.2. Step 3 – Install Location 7
 - 7.3. Step 4 – Driver Configuration..... 8
 - 7.3.1. Pelco VideoXpert Connection 8
 - 7.3.2. JCI P2000 Connection..... 9
 - 7.3.3. Driver Service IPC Settings 11
 - 7.3.4. Manage Situations 11
 - 7.3.5. Manage Linked Cameras..... 13
 - 7.3.6. Driver Service Control 15
 - 7.4. Step 4 – Install Complete 15
- 8. System Configurations 16
- 9. Uninstallation Steps 16
 - 9.1. Step 1 – Start the Uninstallation..... 16
 - 9.2. Step 2 – Uninstall Complete..... 16
- 10. User Guide 16
- 11. References 17
- 12. Support..... 17
- 13. Copyright Notice 17

1. Introduction

This document is the release note for VideoXpert Integration with JCI P2000. The objective of this document is to provide information about the released version of integration component, its features, installation details and known issues.

2. Abbreviations

#	Abbreviation	Definition
1	VMS	Video Management System
2	VX	VideoXpert
3	VxSDK	VideoXpert Software Development Kit
4	ACS	Access control System

Table 1: Abbreviations

3. Version Information

3.1. Integration Component Version

#	Component Name	Version	Description
1	VideoXpertJCI P2000_Setup-3.1.13.311.msi	3.1.1	JCI P2000 Access Control Integration driver Installer

Table 2: Integration Component Version

3.2. VideoXpert Version

#	Component Name	Version	Remarks
1	VideoXpert Core	3.x	
2	VideoXpert Professional	3.x	
3	VideoXpert Media Gateway	3.x	
4	VideoXpert Storage	3.x	
5	VxSDK	3.0.0.1234	
6	Access Control System Viewer	3.4.0.0	

Table 3: VideoXpert Version

3.3. JCI P2000 Version

#	Component Name	Version	Remarks
1	JCI P2000	3.11	

Table 4: JCI P2000 Version

4. System Overview

The proposed solution is an integration driver for JCI P2000 security management system. This integration helps JCI P2000 to connect with VideoXpert. The integrated system allows end user to use VideoXpert to access information from JCI P2000. VideoXpert users may use Admin Portal or OpsCenter Client to view or acknowledge access control events from JCI P2000.

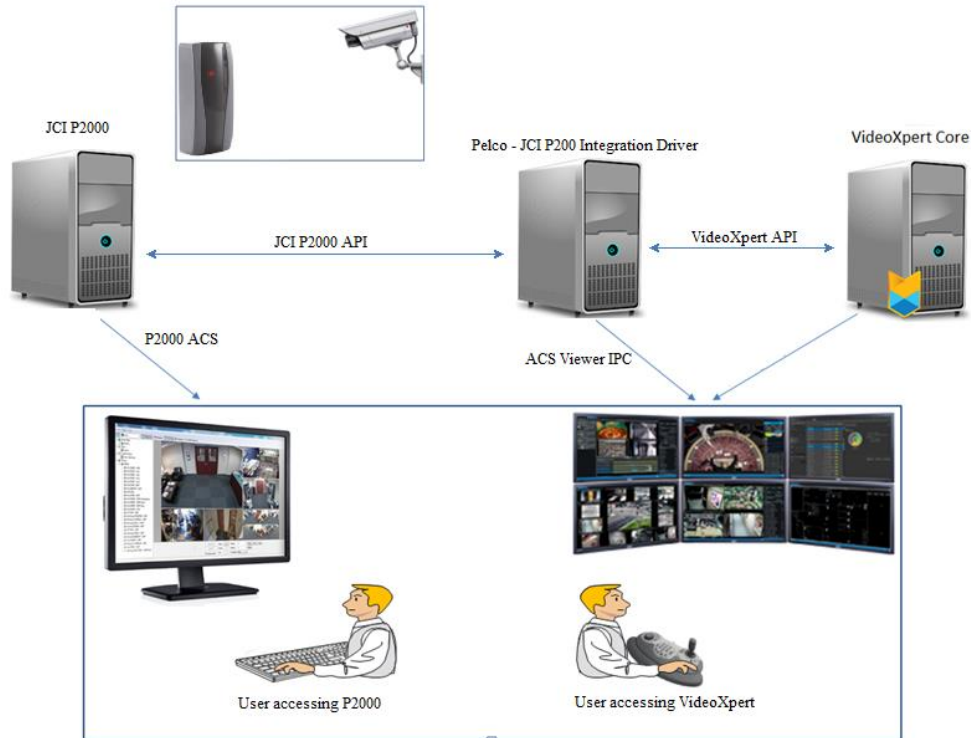


Figure 1: System Overview

The integration driver shall be using VxSDK for all its interfacing needs with VideoXpert. The integration driver also supports Pelco Access Control System Viewer to allow user information retrieval and control functionality of JCI P2000 devices in VideoXpert. This includes viewing JCI P2000 access control points and user lists in VideoXpert and sending control commands to the access control points.

5. Platform Specification

#	Parameter	Specification
1	Operating System	Windows 10 – 64Bit
2	Processor	Intel i7
3	RAM	8GB or above
4	Hard Disk	500GB

Table 5: Platform Specification

6. Prerequisites

The VideoXpert JCIP 2000 installs as a standalone windows service which integrates to the Access Control System plugin and the following are the prerequisites for this integration driver.

1. VideoXpert v3.x
VideoXpert software should be installed and licensed for the proper functioning of the integration.
2. Access Control System Viewer Plugin

Some features of this integration require the Access Control System Viewer plugin to be installed on the VxOpsCenter console machines.

3. Configuration in JCI P2000 system

Remote Server Settings configuration is required on the JCI P2000 system to allow events to be sent to the driver.

The PC on which this driver will be installed needs to be added into the JCI P2000 as a remote server to allow P2000 events and alarms to be set to the driver.

Contact your JCI P2000 administrator to add this configuration. This integration requires

- **Transmit messages to this server** to be enabled
- Enter a **Port** that the driver will be configured to listen on for events (see Alarm Port in section 7.2.3)
- Select the **XML Protocol** option.

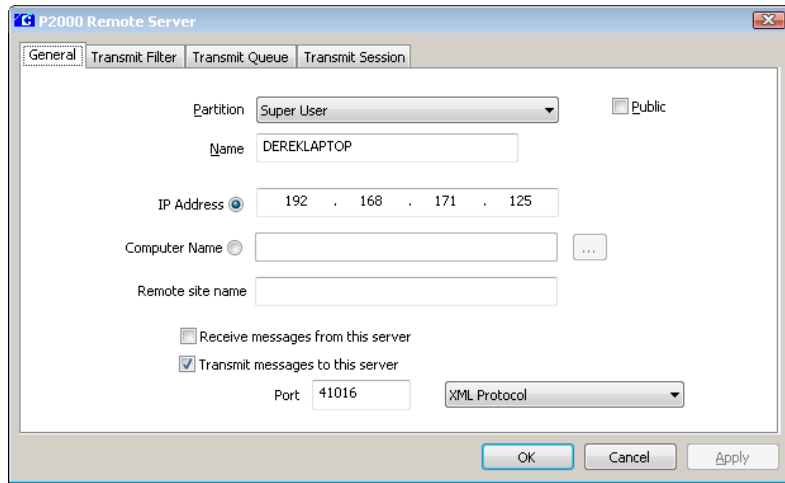


Figure 2: P2000 Remote Server Settings

External IP configuration must be set to allow retrieving access point and user information and commands to be issued to the P2000 server.

The JCI P2000 driver PC must be added as an external IP and enable the **Use XmlRpc** option.

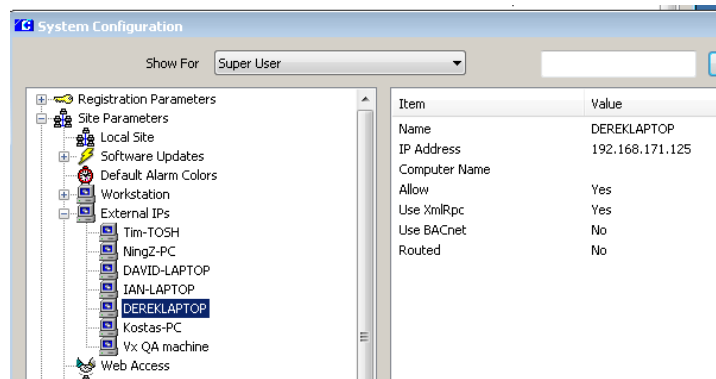


Figure 3: P2000 External IPs Settings

The **P2000 XmlRpc Interface Port** configured in the **Site Parameters** should be noted as will be required later.

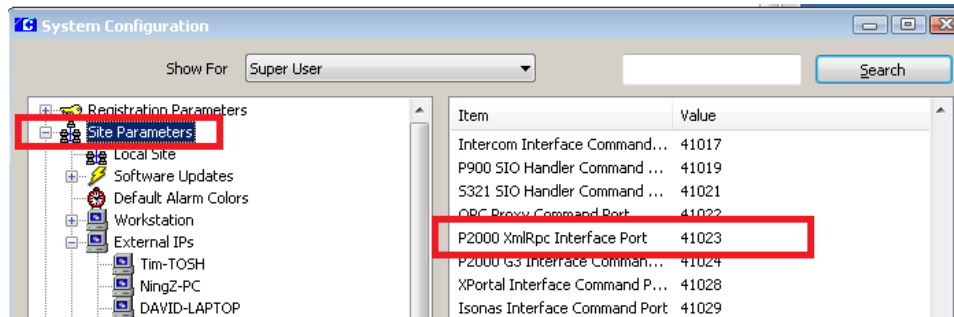


Figure 4: P2000 XmlRpc Port Settings

7. Installation Steps

7.1. Step 1 – Start installation

Double click on the VideoXpertJCI-P2000_Setup-x.x.x.x.exe file to start the installation. Installation wizard starts with the following window.

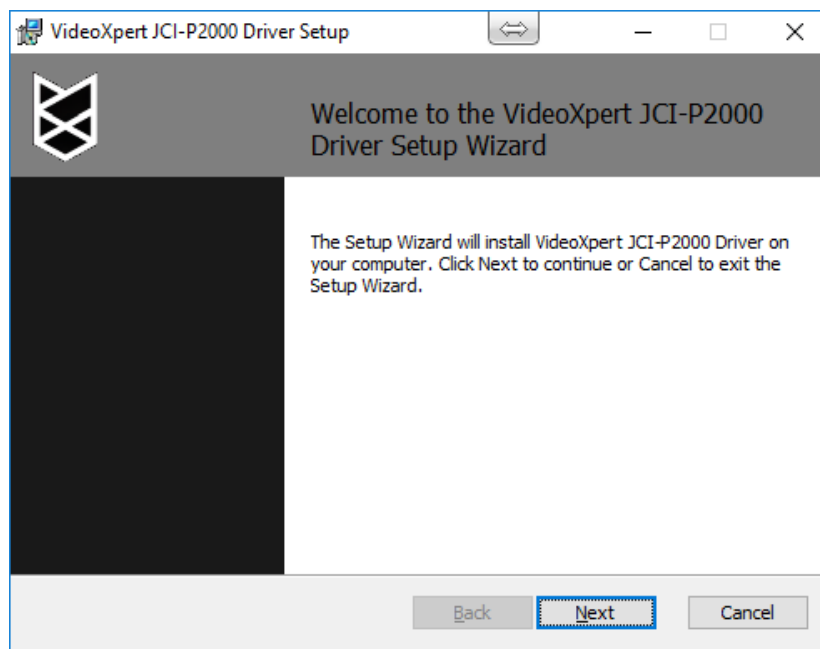


Figure 5: Installation home screen

Click **Next** button to start installation.

7.1. Step 2 – License Agreement

Accept the agreement and click **Next** to continue.

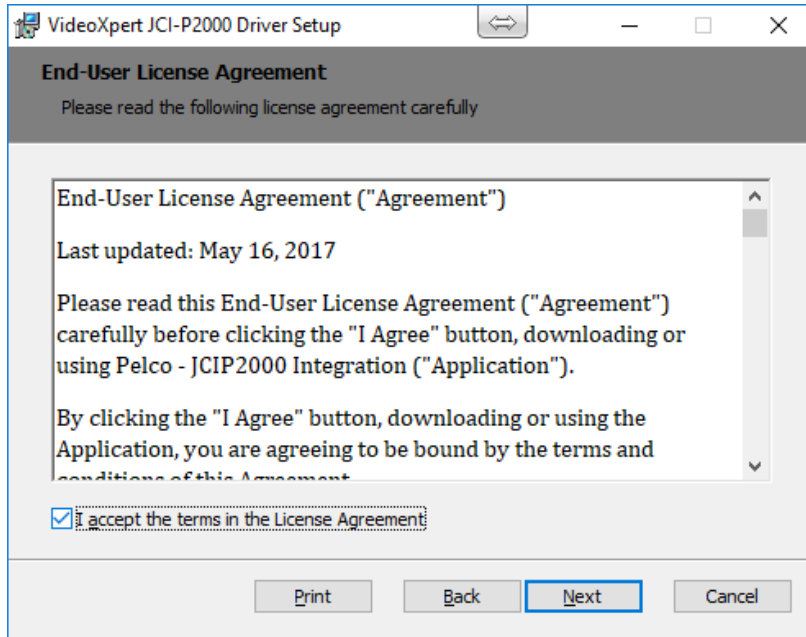


Figure 6: License agreement screen

7.2. Step 3 – Install Location

The install location is shown and can be changed from the default location if required.

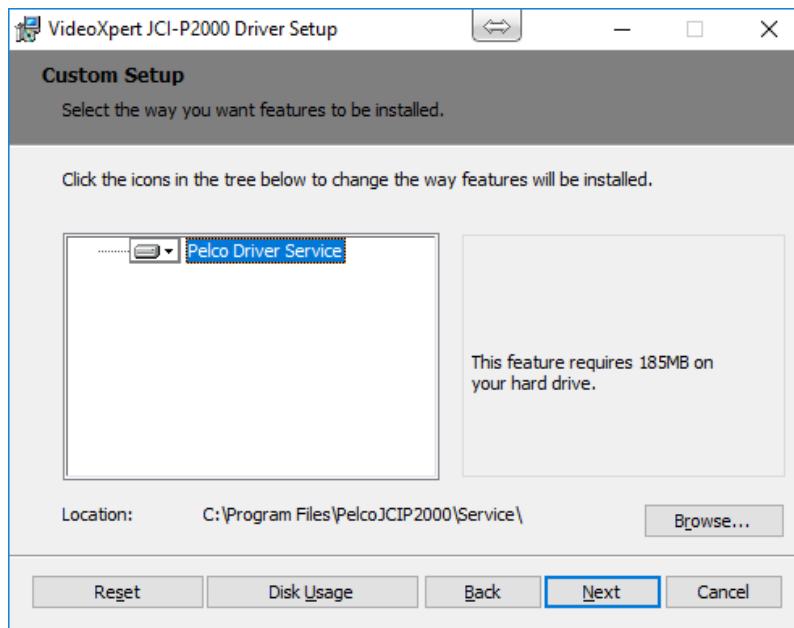


Figure 7: Install location screen

Click on **Next** to and then **Install** to start the install process.

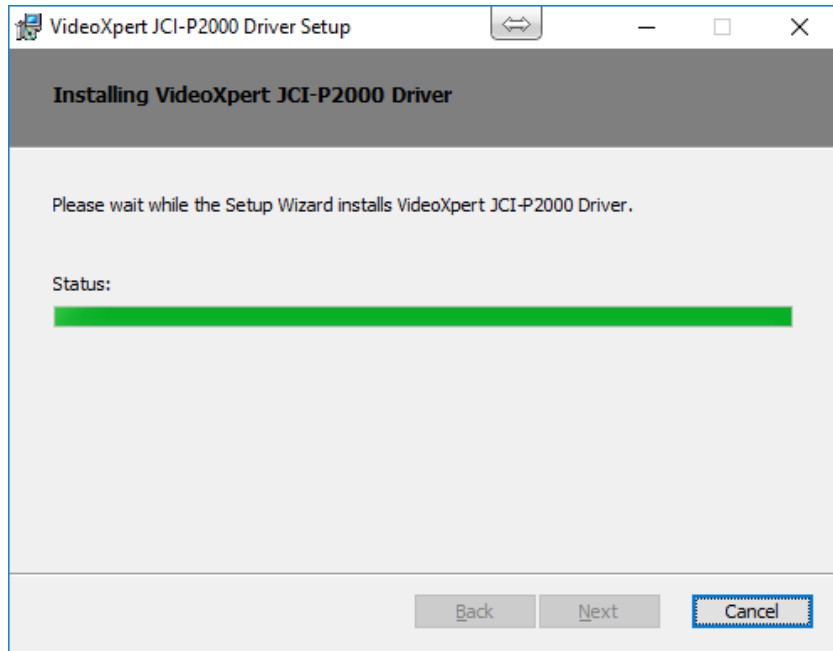


Figure 8: Install process screen

7.3. Step 4 – Driver Configuration

The JCI P2000 Driver Service Configuration Application opens.

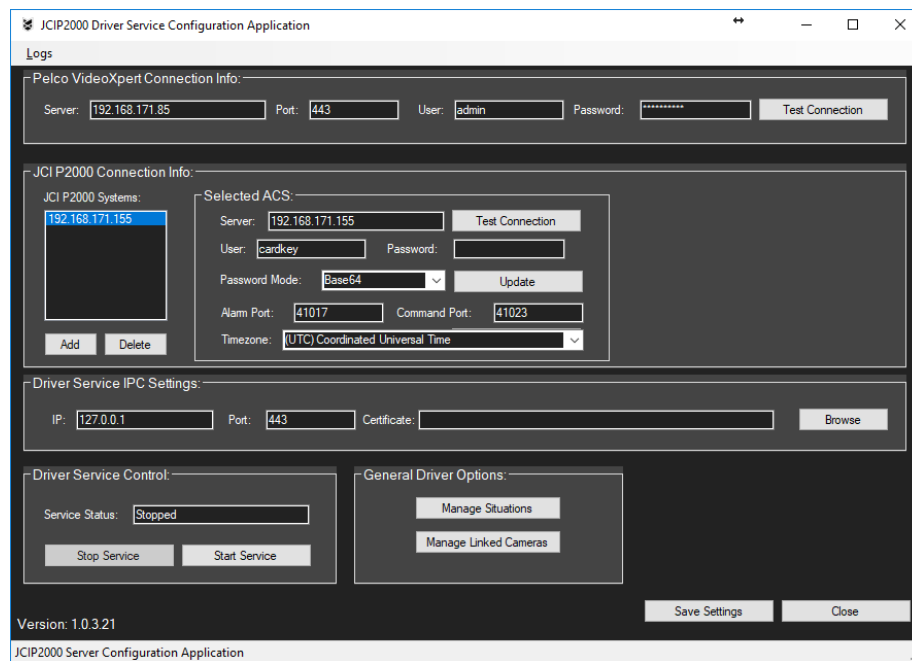


Figure 9: Driver Configuration Application

7.3.1. Pelco VideoXpert Connection

Enter the following fields in the **Pelco VideoXpert Connection Info** section:

- **Server:** Enter the hostname or IP address of the VideoXpert server
- **Port:** Enter the port VideoXpert VX System is configured with.
- **User:** Enter the username for a VideoXpert user with access to the system.
- **Password:** Enter the password for a VideoXpert user with access to the system
- To test the connection information is correct click on the **Test Connection** button. If all the fields are correct a **Successful connection** message will appear:

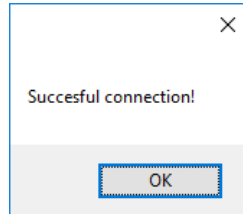


Figure 10: VideoXpert connection test success

If connection fails check the configuration tool logs from the application **Logs** menu and check all fields are entered correctly.

- Click on **Save Settings**.

7.3.2. JCI P2000 Connection

Enter the following fields in the **JCI P2000 Connection Info** section:

- **Server:** Enter the hostname or IP address of the P2000 server
- **User:** Enter the username with access to the P2000 system.
- **Password:** Enter the password for the P2000 user.
- **Password Mode:** Select the password mode for the P2000 XmlRpc interface. Note: this value is saved in the P2000 system configuration under Site Parameters→XmlRpc (If ignore is set on server the password can be left blank here as it will be ignored)

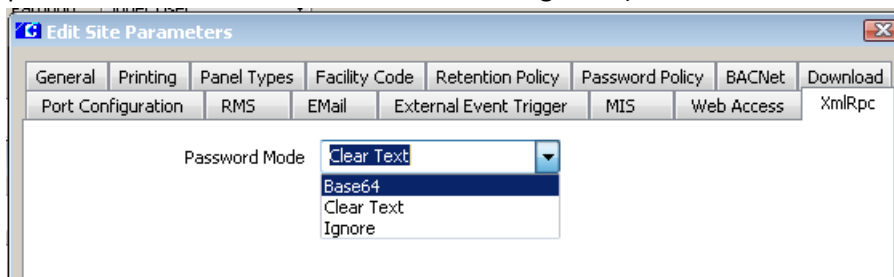


Figure 11: P2000 Password Mode

- **Alarm Port:** Enter the port to use for the alarm port, this is the port created on the driver PC to listen for incoming events from P2000. Firewall settings may need to be configured to allow incoming traffic on this port from the P2000 server. Note: this value is configured in the P2000 system configuration under Remote Server→<Server name>→Port

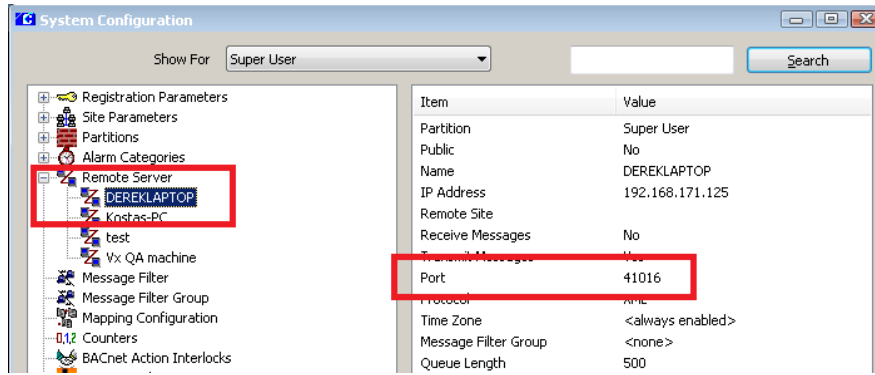


Figure 12: P2000 Event Port

- **Command Port:** Enter the P2000 XmlRpc Interface port, this setting is configured in the P2000 system configuration under Site Parameters→Port Configuration→P2000 XmlRpc Interface Port

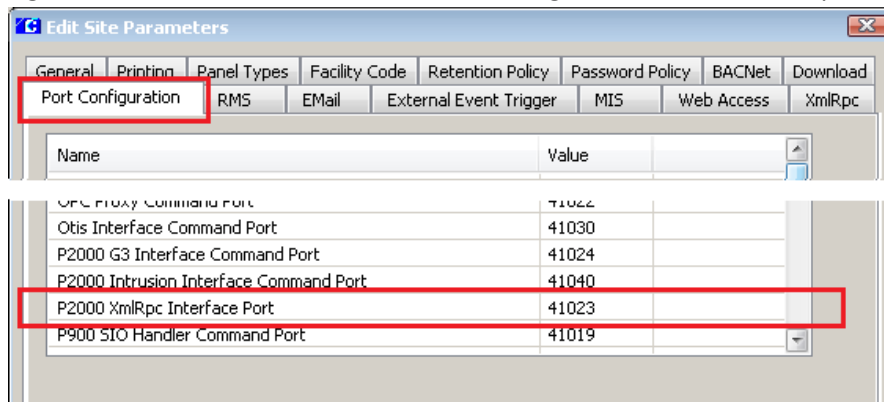


Figure 13: P2000 Command Port

- **Timezone:** Select the time zone the P2000 server is running in. This value is required to convert P2000 events timestamp correctly.
- To test the connection information is correct click on the **Test Connection** button. If all the fields are correct a **Successful connection** message will appear:

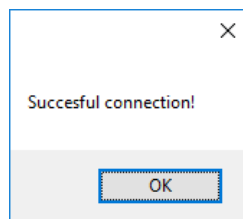


Figure 14: P2000 connection test success

If connection fails check the configuration tool logs from the application **Logs** menu and check all fields are entered correctly.

- Click on **Add** to add the new configuration to the list of P2000 systems.
- To edit a field:
 - Select the system in **JCI P2000 Systems** list

- Edit the fields
- Click on **Update** to update the entry to the list. (Note you must click on update before clicking Save Settings)
- Click on **Save Settings**.

7.3.3. Driver Service IPC Settings

Enter the following fields in the **Driver Service IPC Settings** section:

- **IP:** Enter the IP address of the PC where this driver is installed. (If multiple network interfaces use the one which will be used to connect to from the VideoXpert Access Control Viewer.
- **Port:** Enter the port the IPC server will be listening on.

Note: The IP and port settings above will be used in the VideoXpert clients when connecting to this driver interface using the Access Control System Viewer. See **IP Address** and **Port** fields below:

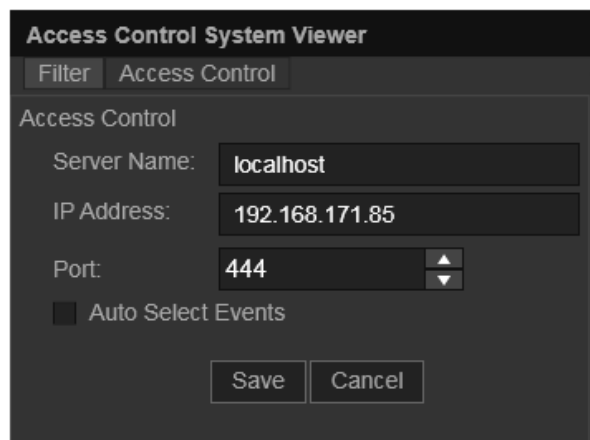


Figure 15: Access Control System Viewer IPC Settings

- **Certificate:** If SSL communication is required between IPC client/server enter the path to the SSL cert personnel exchange format file (.pfx file).

7.3.4. Manage Situations

- Click on the **Manage Situation** button under **General Driver Options** to configure the JCI P2000 situations list that will be imported into Pelco.
- The manage situations window will open as follows:

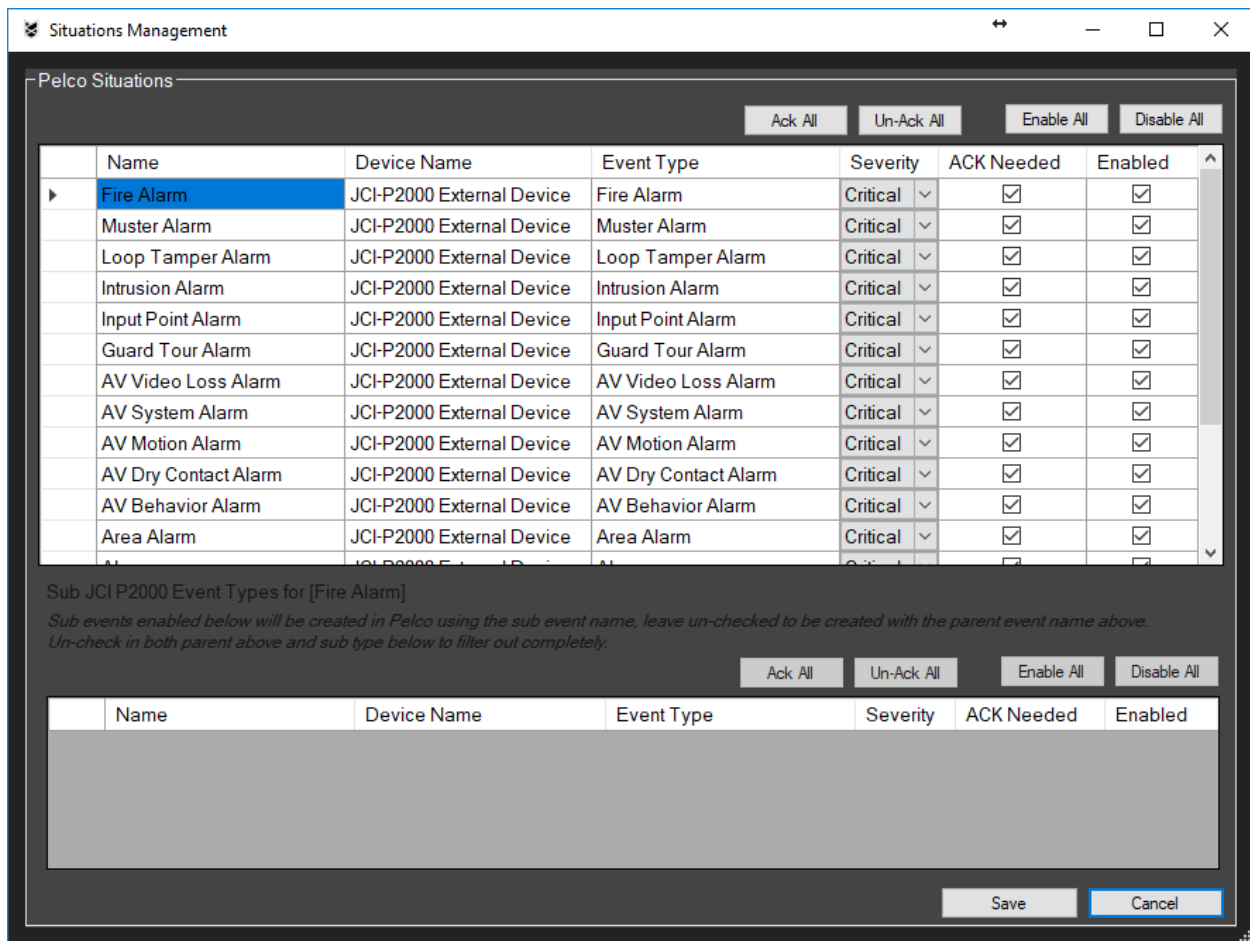
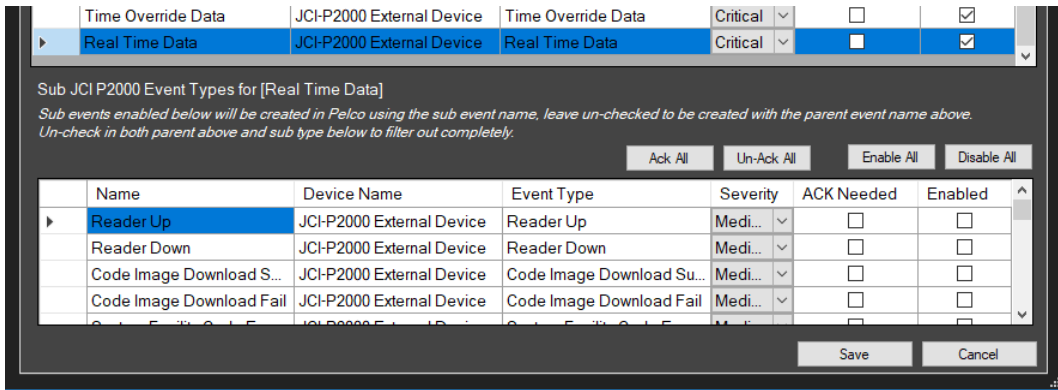


Figure 16: Situations management

- The configurable fields are:
 - Name – This must be edited before starting service for the first time as Situations are imported into VideoXpert they can only be edited via VxToolbox
 - Severity – This must be edited before starting service for the first time as Situations are imported into VideoXpert they can only be edited via VxToolbox
 - ACK Needed
 - Enabled – disabling will filter the event type at the driver and events will not be injected into VideoXpert.
- Some Event types also have Sub Event types. By clicking the event type if there are sub event types available then the lower table will populate with the sub event types.



Events are created as follows in VideoXpert:

- If the sub event type is enabled that sub event type will appear in VideoXpert
- Otherwise if the parent event type is enabled then that sub event will appear in VideoXpert with the parent event type name
- Other if neither sub event type or parent event type are enabled that event will be filtered out and not be sent to VideoXpert.
- When complete click **Save**.

7.3.5. Manage Linked Cameras

This allows cameras to be associated with events in VideoXpert based on the P2000 terminal (access control point) where the P2000 event occurred.

- Click on the **Manage Linked Cameras** button under **General Driver Options** to configure cameras for P2000 access control points.
- The **Pelco Camera / P2000 Access Control Point Management** window opens

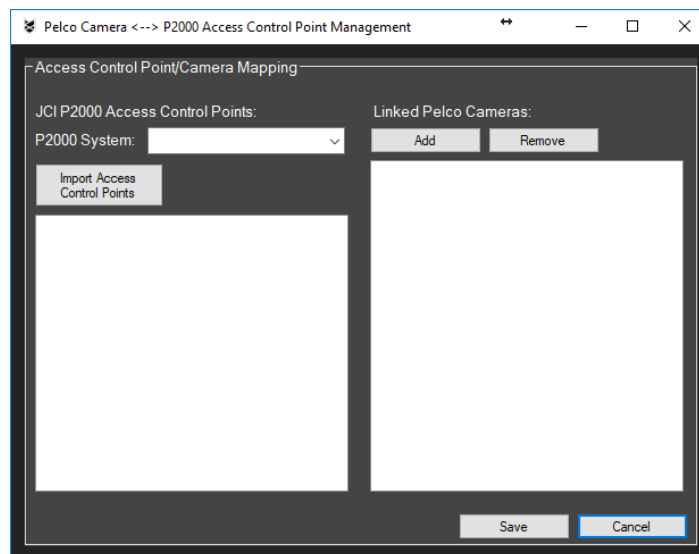


Figure 17: Pelco camera / P2000 Access Control Point association

- Select the P2000 system (Note: if this list is empty exit this window and click on **Save Settings** first)

- Click on **Import Access Control Points**. This will attempt to connect to the P2000 system configured in the previous sections and import the list of P2000 access control points into the list.
- Select a Access Control Point in the list

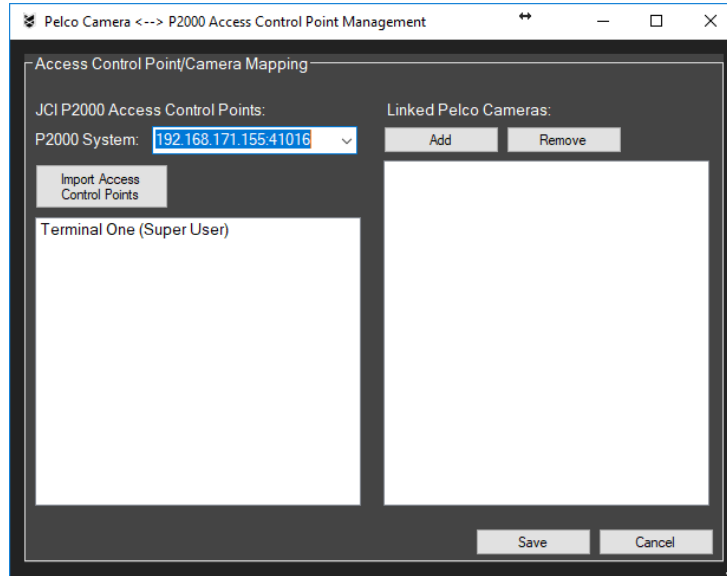


Figure 18: P2000 Access Control Point selection

- To associate a camera (or cameras) with the terminal click **Add**.
- A connection is made to VideoXpert and imports a list of video sources.

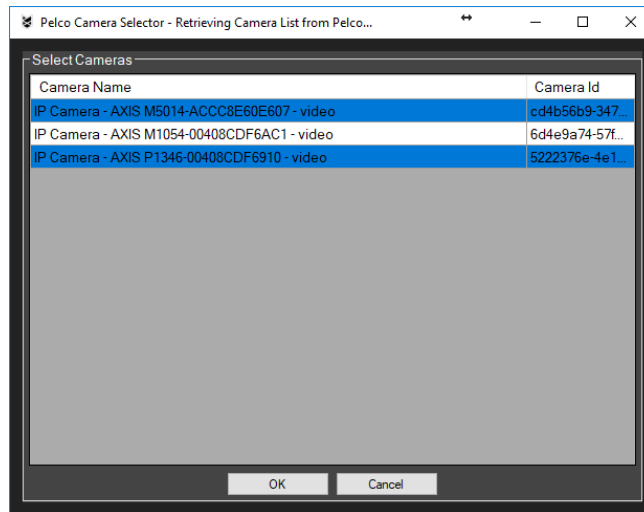
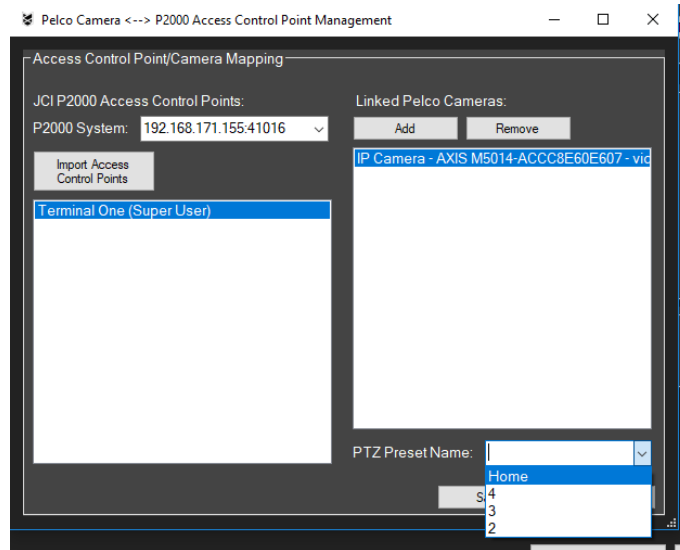


Figure 19: Pelco camera selection

- Select one or more of the video sources and click on **OK**.
- The cameras will be associated with the selected P2000 Access Control Point.



- To configure a PTZ for this linked camera Enter the PTZ Preset name in the **PTZ Preset Name** field.
Note: After adding the camera the selecting list attempts to retrieve the list of PTZ presets from Pelco and populates the list. However, the auto-population doesn't occur the PTZ preset name can still be entered manually.
- When an event occurs is received in Pelco associated with this Access Control Point with this linked camera, a command will be sent to go to this PTZ preset if this field is configured.
- To disassociate a video source from a Terminal select the video source and click **Remove**.
- When mapping configuration is complete click **Save** to save and exit.
- Click on **Save Settings** to commit the changes.

7.3.6. Driver Service Control

The VideoXpert – JCI P2000 Driver can be started/stopped from within the **Driver Service Control** section.

Important Notes:

- If any settings are changed the driver service must be restarted for the driver service to load the new settings.
- This configuration application can be found in the start menu under **Pelco → VideoXpert JCI-P2000 → JCI-P2000 Driver Configuration** and can be run from there to change settings after installation.

Click **Close** when all configuration is complete to close the configuration application and continue the install process.

7.4. Step 4 – Install Complete

Click **Finish** button to finish the installation.

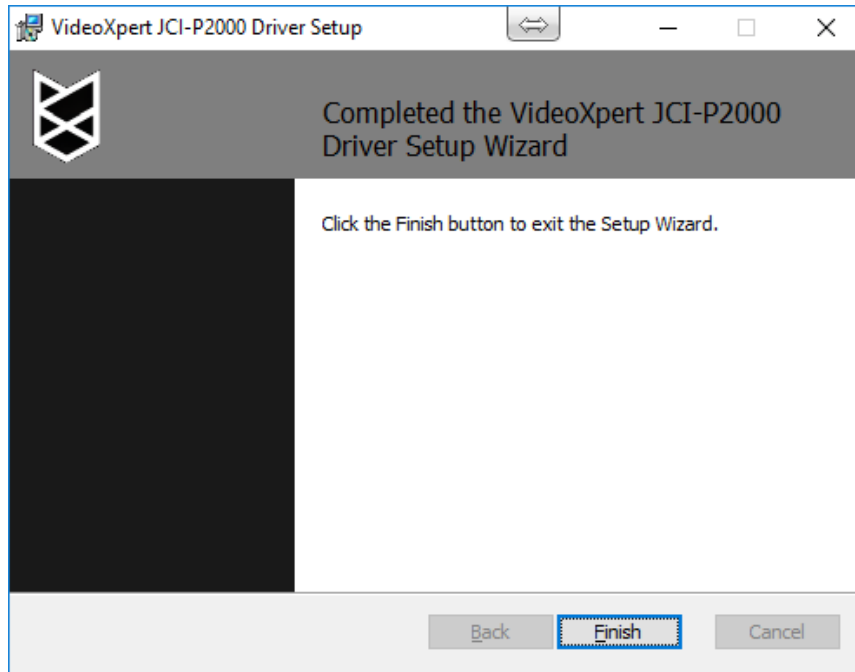


Figure 20: Install complete

8. System Configurations

The configuration application as described in the previous section can be found in the start menu under **Pelco → VideoXpert JCI-P2000 → JCI-P2000 Driver Configuration** and can be run from there to change settings after installation.

9. Uninstallation Steps

9.1. Step 1 – Start the Uninstallation

In order to uninstall open windows Programs and Features and click on **Uninstall** for the **VideoXpert JCI-Pelco P2000 Driver** entry.

Name	Publisher	Installed On	Size	Version
VideoXpert JCI-P2000 Driver	Schneider Electric	31/10/2017	185 MB	1.0.3.21
Intel® Graphics Driver	Intel Corporation	31/10/2017	4.12 MB	22.20.16.4735
Intel(R) Dynamic Platform and	Intel Corporation	31/10/2017	29.2 MB	8.2.11000.2996
Intel® PROSet/Wireless Softw	Intel Corporation	31/10/2017	246 MB	19.60.0
Victor Unified Client	Victor Security Products	31/10/2017	603 MB	15.0.455.190

Figure 21: Programs and Features entry

The following window will be shown. Click the **Next** button to start uninstallation.

9.2. Step 2 – Uninstall Complete

The driver will be removed from the system.

10. User Guide

Refer *VideoXpert Integration – JCI P2000 [User Guide].docx*

11. References

#	Documents/Inputs	Description
1	Discussions	Technical and requirement analysis discussions between all internal and external stakeholders.
2	VideoXpert SDK	Documentation of VideoXpert SDK

12. Support

If the instructions provided fail to solve your problem, contact Pelco Product Support at 1-800-289-9100 (USA and Canada) or +1-559-292-1981 (international) for assistance.

13. Copyright Notice

© Copyright 2017, Pelco, Inc. All rights reserved.



Pelco, Inc.
625 W. Alluvial Way
Fresno, CA 93711
USA & Canada Tel (800) 289-9100
Fax (800) 289-9150
International Tel +1(559)292-1931
Fax +1(559)348-1120
www.pelco.com