

VideoXpert 3.X – Salto Integration

Installation and User Guide

Contents

- 1. Introduction 3
- 2. Abbreviations 3
- 3. Version Information 3
 - 3.1. Integration to VideoXpert Component Version 3
 - 3.2. Salto Version 3
- 4. System Overview 3
- 5. Installation 3
 - 5.1. Prerequisites 3
 - 5.2. Installation Steps 4
 - 5.2.1. Step 1 – Start installation 4
 - 5.2.2. Middleware Setup 6
 - 5.2.3. VideoXpert License 9
- 6. System Operations 10
 - 6.1. VideoXpert Toolbox 10
 - 6.2. VideoXpert OpsCenter 10
 - 6.3. Using Generic Access Control Plugin 12
 - 6.4. Notes 12
- 7. Troubleshooting Steps 12
- 8. Support 12

1. Introduction

This document is the installation and user guide for the VideoXpert Integration with Salto Access Control. The objective of this document is to provide information about the system usage, functions, configurations and known issues.

2. Abbreviations

#	Abbreviation	Definition
1	VMS	Video Management System
2	VX	VideoXpert
3	VxSDK	VideoXpert Software Development Kit
4	PTZ	Pan Tilt Zoom

Table 1: Abbreviations

3. Version Information

3.1. Integration to VideoXpert Component Version

#	Component Name	Version	Description
1	SaltoMiddleware-3.X.X.msi	3.0	Salto integration driver

Table 2: Integration Component Version

3.2. Salto Version

#	Component Name	Version	Remarks
1	Salto Product	5.1.3.2	
2	Salto Package	5.1.3.44	
3	Salto Service	4.10.3.367	

Table 3: Salto Version

4. System Overview

The VideoXpert to Salto Integration enables the interaction between Salto and VideoXpert systems. This VideoXpert integration creates events from the Salto system that can then be used to create pop up banners, PTZ events, etc. (see VideoXpert documentation for functionality based on events).

5. Installation

5.1. Prerequisites

Following are the prerequisites which need to be installed before installing the Salto Integration.

1. Salto Product 5.1.3.2 or higher

Salto software should be installed and licensed for the proper functioning of the integration.

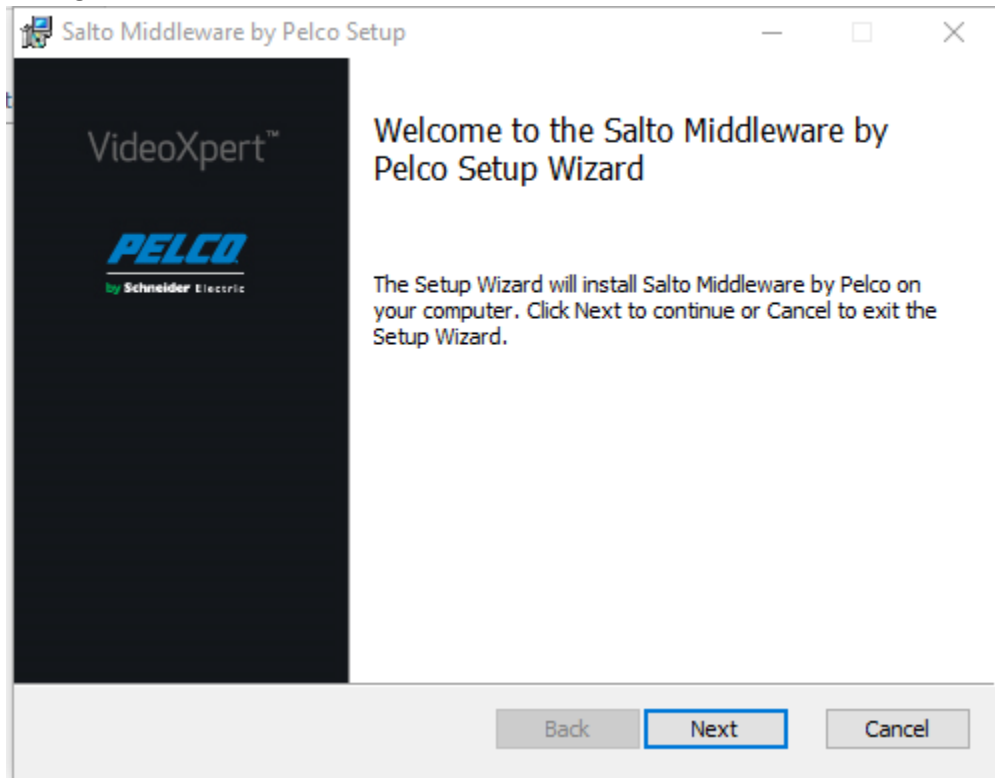
Security Expert SOAP Service configuration

5.2. Installation Steps

5.2.1. Step 1 – Start installation

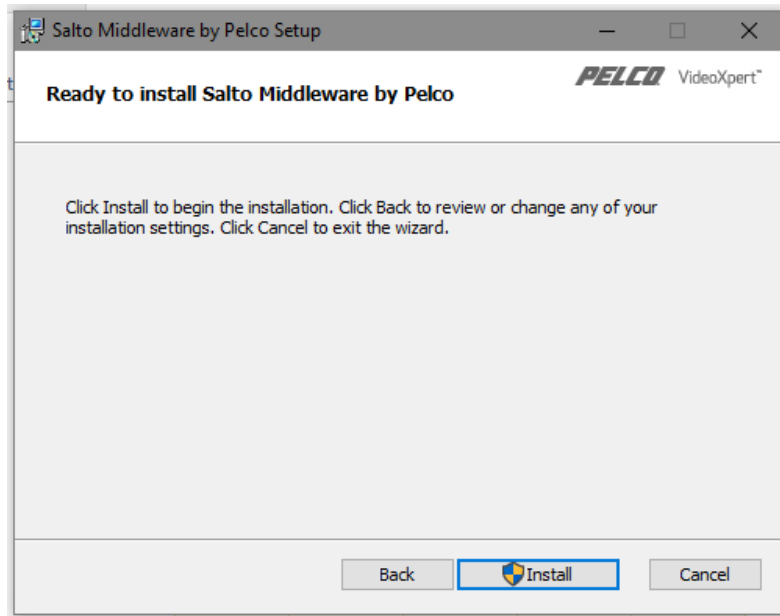
If you get the file from partnerfirst.pelco.com, you will need to unzip the file.

Double click SaltoMiddleware-3.X.X.msi file to start the installation. Installation wizard starts with the following window.



Installation home screen

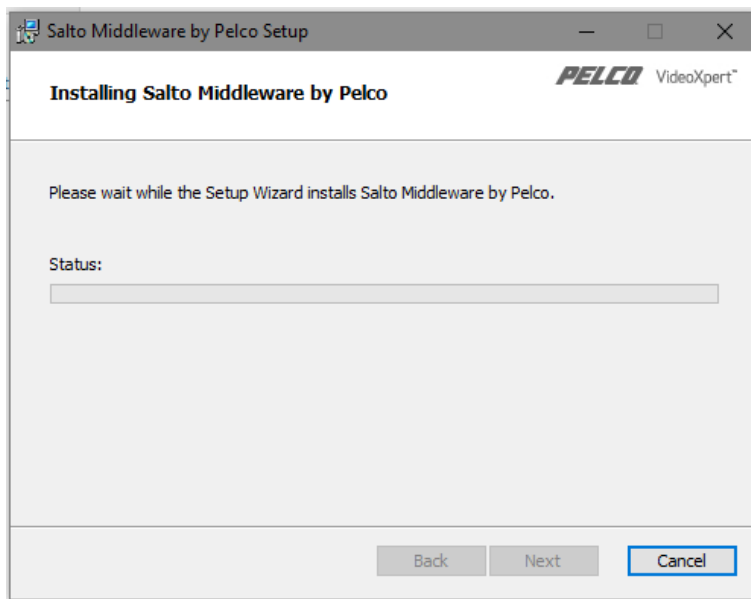
Click "Next" to continue the installation.



Install Screen

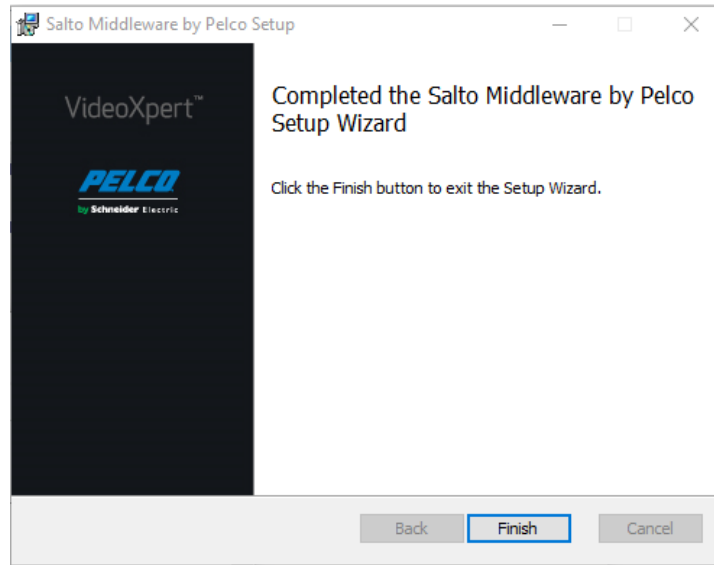
Click “Install” to begin the installation.

You will then see this progress screen:

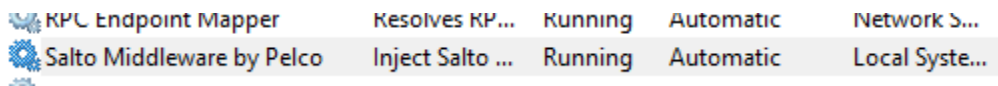


The Windows operating system may ask if you want to install this product. Answer affirmative to those queries to begin the installation.

After installation, you will see the following success message

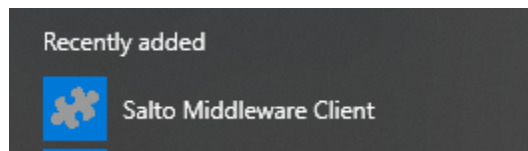


This process created a new service that will communicate to the Salto system and the VideoXpert system. The new service is named “Salto Middleware by Pelco”.

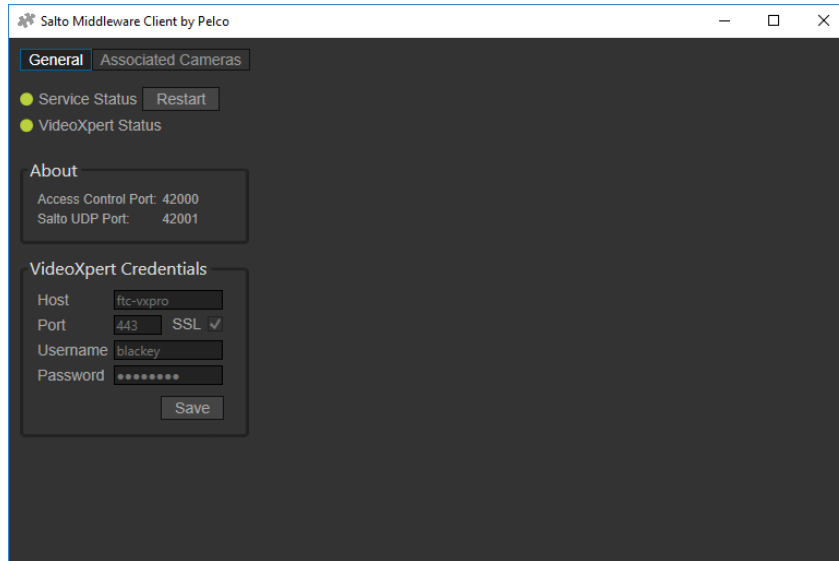


5.2.2. Middleware Setup

You now need to setup the integration to bridge Salto and VideoXpert. You will see a new program named “Salto Middleware Client”

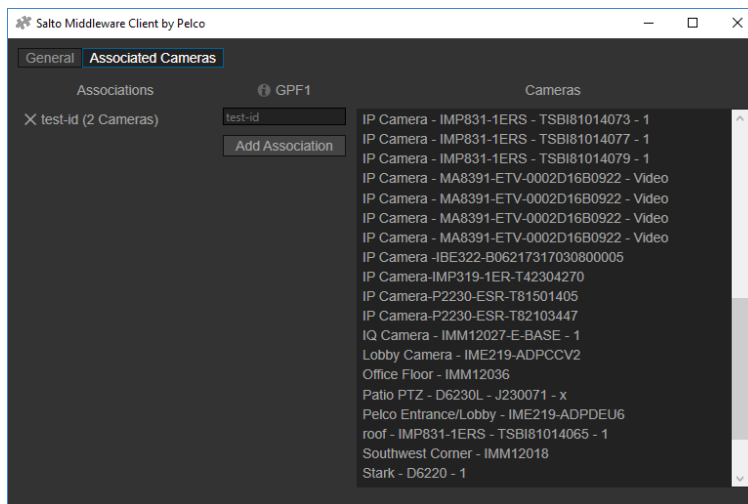


Start this client. On the general tab, add your VideoXpert credentials. The VideoXpert user must have administrator role for all middleware functions to work correctly.

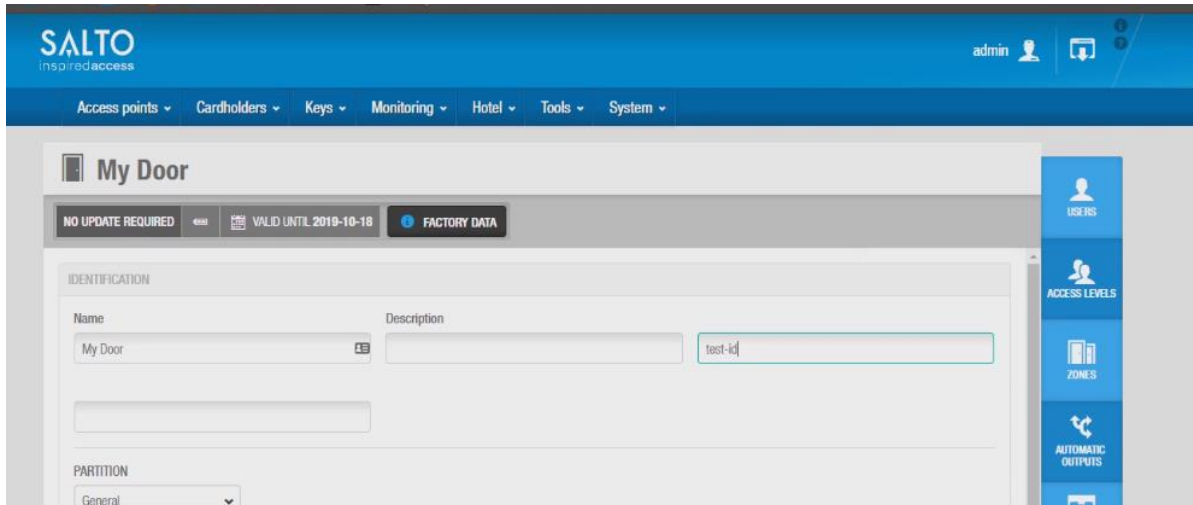


Note the green dot to the left of the VideoXpert status. If your VideoXpert information is correct, the dot will be green. Otherwise it will be red. The middleware will not work if the connection to VideoXpert is not green.

The “Associated Cameras” tab can be used to associate certain events from Salto to a data source in VideoXpert. You should only perform this step after you have the correct VideoXpert information.

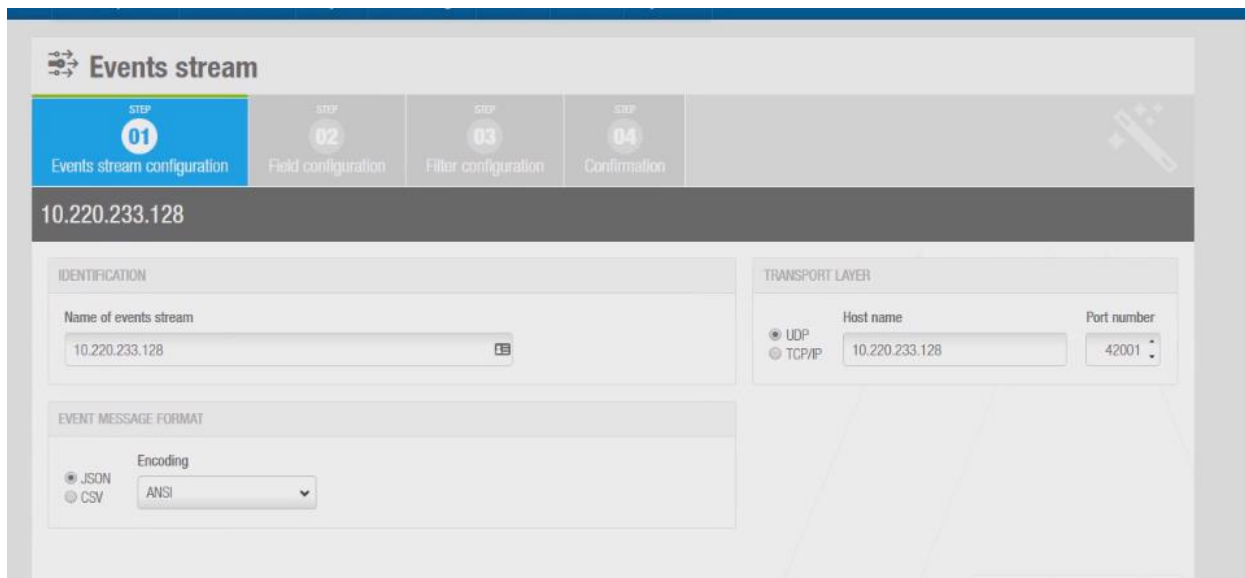


The general door purpose field is setup in the Salto UI. As an example, this door is set up to a name of ‘test-id’



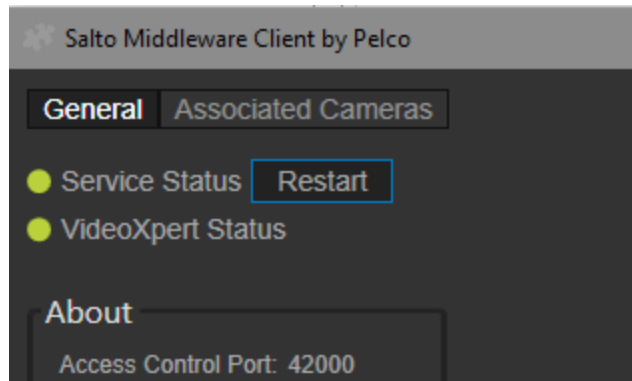
Please note that you can add more than one camera to an association.

After you have associated your cameras with items in the Salto software, you need to configure the 'event stream' in the Salto software to allow communication to the middleware.

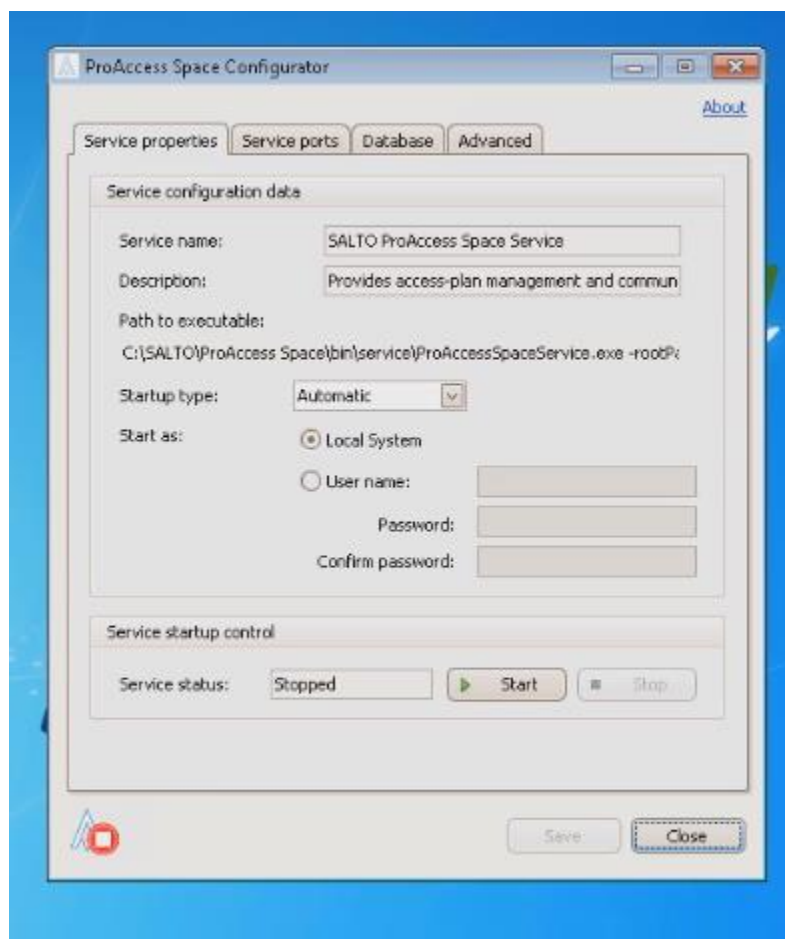


The "Name of events stream" is the IP address of the machine running the middleware. You also need to add this IP address to the 'transport layer', and set the port to 42001 (which matches the "Salto UDP Port" in the general tab of the setup program). The message format should be "JSON" and ANSI.

After this setup, you will need to restart the middleware service which can be done in the middleware setup in the general tab.



You will also need to restart the Salto services which can be done on your Salto server box using the Salto ProAccess Space Configurator.



5.2.3. VideoXpert License

This software will require a license to work with VideoXpert. There is a 90 day grace period when you first install this middle ware. After 90 days, you must have a license or this software will cease to work.

6. System Operations

At this point, your integration should be working.

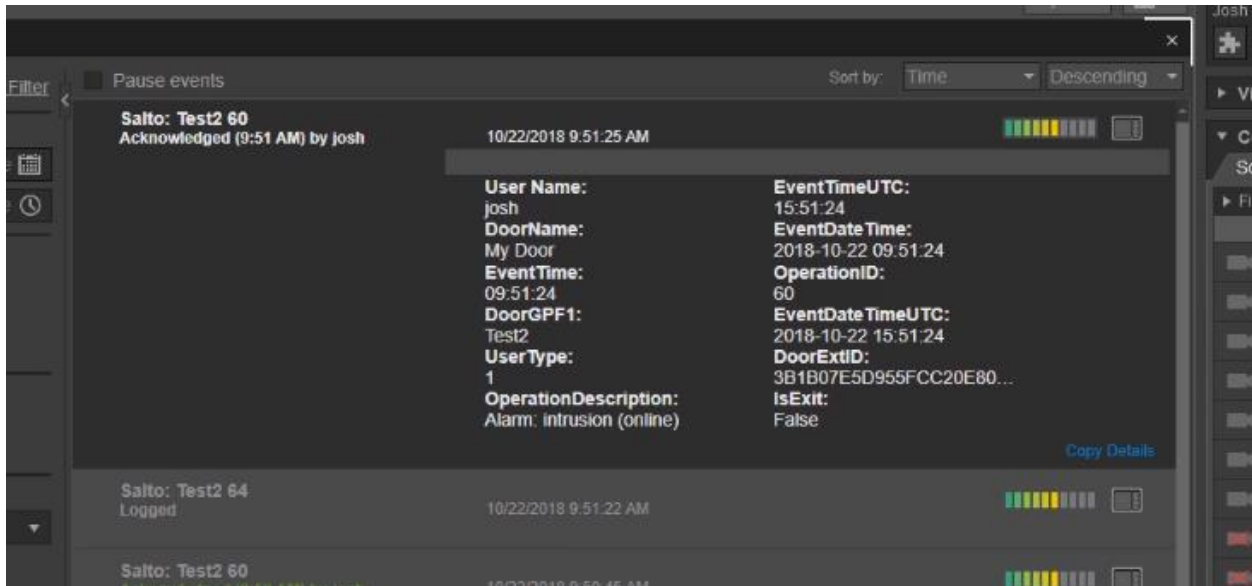
6.1. VideoXpert Toolbox

You will notice that there are new external situations in VideoXpert Toolbox that reference Salto. You may go into Toolbox to change the severity and notification for these events.

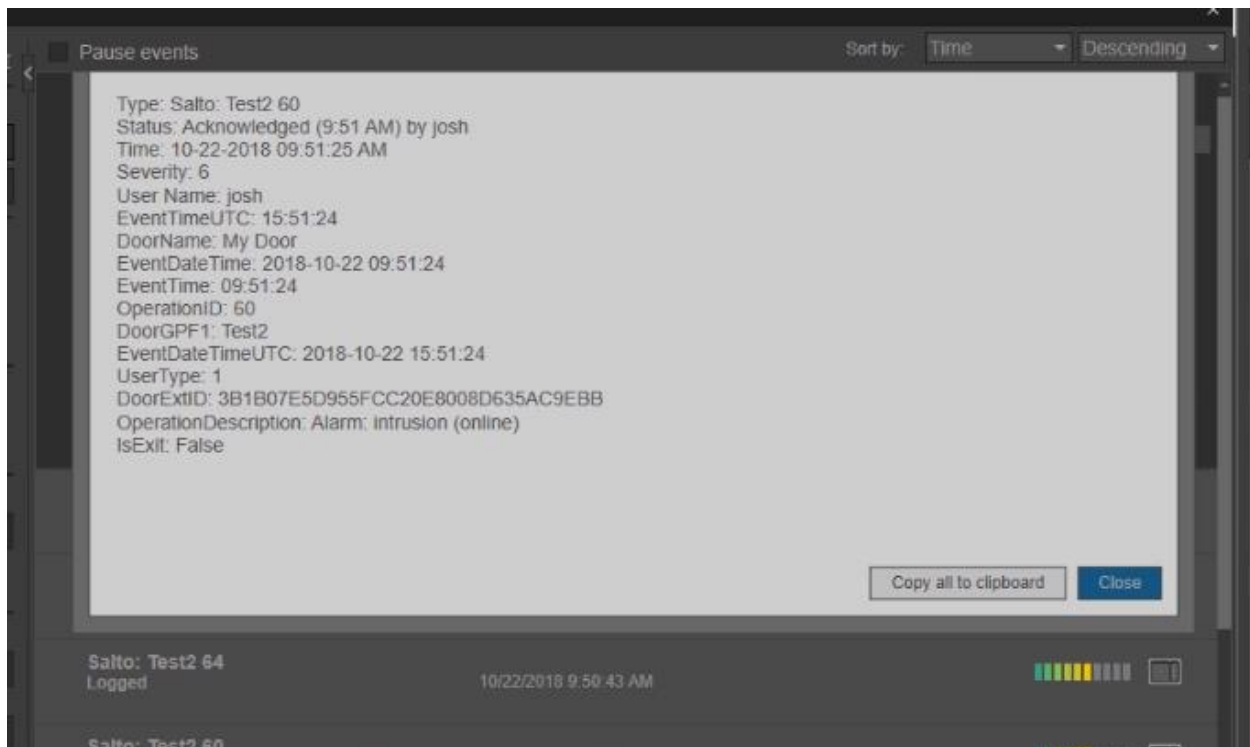


6.2. VideoXpert OpsCenter

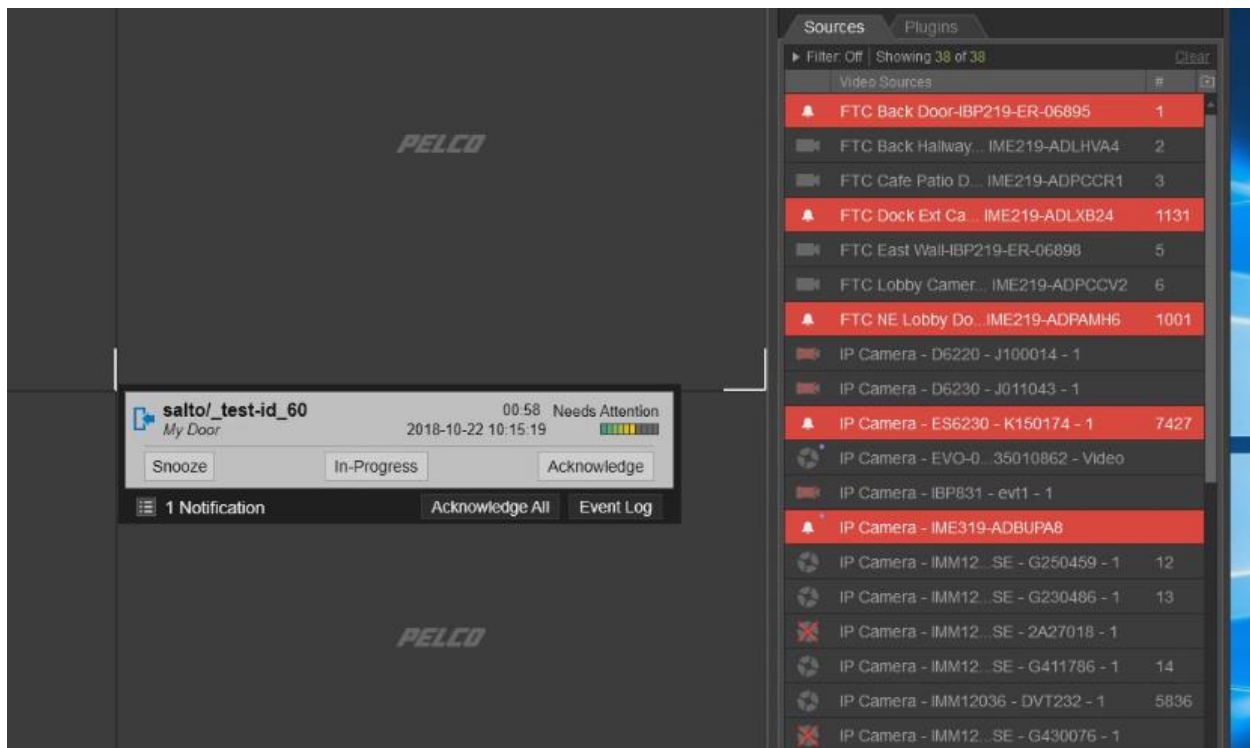
In OpsCenter, you may use the Event Viewer to see Salto Events.



You may click on “Copy Details” to get more information about this event.



In OpsCenter, if you set up Salto events for banner pop ups, you will see banners for Salto events, and the cameras assigned to the event in an alarm state.



What you will notice in OpsCenter is dependent on how you have set up events and alarms in VideoXpert. Please see the VideoXpert documentation for more information.

6.3. Using Generic Access Control Plugin

This integration will work with the Pelco Generic access plugin. However, access control points, and pictures of users is not supported.

6.4. Notes

Please note, this integration does not work with access control points with VxMaps.

7. Troubleshooting Steps

Log files for the middle ware are located at:

C:\ProgramData\Pelco\Logs\Salto

To enable verbose logging, you will need to modify the following files and ensure that 'Debug' is set for the 'minlevel' attribute of all 'logger' elements:

C:\Program Files\Pelco\Integrations\Salto\Client\NLog.config

C:\Program Files\Pelco\Integrations\Salto\Client\NLog.config

8. Support

If the instructions provided fail to solve your problem, contact Pelco Product Support at 1-800-289-9100 (USA and Canada) or +1-559-292-1981 (international) for assistance.



Pelco, Inc.

625 W. Alluvial, Fresno, California 93711 USA
(800) 289-9100 Tel (800) 289-9150 Fax
+1 (559) 292-1981 International Tel
+1 (559) 348-1120 International Fax
www.pelco.com

Pelco, the Pelco logo, and other trademarks associated with Pelco products referred to in this publication are trademarks of Pelco, Inc. or its affiliates. ONVIF and the ONVIF logo are trademarks of ONVIF Inc. All other product names and services are the property of their respective companies. Product specifications and availability are subject to change without notice.

© Copyright 2018, Pelco, Inc. All rights reserved