



Digital Sentry



VxPro

VxPro Installation in DSSRV2 Server Guide
Version 1.2

Table of Contents

Introduction	3
Environment Details	3
Requirements	3
What is supported	3
What is not supported	3
Software Migration Process	4
Migration Notes	4
Step 1: DSSRV2 preparation steps	4
Step 2: VxPro software Installation and Migration Steps	5
Step 3: configure VxOpscenter	8
Step 4: Shutdown the DigitalSENTRY services	10
Step 5: ENC5516 Encoder Configuration using the Encoder Frame Service	12
How to Upgrade a DSSRV(1) to VxPro	14
Repurposing DS-CPPC as an Ops Center Workstation	14
DS Migration Plan	14



Introduction

Main objective of this document is to provide a migration guide for installing VxPro software on DSSRV2 hardware.

Environment Details

- DSSRV2 Box
 - Processor - Intel® Xeon® @3.5GHz
 - Internal RAM - 8GB / 16 GB
 - System Type - 64-bit OS
- Digital Sentry v7.19
- VxPro Installer v3.3 (or greater)
- Pelco IP Cameras / ENC5516 Direct Attached Encoders

Requirements

- Available (3GB's minimum) free space on the C:\ drive.
- VxPro v3.3 or greater software downloaded from Pelco.com/vxpro
- Available storage drives for video recording (D:\ and others if JBOD)
- At least one 1Gbps network connection

What Is Supported

- **ENC5516 direct attached encoders** (analog encoder).
 - NOTE: Requires additional software to be installed after the migration. ENC5xxx encoders are supported when migrating DSSRV2 hardware to VideoXpert Pro software only.
- **Importing previously recorded video.** The VxPro 3.3.0 or greater installer can now migrate existing Digital Sentry recorded video into the VideoXpert database. This means previously recorded video will be playable in VxOpsCenter after the migration.

What Is NOT Supported

- **Digital Sentry IP camera licenses do not transfer**, will need to purchase VideoXpert Pro licenses. VxPro includes a 60-day evaluation license as well as a 4 channel 1-year demo license which can be extended one time.
- **DSSRV1 hardware**
- **ENC5416 direct attached encoders** (analog encoder).
- **Importing a DS Backup database from Digital Sentry** (camera schedules, users and roles accounts, storage rules)



Software Migration Process

Migration Notes

In order for the software migration to work properly, the Digital Sentry software *must be fully functional* with the DigitalSENTRY Video and Storage services running as normal. You should be able to open DS ControlPoint, connect to the system, view live and recorded video. *The VideoXpert bundle software installer is executed on the DSSRV2 with the DigitalSENTRY software functioning as normal and the services running.*

Transport Method, Maximum Retention Limit, Streams to Record, Users and Roles, Event Notifications are not migrated.

IP cameras along with their names and recorded video are migrated into VxPro software during the installation.

NOTE: It is not recommended to operate the VxOpsCenter client software as the primary viewing client on the DSSRV2 server. Due to limited resources with the DSSRV2 hardware, it is recommended to allocate a separate client PC for VxOpsCenter operation.

that time and resource drain became negligible. "With VideoXpert, you can tailor the investigation and bring all of the cameras into the timeline simultaneously," said David Lascano, owner of Angstrom Technology Group, the systems integration partner of FYIA.

Intelligent analytics can also help reduce the frequency of lost baggage as well as the time travelers spend waiting for their luggage at baggage claim. Video management systems can help to ensure that baggage delays are dealt with quickly and do not cause further security issues by integrating video verification with baggage handling systems (BHS). By combining the systems, a VMS can automatically validate BHS alarms for baggage jams, allowing staff to more quickly move through the process of clearing a jam or dealing with foul play.

Step 1: DSSRV2 Preperation Steps

1. Verify at least 3GB's of free disk space for the OS drive (C:\). Verify the C:\ drive shows a total size of at least 110GB's or greater. If not refer to the KB article: [How to Increase the C: Partition Size of the DSSRV2](#)
2. The DSSRV2 should be running current DS software. Download the latest DigitalSENTRY software release at pelco.com/ds. If the DSSRV2 is running an older software version, refer to the following KB article for upgrade instructions: [How to upgrade the Digital Sentry Software Suite on DSSRV / DSSRV2 / DS NVs HVR\(s\) and NVR\(s\)](#).
3. Insure the following DigitalSENTRY services are stopped and the 'Startup Type' set to Manual.
 - DigitalSENTRY DSNSMRest Service
 - DigitalSENTRY Serenity Service
 - DigitalSENTRY PelcoAPI Service
 - DigitalSENTRY FrameServer Service

Note: These are optional DS services and may not be present on the system.

4. Reset the 'admin' user account in DS Admin > User Administration back to the default password of admin

Note: The DS migration will assume admin for username and password. Will get a authentication prompt during the migration if not default.

5. If the system has been running nonstop for an extended period, recommend rebooting the DSSRV2 and verify proper operation after the reboot. DS ControlPoint should display Live and Playback video before moving on to the migration.



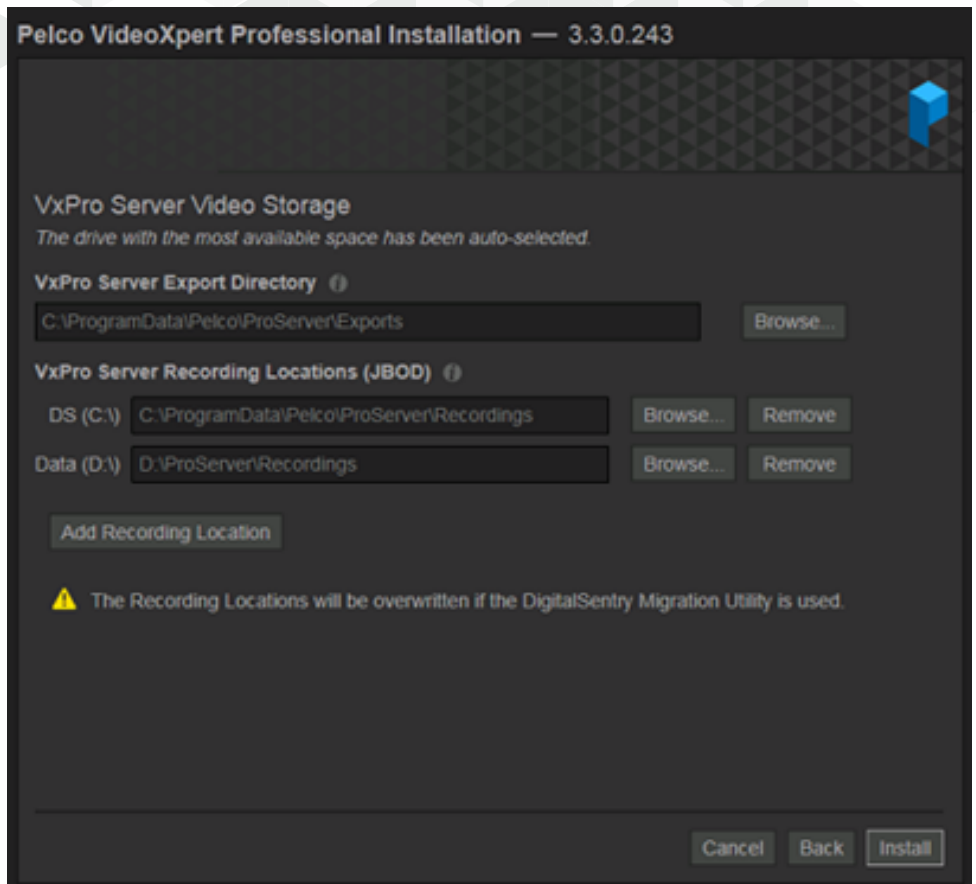
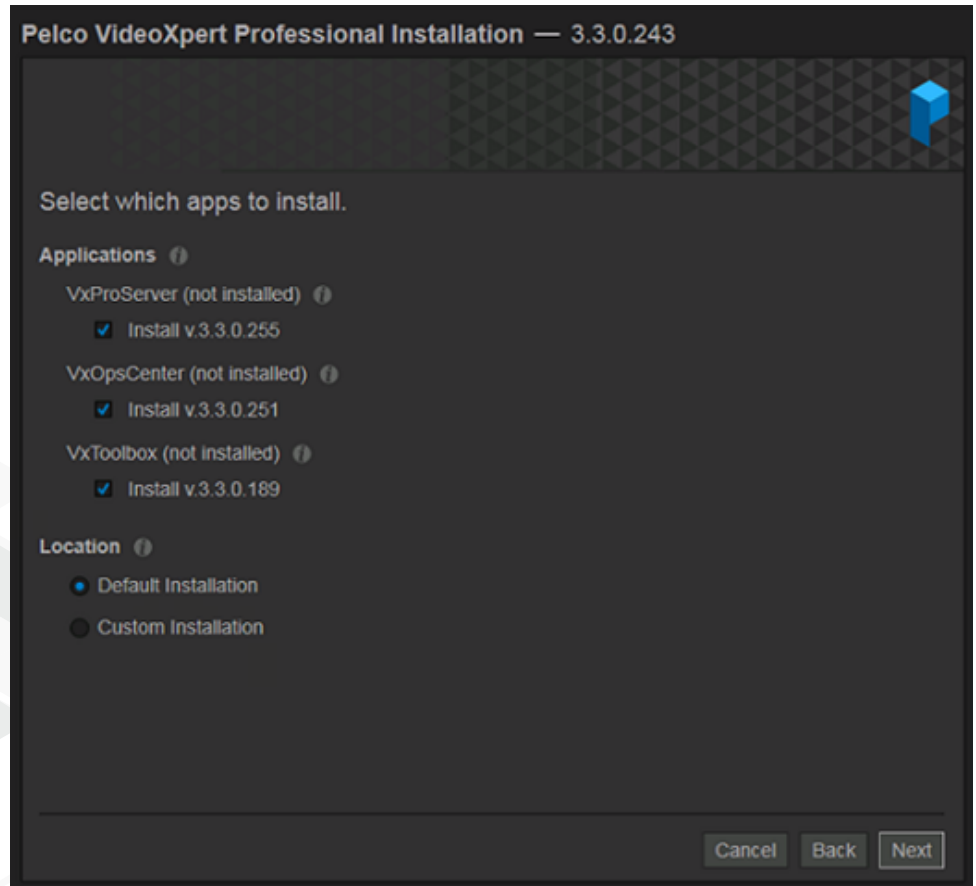
Step 2: VxPro Software Installation and Migration Steps

1. Download VideoXpert Professional Bundle Installer v3.3 or greater from pelco.com/vxpro

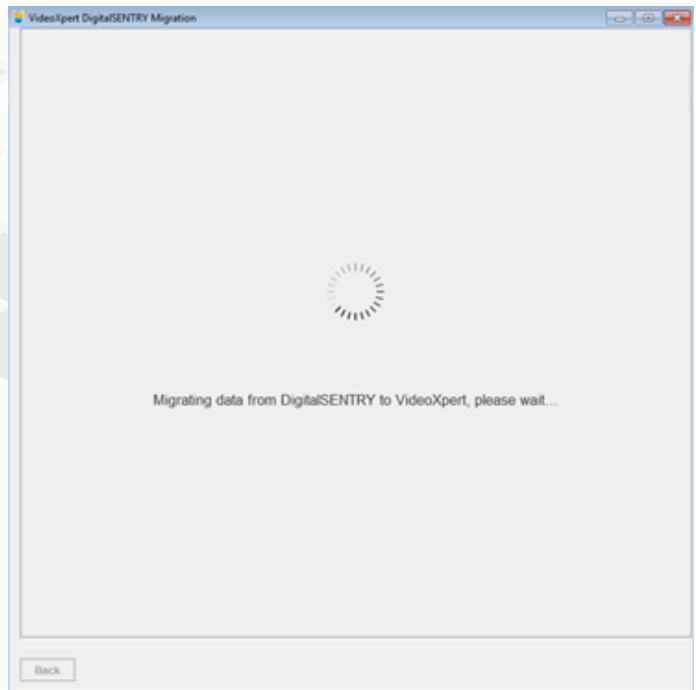
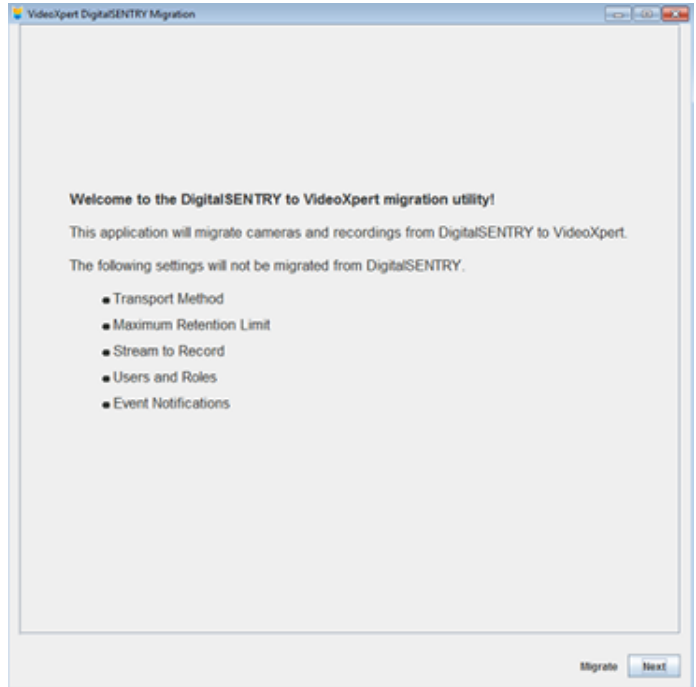
2. Double-click the VideoXpert Professional-xx.exe installer and **Begin Installation**.

3. Select all three Vx applications listed and the 'Location' as *Default Installation*. Click **Next**.

4. Recommend leaving the Export location and Recording location default, the listed Recording Locations will be overwritten anyway during the migration process. The activated DS storage locations will be automatically added as recording locations. Click **Install**.

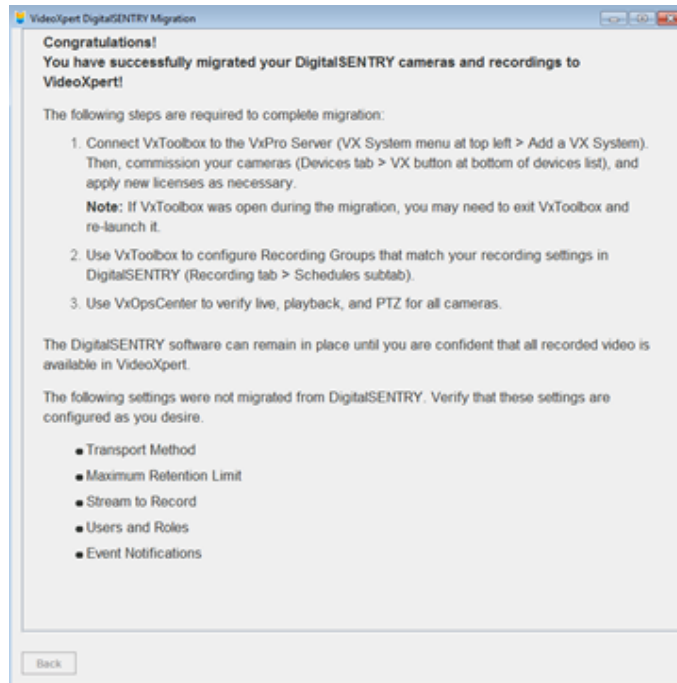


5. During the installation the **VideoXpert DigitalSENTRY Migration wizard** will launch. Read the information provided and when ready click **Next**.

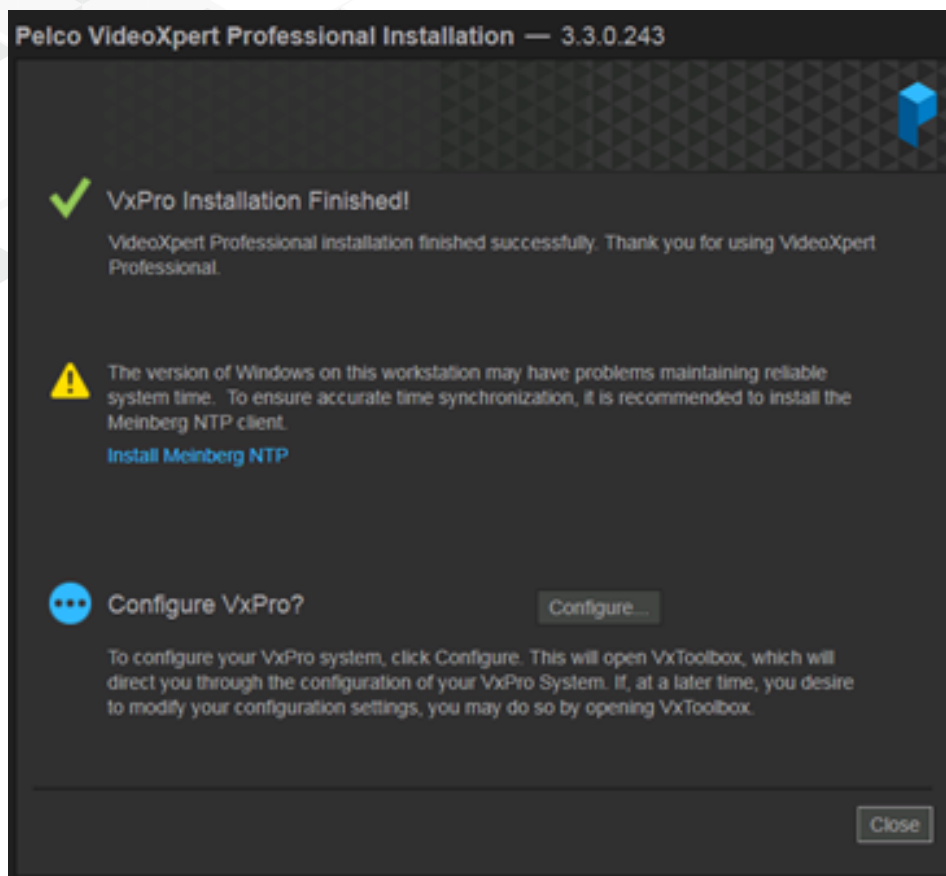


6. Once the migration has completed the wizard will display a **Congratulations!** Read the information listed and understand what needs to be done. When ready to continue click the **X** to close the Window.

7. The VxPro installation will now finish installing all components.

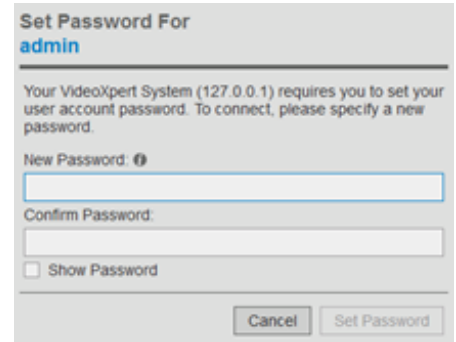


8. "VxPro Installation Finished!", Click "**Configure...**" to open VxToolbox and add the system connection.

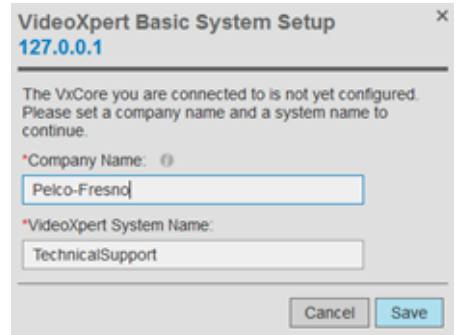


9. Click OK on the “VX system 127.0.0.1 has been added to VxToolbox” prompt.

10. Create a password for the VxPro ‘admin’ user account **Note:** Password must be a minimum of 8 characters



11. Add the **Company Name** and **VideoXpert System Name**. Click **Save**



12. VxToolbox will now launch, click on the **Devices** tab and verify the cameras have migrated and are listed. You may need to re-authenticate the cameras user credentials. Once authenticated, right-click the camera and select **Commission**.

Note: If the camera still shows “Unknown” for the model after commissioning. Wait at least a minute or two and if no change re-launch VxToolbox to refresh.

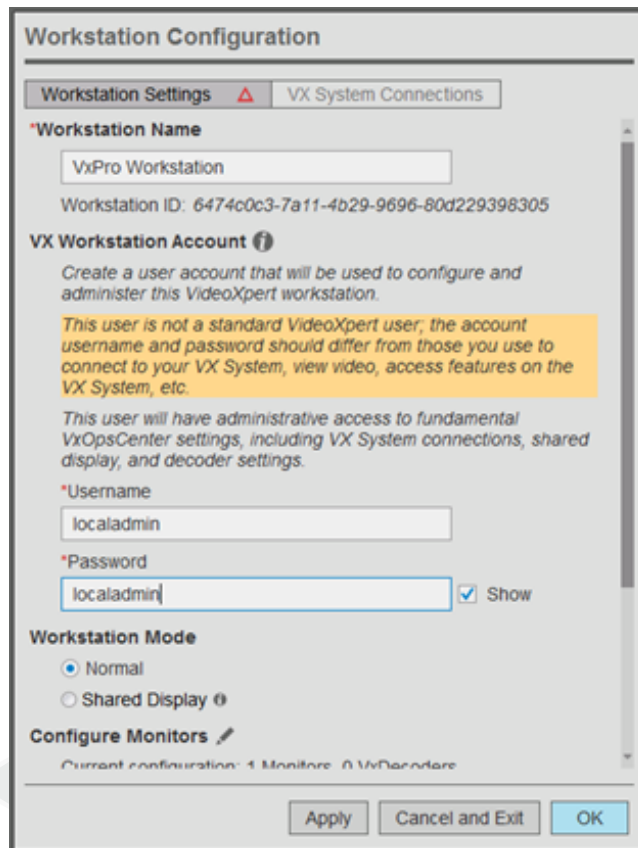
***ENC5516 Encoder:** If you are using analog encoders, the cameras will be listed but not functioning at this point. They will be listed as “**Unconfigured DigitalSENTRY Encoder**”. Getting the analog encoders to work with VideoXpert is the last step of the migration.

Step 3: Configure VxOpsCenter

1. Launch **VxOpsCenter**

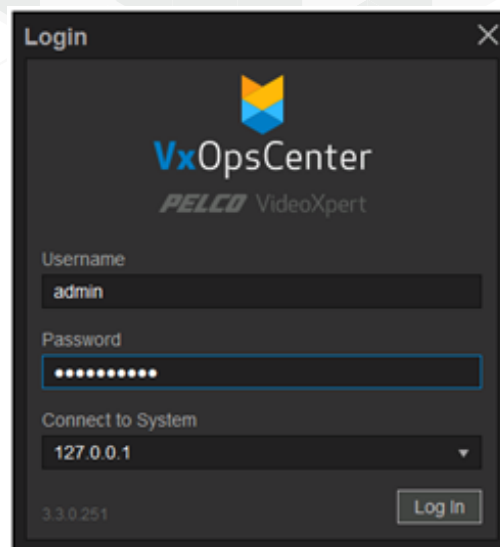


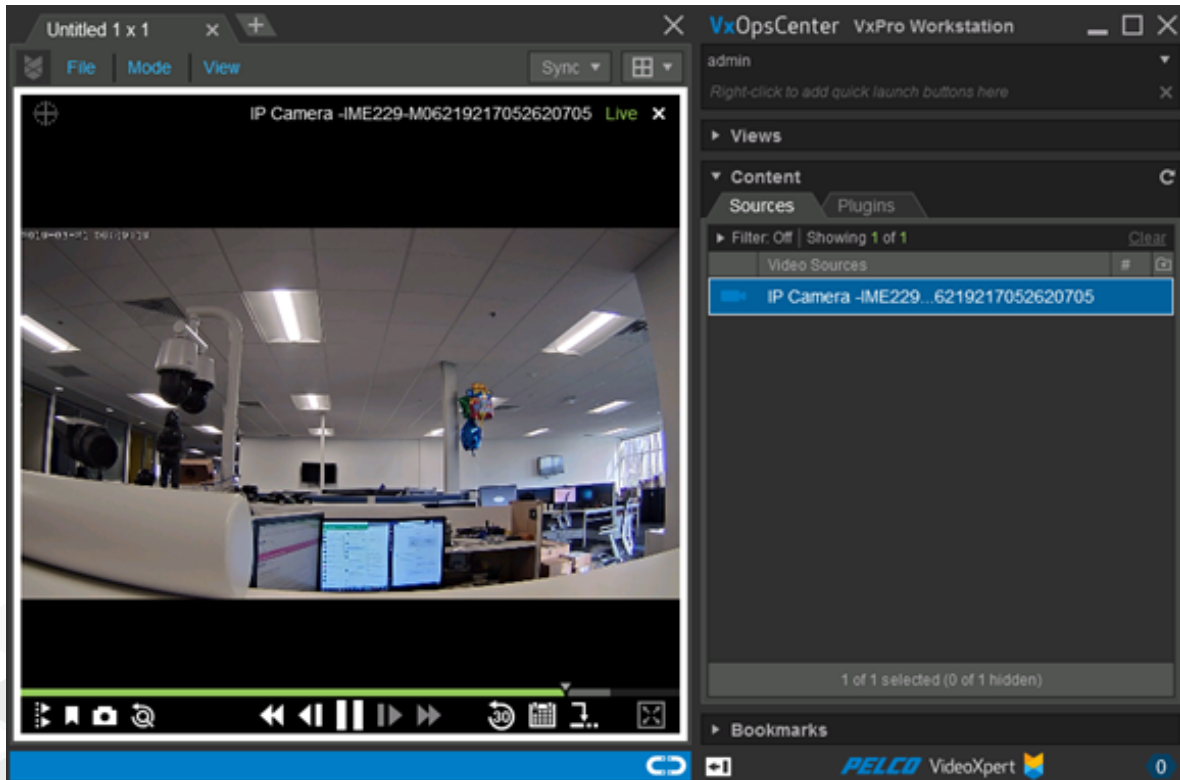
2. Enter a **local admin** account for OpsCenter (this is only an account for accessing VxOpsCenter's local configuration and not a VideoXpert system account.) .



3. After creating local configuration credentials, click **Apply** and then **OK**.

4. **Log In** using the VideoXpert 'admin' credentials (password created in STEP 10 of the VxPro software migration)





5. Verify *Live and *Playback video in VxOpsCenter

***IP Cameras only**, ENC5516 analog cameras have not been configured at this point so no live or playback in VxOpsCenter. These cameras are configured in a later step.

Step 4: Shutdown The Digital Sentry Services

Before shutting down the DS services, you may want to refer to DS Admin for settings which may need to be copied over into VideoXpert.

1. You can still launch and use DS Admin for settings which need to be copied over to VideoXpert.
 - a. Possible settings you may want to reference before uninstalling DS
 - Recording schedules: Cameras configured for Continuous or Motion recording.
 - PTZ information: if analog cameras are connected. PTZ protocol / address.
 - Storage Options: Were there any limits on retained storage.
 - Email Notification: Was email notification configured.
 - User Administration: What user accounts with assigned user rights need to be built within VxToolbox > Users.
 - Zones: Were there any alarms configured.



Step 5: ENC5516 Encoder Configuration Using The Encoder Frame Service

The *EncoderFrameService* is required for VxPro software to support an ENC5516 analog encoder.

EncoderFrameService Software prerequisites:

- [.NET Framework 4.7.1](#) (May need to install)
- Microsoft Visual C++ 2012 Redistributables (x86) (Should already be installed)
- [Microsoft Visual C++ 2015 Redistributables \(x86\)](#) (May need to install)
- ENC5516 drivers (Should already be installed)

1. If just finishing the migration or if the Digital Sentry services are still functioning, stop the following DS services and configure for a 'Manual' Startup Type. Some services listed below may not be installed as they are optional services.

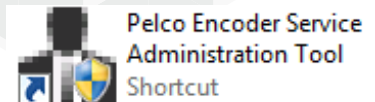
- a. DigitalSENTRY Watchdog Service
- b. DigitalSENTRY FrameService
- c. DigitalSENTRY PelcoAPI
- d. DigitalSENTRY Serenity
- e. DigitalSENTRY NSMRest
- f. DSWebService
- g. DigitalSENTRY VideoServer Service**
- h. DigitalSENTRY Storage Service**

2. Download the EncoderFrameService and extract on the DSSRV2 recorder.

[EncoderFrameService- 3.1.3.0](#)

3. Run the **Setup.msi** to install.

4. After the installation open the **Pelco Encoder Service Administration Tool** (Start menu > All Programs > Pelco > Pelco Encoder Service Administration Tool).

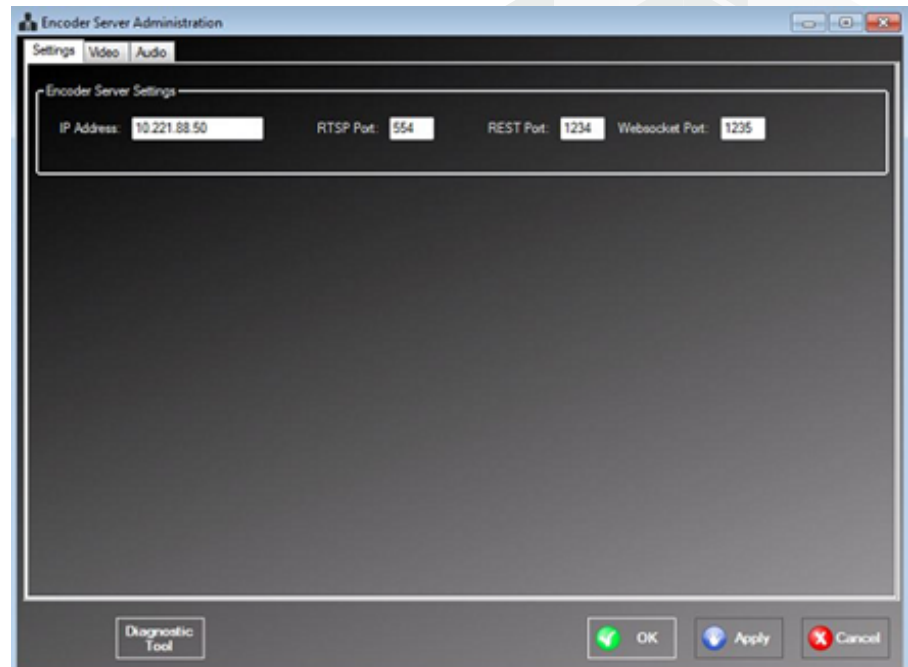


5. The **Encoder Server Administration** utility will launch.

a. Settings Tab:

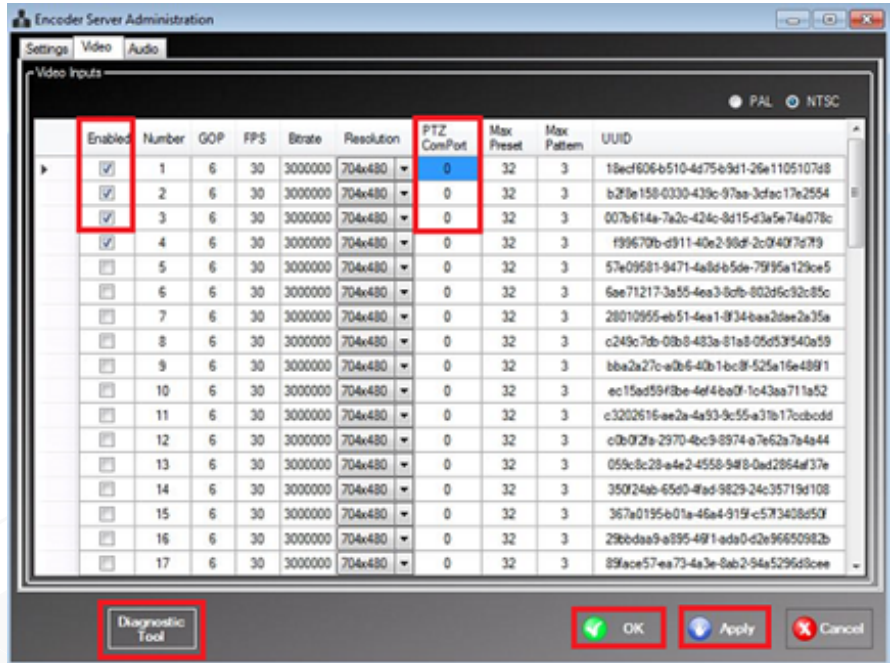
- **Encoder Server Settings.**

Make sure to type in the IP address of the server, do not leave localhost or 127.0.0.1. Recommend leaving the network ports default unless you know the ports have been changed



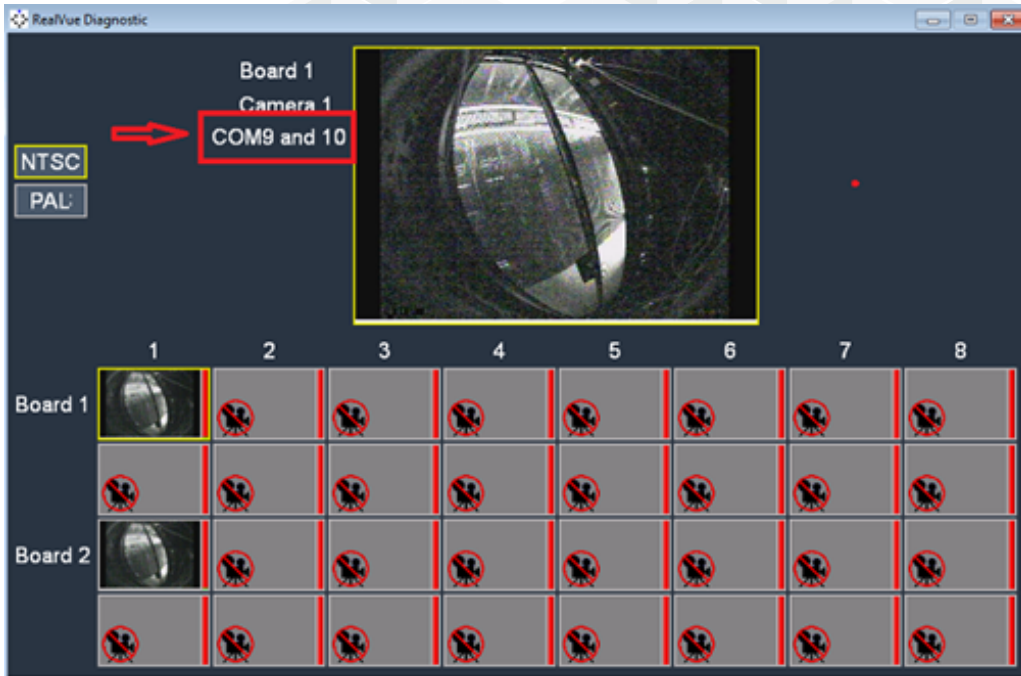
b. Video Tab:

- **Video Inputs.** Select **NTSC** or **PAL** video signal.
- **Enable / Disable** inputs
- Configure **Frames Per Second**
- **Video Resolution**
- **PTZ ComPort** if PTZ cameras are connected



c. Diagnostic Tool – Button at bottom of Encoder Server Administrator window.

- Verify video from connected analog cameras displays.
- Lists COM Port association to the ENC5516 encoders. The COM values listed in DS RealVue Diagnostic window match physical RS422 ports on the back of the encoder. There is a Left and Right port. For Coaxitron control use the Right COM port value listed in the Diagnostic tool.



To close just **X** out.

NOTE: If you receive an error trying to run the Diagnostic Tool “The program can’t start because mfc140u.dll is missing from your computer”. This indicates Visual C++ 2015 Redistributable (x86) is not installed. Install the pre-req to continue.

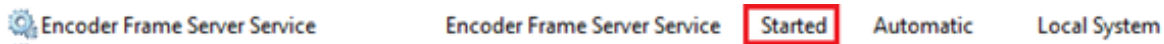
d. Audio Tab:

- Enable / Disable audio input



6. When finished with the configuration tabs, make sure to **Apply** and then **Ok**.

7. Verify the **Encoder Frame Server Service** is **started** in Services.msc.



8. Open **VxToolbox**, locate the ENC5516 encoder and **commission**.

How To Upgrade A DSSRV(1) To VxPro

If you want to upgrade a DSSRV1 to VxPro, then we recommend buying new VxPro hardware to get the optimal performance from your system. While you may be able to upgrade the DSSRV to VxPro, this configuration is not supported by Pelco.

Repurposing DS-CPPC As An Ops Center Workstation

Like Endura Workstation models, you can use your DS-CPPC and other DS client machines as VideoXpert as Ops Center workstations. You can install the Ops Center software in parallel with DS ControlPoint, and your workstations can serve operators using either system.

DS-CPPC to VxOCC migration requires VxOpsCenter software, available for free on Pelco.com/vxpro.

DS Migration Plan		VXP 3.1.1	VXP 3.3
1	VxPro software on DSSRV2 Hardware (With or W/O ENC5516) (Win 7 or 10) <ul style="list-style-type: none"> • Install VxP software on DSSRV2 hardware • Need VXP-1C for each channel • Need U1-AGG-1P for each channel if aggregating • DS ControlPoint clients need to be upgraded to VxOpsCenter 	Supported VxPro installer includes tool to migrate video from DS into VxP ENC5516's not supported	Supported VxPro installer includes tool to migrate video from DS into VxP ENC5516's supported
2	DSSRV1 hardware	Not Supported	Not Supported

Notes for DSSRV2 hardware:

- Max bitrate is 300Mbps (JBOD) or 350Mbps (RAID5)
- Max channel count 128 (128 Video + 128 Audio)

