



Pelco Connect Plugin for Genetec  
User Manual

**Document number:** C6723M

**Publication date:** 2025-05-23

## **Pelco Connect Plugin for Genetec User Manual**

© 2025, Pelco Corporation. All rights reserved. MOTOROLA, MOTO, MOTOROLA SOLUTIONS, and the Stylized M Logo are trademarks or registered trademarks of Motorola Trademark Holdings, LLC and are used under license. All other trademarks are the property of their respective owners. Unless stated explicitly and in writing, no license is granted with respect to any copyright, industrial design, trademark, patent or other intellectual property rights of Pelco Corporation or its licensors.

This document has been compiled and published using product descriptions and specifications available at the time of publication. The contents of this document and the specifications of the products discussed herein are subject to change without notice. Pelco Corporation reserves the right to make any such changes without notice. Neither Pelco Corporation nor any of its affiliated companies: (1) guarantees the completeness or accuracy of the information contained in this document; or (2) is responsible for your use of, or reliance on, the information. Pelco Corporation shall not be responsible for any losses or damages (including consequential damages) caused by reliance on the information presented herein.

Pelco Corporation  
pelco.com

C6723M  
Revision: 2 - EN  
20250523

# Contents

Pelco Connect Plugin for Genetec User Manual .....	4
Pelco Connect Plugin Requirements .....	5
Pelco Requirements .....	5
Genetec Requirements .....	5
Installing the Pelco Connect Plugin .....	6
Analytics Rules .....	7
Types of Analytic Rules .....	7
Loading Pre-Existing Camera Rules in Genetec .....	8
Configuring Analytics Rules in Genetec .....	9
Creating an Analytic Rule .....	9
Modifying Analytic Rules .....	10
Forensic Search .....	11
Loading Forensic Search in Genetec .....	12
Using Pelco Forensic Search .....	14
How do Forensic Search Filters Work? .....	16
Understanding Minimum Confidence .....	16
Examples .....	17
Troubleshooting Pelco Connect Plugin for Genetec .....	18
Changing the Log Level .....	18
More Information & Support .....	19

# Pelco Connect Plugin for Genetec User Manual

The Pelco Connect Plugin is a tool that provides access to extra Pelco camera functionalities from the Genetec Security Desk. The plugin allows you search footage using Pelco Forensic Search from within the Genetec system reducing the number of tools operators need to use when working on investigations. You can also configure Pelco Camera Analytics using the plugin.

This User Manual provides information and instructions for setting up and using the Pelco Connect Plugin for Genetec systems. The User Manual covers the following topics:

- Installing the Plugin – download and install the Plugin on the same computer as the Genetec software. The Plugin opens an extra interface in the Genetec Security Desk to display Forensic Search results.
- Forensic Search – launch the Forensic Search Plugin to search and filter video footage based on object classifications, for example, object type and color.
- Configuring Analytics – configure Pelco Camera analytics, and analytics rules, directly from the Genetec Security Center Config Tool.

# Pelco Connect Plugin Requirements

Review the following requirements before installing the Pelco Connect Plugin.

## Pelco Requirements

The features described in this User Manual are apply to the most recent version of the Pelco Connect Plugin for Genetec. Download the latest version of the Pelco Connect Plugin for Genetec installer at: [pelco.com/updates](http://pelco.com/updates).

Only Pelco analytic cameras that meet the following requirements will work with the Pelco Connect Plugin:

- Compatible with Pelco Advanced Analytics and Pelco Smart Analytics. Camera analytics must be turned on.  
See "General Settings" in the [Pelco Camera Operations Manuals](#) for instructions on how to set the Camera Mode to Full Feature.
- For Forensic Search, the cameras must be ONVIF Profile M compliant and able to generate metadata. Metadata must be turned on.  
See "Extended Settings" in the [Pelco Camera Operations Manuals](#) for instructions on how to enable Analytics SML Metadata.
- Installed at the correct height and angle to optimize analytic results.  
See [Designing a Site with Pelco Smart Analytics User Manual](#) for best practices on camera placement and settings.

## Genetec Requirements

Check the Genetec software version before installing the Pelco Connect Plugin. You can find the latest version of Genetec Security Center at [genetec.com](http://genetec.com).

Genetec Security Center minimum software version:

- Version 5.11+

# Installing the Pelco Connect Plugin

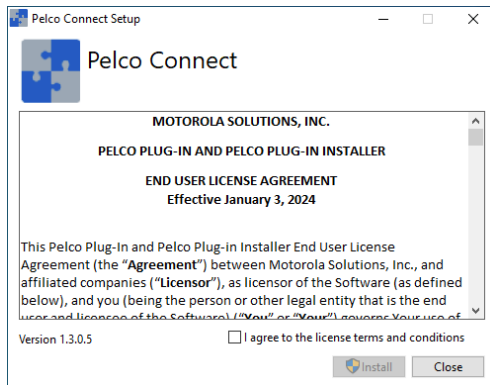
To install Pelco Connect Plugin for Genetec, you can download the Pelco Connect Plugin installer. The installer contains all the necessary software for the plugin, that includes the prerequisites and the plugin itself. Running the installer installs all the necessary components. Installation usually takes less than one minute.



## NOTE

During the installation, the recording services will need to restart. Verify that the Archiver is OK to restart at this time.

1. Download the Pelco Connect Plugin for Genetec installer at [Pelco Camera Integrations Portal > Genetec](#).
2. Launch the installer. You will have to select the **I agree to license terms and conditions** checkbox.



**Figure 1:** The Pelco Connect Plugin installer shows the End-User License Agreement.

3. Select the **I agree** checkbox to install and restart the services when prompted.
4. Click **Install**.
5. After the installation is complete, click **Close**.
6. Once the installation is complete, the plugin will appear in the Genetec Security Center.

# Analytics Rules

You can use the Pelco Connect Plugin to configure camera analytics from the Genetec Security Center Config Tool.

Analytic rules are sets of conditions regarding activity in the camera's field of view. If the conditions are met, the camera will trigger an alarm in the Genetec system. Analytic rules trigger analytic events, then the events become alarms in the system.

You can view, create and manage analytic rules in the *Analytics* area in the Genetec Security Center Config Tool.

## Types of Analytic Rules

You can find analytic rules in the *Analytic Rules* area. Select a rule with a colored icon to load a preview. The preview displays the overlays and arrows to help you understand how the rule is configured.


- Overlays – the overlay indicates the region of interest. The region of interest is the area that the analytic rule applies to. Orange overlays apply to vehicles. Blue overlays apply to people. Red overlays indicate exclusion zones. These areas are excepts to the rule.
- Arrows – the directional arrows indicate the direction of travel. The rule will applies to objects traveling in the same direction as the arrow. Rules can detect objects traveling in either direction, indicated by two directional arrow pointing in opposite directions.

# Loading Pre-Existing Camera Rules in Genetec

Before you start creating new analytics rules, you must load the pre-existing analytic rules into Genetec Security Center Config Tool.

Follow these steps to load the pre-existing analytic rules:

1. Navigate to the Config Tool Tasks in the Genetec Security Center Config Tool.



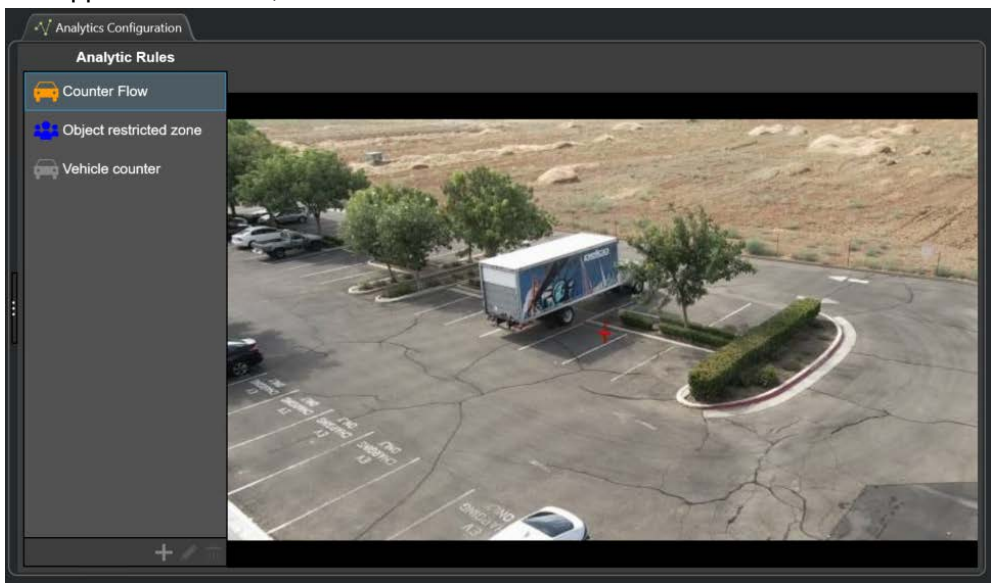
**TIP**  
The Config Tool Tasks is located under the Administration options.

2. Open a Video tab.
3. Select a server from the side menu.
4. Select a camera that supports advanced analytics.
5. Select the *Analytics* tab from the top ribbon.



**Figure 2:** The Analytics tab is shown on the top ribbon of the Genetec Security Center Config Tool.

6. Enter a password.
7. Click **Save**. This loads all existing rules into the *Analytics Rules* area.  
Rules that are not enabled are grayed out. The icons also indicate what the rule applies to, for example, the person icon indicates that the rule applies to people, the vehicle icon indicates that the rule applies to vehicles, etc.



**Figure 3:** The Analytics Rules are options are shown on the left side panel.

# Configuring Analytics Rules in Genetec

You create and modify Analytics Rules in the *Analytics* area in the Genetec Security Center Config Tool.



## NOTE

For PTZ cameras, ensure that you select either a PTZ Preset option or the PTZ Home position before configuring analytic rules. Select the *Analytics Configuration* tab and select a preset from the *Presets* drop-down list.

## Creating an Analytic Rule

Follow these steps to create an analytic rule:

1. Click the **+** button.
2. Select a rule in the *Select Rule* area. The *Rule Settings* will open.
3. Enter a unique name for the rule in the *Rule Name* area.



## NOTE

The **Save** button is grayed out if the rule name already exists in the list of rules.

4. Click the **Rule is Enabled** check box to enable.
5. You can adjust any of the rule settings at this time.



## NOTE

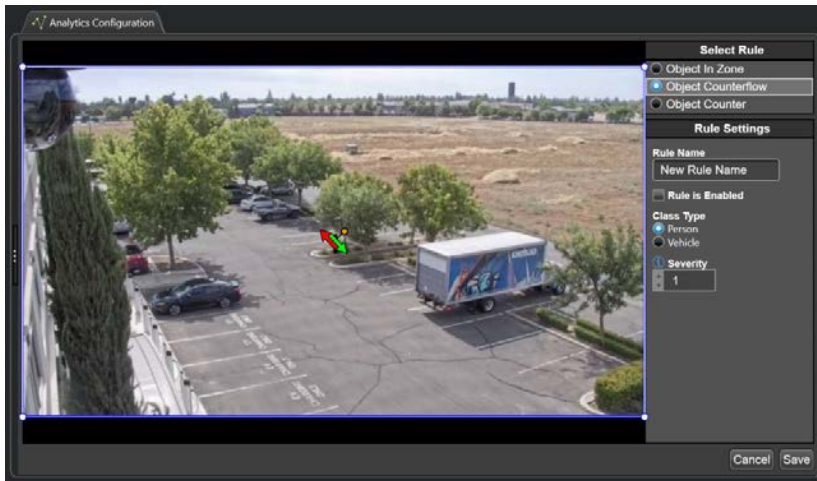
Pelco cameras are designed to detect moving objects that are in the field of view for at least 2 seconds. Objects that enter the field of view from behind the camera may take up to 4 seconds to be detected.

6. Click **Add Exclusion Zone** to add an exclusion zone. A red overlay will appear indicating the exclusion zone.  
Exclusion zones indicate areas in the camera's field of view where the rule does not apply.
7. Resize the Exclusion Zone as needed.
8. Click and drag the Exclusion Zone to move it.
9. Right-click a zone to delete it.
10. Click **Send to Back** in the case of two overlapping shapes. You can send one shape to back to access the other.
11. Click **Save**. The main page appears with the new rule shown in the *Analytic Rules* area.

## Modifying Analytic Rules

Follow these steps to modify an analytic rule:

1. Select a rule from the *Analytic Rules* area.
2. Click the **pencil** icon. Rule Settings will appear to the right of the screen.



**Figure 4:** The Rule Settings panel in the Genetec Security Center Config Tool.

3. Modify the rule settings as needed.
4. Click and drag the corners of the overlays to resize them.
5. Select the lines or arrows to move or rotate the directional arrows.
6. Click **Save**.
7. Click the **trash** icon if you want to delete a rule.

# Forensic Search

Forensic Search allows you to search forensic events in Genetec Security Desk. Forensic Search requires the Forensic Search plugin which gets installed by the Pelco Connect Plugin installer.



**NOTE**

Pelco Forensic Search requires an additional license. Make sure the license contains this part: GSC-1SDK-PELCO-CFSEARCH.

# Loading Forensic Search in Genetec

Before you can use the Forensic Search, you must configure the Pelco Forensic Search Plugin on the Archiver using the Genetec Security Center Config Tool. Follow these steps to launch the Forensic Search plugin:

1. Select the **Plugin** Task in the Config Tool.

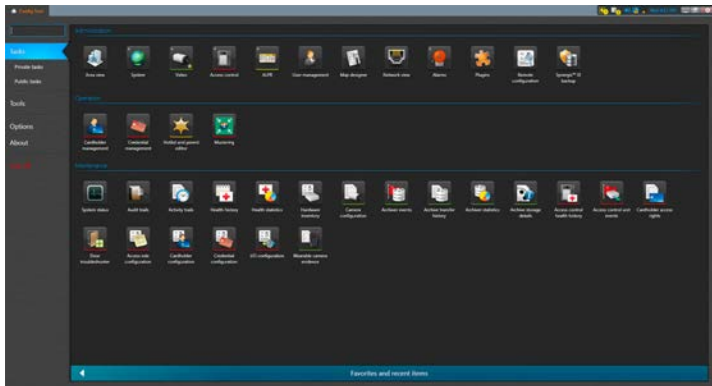


Figure 5: The Forensic Search plugin icon in the Genetec Security Center Config Tool.

2. Select **Add Entity** and choose the **Plugin** option.

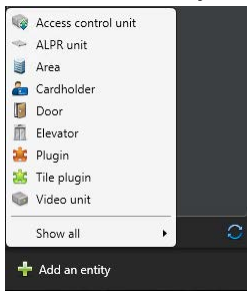


Figure 6: The pop-up menu of Entities in the Genetec Security Center Config Tool.

3. Select the **Pelco Forensic Search Plugin**.

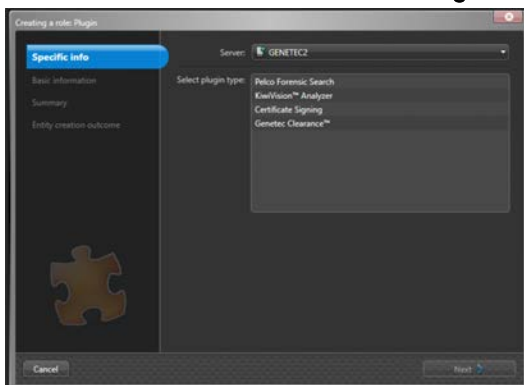
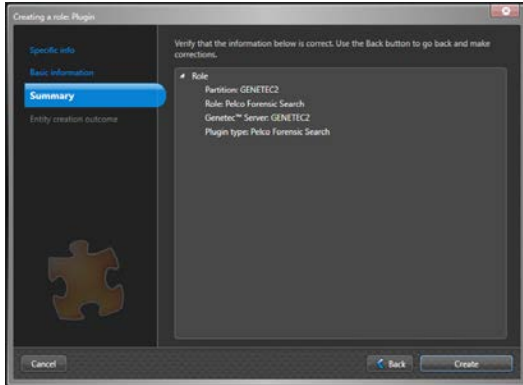


Figure 7: The Pelco Forensic Search Plugin is listed in the Configuration Plugin window in the Config Tool.

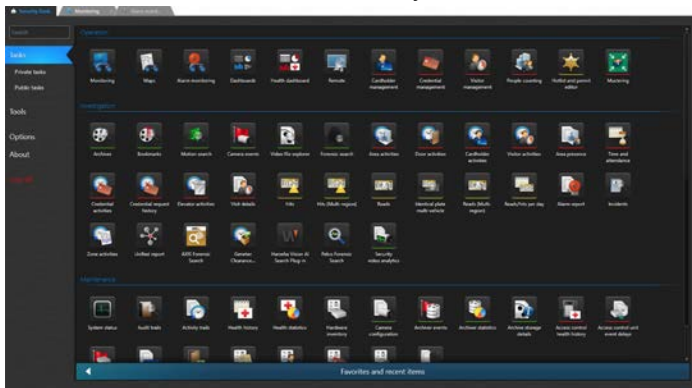
4. Select **Next**, then select **Create** to complete the process.

## Pelco Connect Plugin for Genetec User Manual



**Figure 8:** Create a new plugin option in the Config Tool.

5. The Pelco Forensic Search Plugin is now configured on the Archiver. You can find the Pelco Forensic Search icon in the Security Desk Menu.



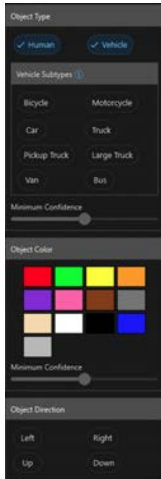
**Figure 9:** The Pelco Forensic Search icon is shown in the Security Desk Menu.

# Using Pelco Forensic Search

You can use the Pelco Forensic Search in the Genetec Security Center Config Tool. Forensic Search uses filters to narrow search results. If you need more information or examples, see [How do Forensic Search Filters Work? on page 16](#)

Follow this order of operation when searching for Forensic Events:

1. Select the **filter** icon on the Pelco Forensic Search tile to open it.



**Figure 10:** The Pelco Forensic Search panel in the Genetec Security Center Config Tool.

2. Select the Region Filter and use the search bar to search for cameras. Selecting a camera will prompt the plugin to search through footage from that camera.
3. Select the Object Types to include objects of that type in the search results.
4. Click and drag the slider to adjust the Object Type Minimum Confidence (0 to 100).



## NOTE

If you select multiple object types, the search includes results with either object type. When filtering based on Object Type, selecting multiple object directions will display results with either of the object directions. However, when you select an object direction and then adjust the confidence level, the search will exclude results that don't meet both criteria: the object direction and the minimum confidence level.

5. Select the Object Color to include objects of that color in the search results.
6. Click and drag the slider to adjust the Object Color Minimum Confidence (0 to 100).
7. Select the Object Direction to include objects moving in that direction in the search results.
8. Click and drag the slider to adjust the Object Direction Minimum Confidence (0 to 100).



**NOTE**

If you select multiple object directions, the search includes results with either object direction. When filtering based on Object Direction, selecting multiple object directions will display results with either of the object directions. However, when you select an object direction and then adjust the confidence level, the search will exclude results that don't meet both criteria: the object direction and the minimum confidence level.

9. Click and drag the slider to adjust the Minimum Time in Scene(s) (0 to 300). The default is 2 seconds.
10. Click **Search**.

# How do Forensic Search Filters Work?

Forensic Search Filters group objects by attribute, for example, object type, color and direction. The filters return results when any condition within an attribute group is met. Those results are then combined with other attribute groups to further refine the search results.

You can use Forensic Search Filters to narrow the search results based on object classifications, for example, object type and color. There are three basic search filters, outlined below. You can also set a minimum confidence (0 to 100) required for the system to trigger an alarm.

Search filters:

- Object Type – select the object types to include them in the search results.
- Object Color – select the object colors to include them in the search results.
- Object Direction – select the object direction to include objects moving in that direction in the search results.

## Understanding Minimum Confidence

Selecting multiple object types or object directions will broaden the search results, including results that have either type or direction. However, minimum confidence works differently when selecting multiple object types or multiple object directions.

- When filtering based on Object Type, selecting multiple object directions will display results with either of the object directions. However, when you select an object direction and then adjust the confidence level, the search will exclude results that don't meet both criteria: the object direction and the minimum confidence level.
- When filtering based on Object Direction, selecting multiple object directions will display results with either of the object directions. However, when you select an object direction and then adjust the confidence level, the search will exclude results that don't meet both criteria: the object direction and the minimum confidence level.

## Examples

Review the examples below to help understanding how the filters work.

### Example 1: How to Search for a Human Wearing Blue or a Blue Vehicle

If you wanted to find footage that contained either a human wearing blue or a blue vehicle, select the filters as follows:

- Object Type:
  - Human = Checked
  - Vehicle = Checked
- Color:
  - Blue = Checked

### Example 2: How to Search for a Human Wearing Blue or Red or a Blue Vehicle or a Red Vehicle

If you wanted to find footage that contained either a human wearing blue or red or a blue or red vehicle, select the filters as follows:

- Object Type:
  - Human = Checked
  - Vehicle = Checked
- Color:
  - Blue = Checked
  - Red = Checked

The screenshot below demonstrates the selected search filters from this example:

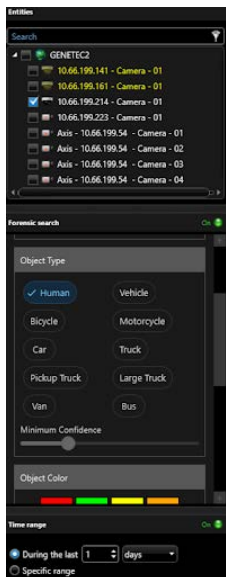


Figure 11: Object type is (Human or Vehicle) AND Color is (Blue or Red).

# Troubleshooting Pelco Connect Plugin for Genetec

When installing or using Pelco Connect, you might need to troubleshoot issues. It can help to check the system logs when debugging.

## Changing the Log Level

You can find logs in the following directory: C:\ProgramData\Pelco\Broker.

Follow these steps to change the log level for the Pelco Connect Plugin:

1. Stop the Genetec Security Center application.
2. Edit file C:\ProgramData\Pelco\Genetec\Plugins\{PluginName}\Broker.Common.dll.config.
3. Set the log level to whatever is necessary, default is Warning.
4. Start the Genetec Security Center application.

## More Information & Support

For additional product documentation and software and firmware upgrades, visit [support.pelco.com](https://support.pelco.com).

### Technical Support

Contact Pelco Technical Support at [support.pelco.com/s/contactsupport](https://support.pelco.com/s/contactsupport).