

## Meaningful Integration:

## VideoXpert™ and Schneider Electric Access Expert™ Access Control



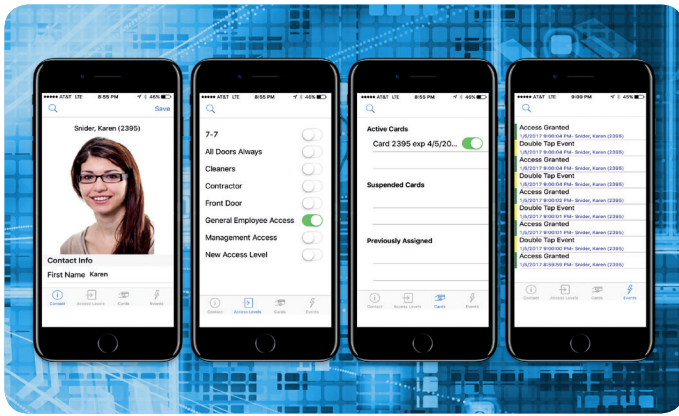
### At a Glance

- Combines data from disparate platforms
- 100% Web-based management
- Merges physical and cyber security
- Enables mobile access via an easy-to-use web interface
- Integrates relevant video and access system data
- Cloud and software-based solution

## Experience Beyond Open Systems

Schneider Electric's Access Expert seamlessly integrates with Pelco's VideoXpert VMS to deliver enterprise access control that combines data from disparate platforms, merges physical and cyber security and enables operators to respond with confidence through mobile applications and an easy-to-use web interface. A video surveillance system designed around Pelco's extensive selection of cameras and VideoXpert VMS captures the relevant video and data to give operators situational awareness. The integration of Access Expert into VideoXpert's Ops Center allows seamless access to data from multiple systems, all from a central location. With powerful analytics integrated into the VideoXpert VMS, data is not only accessible, but also actionable, providing operators with the tools they need to make fast, effective decisions that drive their businesses forward.





## Maximum Flexibility

The Access Expert cloud-based solution for access on-the-go combined with the robust system architecture of VideoXpert enables scalability that allows you to grow your systems, as you grow your business.

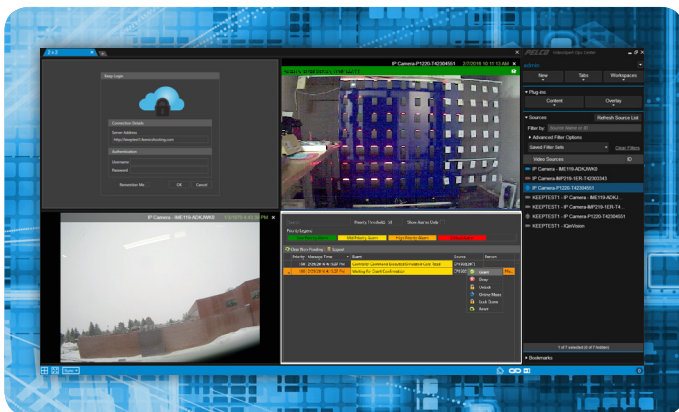
- Cloud-based solution for high availability
- Two-factor authentication and secure encryption ensures your data is safe and protected
- Mobile applications for access on the go
- Mass Messaging for quick communications



## Seamless Integration

Access Expert and VideoXpert work together to maximize the capabilities of existing management software, building automation, and intrusion detection systems to deliver a solution that provides you the critical data you need, when you need it.

- Reduced cost of ownership by leverage existing investments
- Cloud- and software-based solution requires minimal hardware
- Integrates to other security platforms with ease as your business expands
- Accommodates wireless locks reducing wiring costs



## Operational Efficiency

The combined solution of Access Expert in VideoXpert delivers a single intuitive user interface, so you can make quick, effective decisions. No more training on disparate platforms.

- Provides optimal user experience
- Reduces training time and costs
- Unifies operational and security data with real-time alerts
- Robust search capabilities quickly locate the information you need



**About Schneider Electric**  
Schneider Electric is the global leader in sustainable energy management and industrial automation. Schneider Electric's expertise in energy management, automation, software and services allows integration and connection to operational technologies in ways not possible just a few years ago.

To learn more, visit [schneider-electric.us/accessexpert](http://schneider-electric.us/accessexpert)

Model: OCCPLUGAXPERT

Contact the sales representative in your area today or visit [pelco.com/videoexpert](http://pelco.com/videoexpert) to learn more.

VideoXpert and Access Expert users must meet system and eligibility requirements to utilize the driver and/or plug-in. Purchase of Schneider Electric Access Expert is required.