

## Pelco Video Server 2.7.0 and Software House C•CURE 9000 v2.7 Integration

SINGLE, EFFICIENT, ENTERPRISE-CLASS SECURITY MANAGEMENT SOLUTION

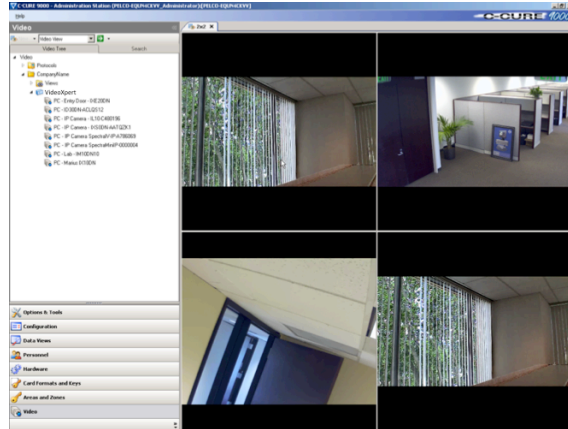
The Pelco Video Server / Software House C•CURE 9000 integration combines the strengths of both platforms into a single effective enterprise class security management solution. From one user interface, the C•CURE 9000 operator has quick access to the powerful capabilities of the Pelco video server, VideoXpert®. This combination of access control/event management and enterprise class video handling takes operator efficiency to a new level.

The Pelco/C•CURE 9000 integration allows the operator to easily view and control all Pelco video from the C•CURE 9000 user interface. For real-time monitoring the operator is presented with video in response to events C•CURE 9000 is tracking. Single- and multi-camera views can be displayed manually or automatically providing a visual assessment of an event that is unfolding. Direct control of a camera's pan tilt and zoom capabilities allows the operator to closely monitor an incident or follow a suspect. Pan/Tilt control can be automated by using pre-set positions and patterns to position cameras in response to an event.

The Pelco/C•CURE 9000 integration simplifies investigations by associating recorded video with events. The C•CURE 9000 operator can instantly see what was happening during an incident by simply clicking on the video icon associated with the event.

This level of control makes it possible to see if a specific individual was carrying an object as they passed through an exit or what was occurring when a panic alarm was triggered. The integration allows for the configuration of how much pre- and post-alarm recording to retrieve. Full playback controls allow the operator to quickly get to the information needed and then closely analyze the recording details. Search by time/date capabilities extend the investigations beyond event associated recordings. Any video can be exported directly from the C•CURE

9000 user interface expediting the investigation documentation process.



The seamless integration between Pelco VideoXpert® combined with C•CURE 9000, allows a simple bulk import of all Pelco video devices. This configuration also simplifies set up and includes additional capabilities such as the ability to dynamically select on-screen video overlays (motion, analytics, and text) for live viewing, playback, or exported video.

The unlimited scalability, high level of performance and flexible redundancy options of the Pelco Video Management System make it a perfect complement to the powerful capabilities of C•CURE 9000. The Pelco/C•CURE 9000 integration provides the operator with the tools and visual information they need to efficiently respond to situations as they occur and to effectively run investigations after the fact.

### Product Features

- Use with Pelco's VideoXpert®
- View/Control Pelco video, live and recorded
- Easily recall recorded video associated with events or advanced search tools
- Tight integration with C•CURE 9000 security and event management system
- Mark video for quick recall later, automatically or manually from C•CURE 9000
- Seamless integration allows quick bulk import of all Pelco video devices (analog, IP cameras, encoders, recorders) simplifying set-up
- Advanced P/T/Z control, including setting and calling of presets & patterns
- Monitor and trigger events based upon Pelco motion events
- Automatically or manually display single or multiple camera views within the C•CURE 9000 user interface
- Export video without overlay data
- Full control of playback video including Pause, Fast Forward, Fast Rewind, and a Slider control for position

## Feature List

The features of VideoXpert are listed in the table below.

Feature	VideoXpert
Import Cameras	Yes
Add cameras manually	Yes
View live video from Pelco cameras	Yes
View playback from Pelco recorders	Yes
Text Overlay	No
Receive Video alarms (motion, analytics, physical/dry contact alarms)	Motion events only <sup>1</sup>
Receive video loss (online/offline) events	Yes
Export video	MKV format
Codec (H.264 and MPEG-4)	H.264 only
Stream Protocol (RTP/RTSP)	RTSP only
Take a JPEG snapshot of video	Yes
Validate user credentials	Yes
Log information and errors	Yes
Pan-Tilt-Zoom operations	Yes
Presets and patterns	Yes
Video tours	Yes
Support for audio	No
Perform actions such as lock and record video on events	No
Unicast/multicast communications	Yes <sup>2</sup>
VideoXpert aggregation	Yes
Receive events from multiple Pelco Video Servers	Yes
Manual recording	No
16 Stream support	Yes
Secondary/low bandwidth streaming for live video	No

---

<sup>1</sup> Motion events will be displayed as “Video Analytic” events in VideoXpert.

<sup>2</sup> The unicast/multicast settings have to be changed via VideoXpert admin portal.

# PRODUCT SPECIFICATION

## Ordering Information

The following items are required to complete your Pelco/C•CURE 9000 integration:

### CC9000-PELCOVID

License option for Pelco/C•CURE 9000 integration; available at Software House

### Integration Version

Pelco C•CURE 9000 Integration 2.7.0 (via VideoXpert SDK 3.0)

### Minimum Requirements

Please refer to CCure documentation

## Compatibility

VideoXpert	Version 3.x
C•CURE 9000	Version 2.7

## Supported Server Operating Systems

Please refer to VideoXpert and CCure documentation

## Supported Client Operating System

Please refer to CCure documentaion

