

VideoXpert v 3.x
Net2 Video Integration
Installation and Operations Manual



VideoXpert™

Document number: C6684M-A

Publication date: 12/20

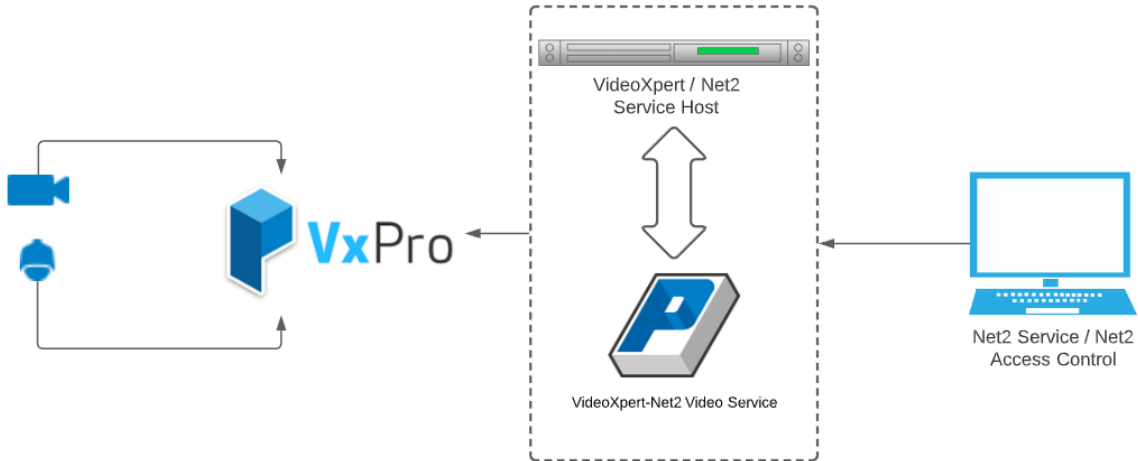
Table of Contents

Introduction	3
System Overview	3
Installing the Software	3
Installing Prerequisites	3
Installing VideoXpert-Net2 Video Service	4
Licensing VideoXpert-Net2 Video Service	6
Configuring VideoXpert-Net2 Video Service	6
Configuring VideoXpert Video Settings	7
Configuring Integrated Cameras	9
Configuring Integrated Cameras With Card Reader Events	9
Troubleshooting	10
Pelco Troubleshooting Contact Information	10
Version Information	11
Integration Component Version	11
Net2 Version	11

Introduction

This document is the installation and operation manual for VideoXpert Video Integration with Net2.

System Overview



The VideoXpert-Net2 Video Service provides the ability to view video from a connected VideoXpert system. After the Service is installed the user can access the cameras connected to the VideoXpert system via the Net2 Access Control application. There is no separate UI for VX Net2 Video Integration; configuration and viewing video is done through Net2 access control application.

Installing the Software

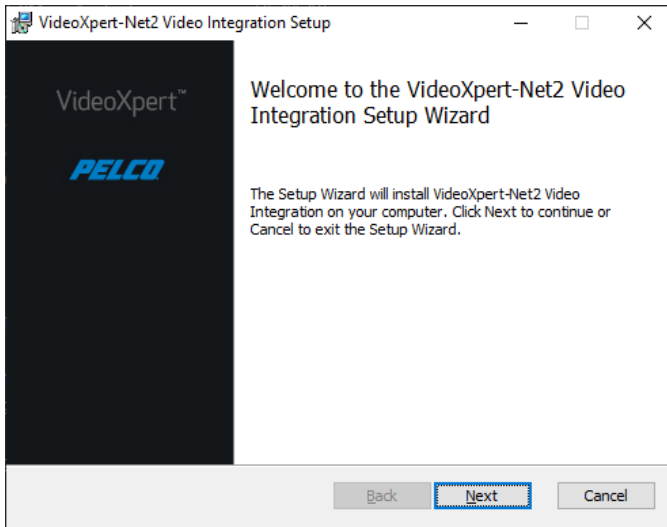
Installing Prerequisites

Prior to installation of this software, install the following:

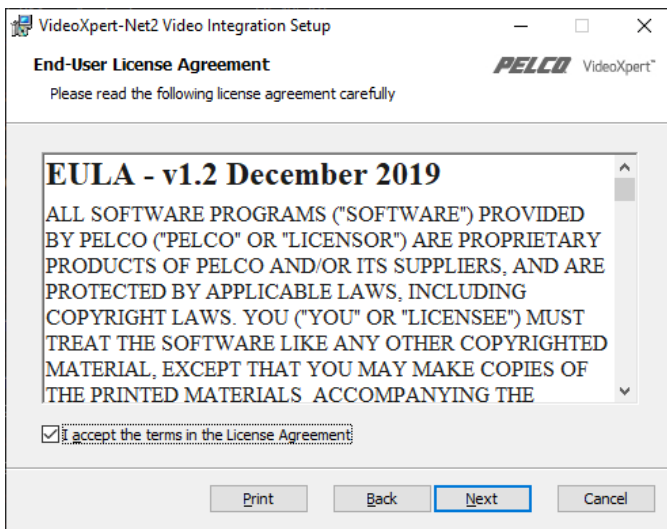
- .NET Framework 4.6.1 or later
- Microsoft Visual C++ 2015 Redistributables (x86)

Installing VideoXpert-Net2 Video Service

1. Double click the **VideoXpert-Net2 Video Service Installer-3.X.X.msi** file to start the installation.
2. Click **Next**.

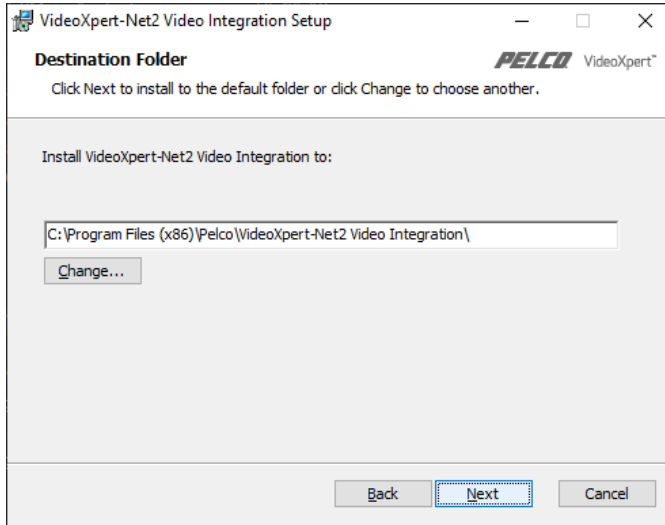


3. Click to select the checkbox to accept the terms of the End-User License Agreement, and then click **Next**.

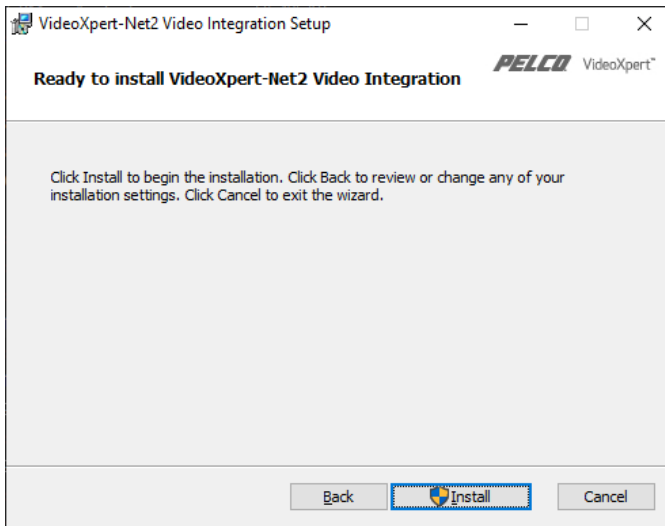


VideoXpert v 3.x Net2 Video Integration Installation and Operations Manual

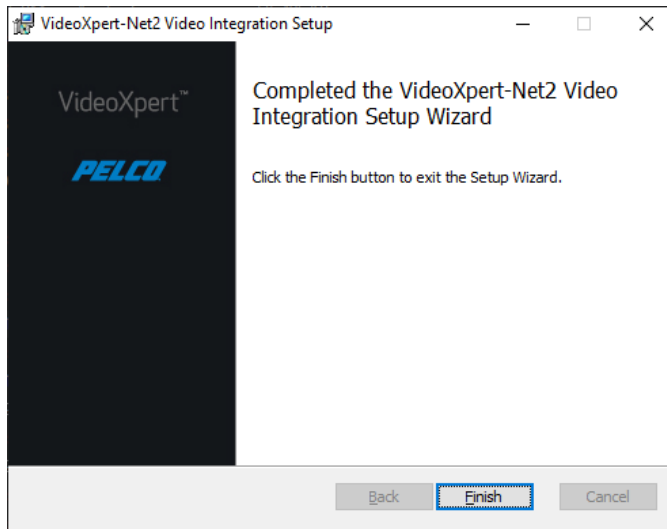
4. (Optional) To select an installation directory other than the default:
 - a. Click **Change**.
 - b. Navigate to the appropriate directory, and then click **OK**.



5. Click **Next**.
6. Click **Install**.



7. Click **Finish**.



Licensing VideoXpert-Net2 Video Service

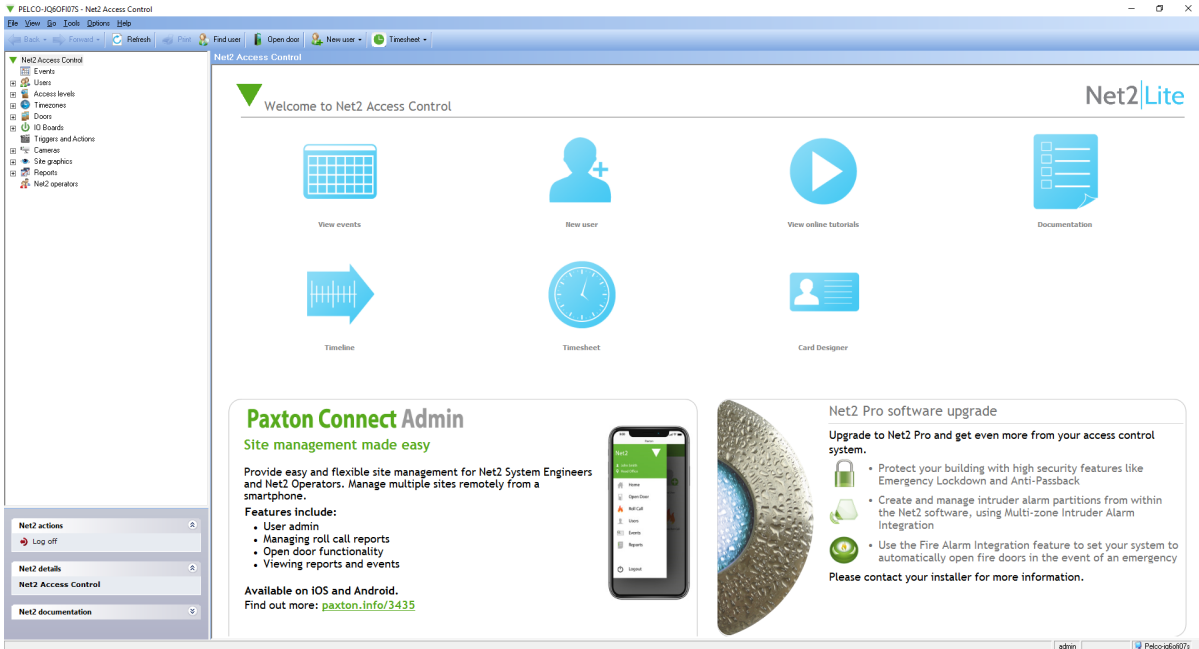
The VideoXpert-Net2 Video Service requires a license to be present on each VideoXpert system that will be added to it. If a license is not present on the system when it is added, a 90-day trial period will begin on that system. The VideoXpert-Net2 Video Service will be able to use the system normally during this period. If the system remains unlicensed when the trial period expires the VideoXpert-Net2 Video Service will no longer be able to communicate with the system until a valid license has been applied.

For assistance, contact Pelco Product Support at 1-800-289-9100 (USA and Canada) or +1-559-292-1981 (international).

Configuring VideoXpert-Net2 Video Service

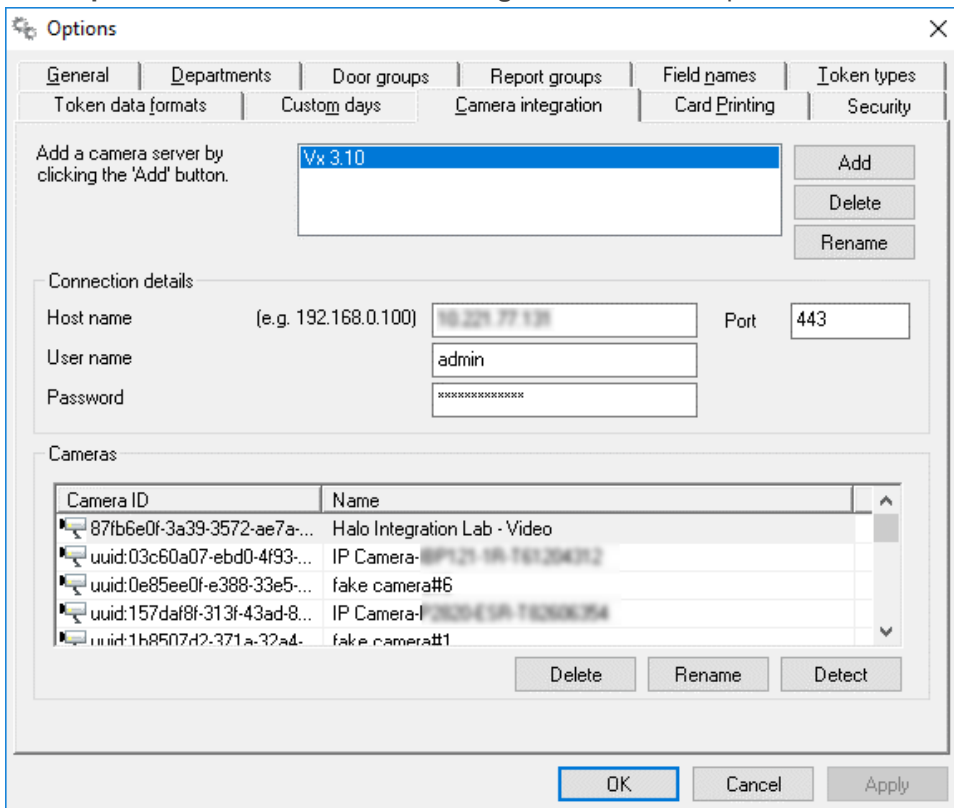
After installing the VideoXpert-Net2 Video Service, configure it using Net2 Access Control. To do so, start the Net2 Access Control application, and then log in with the configured Net2 Operator user.

VideoXpert v 3.x Net2 Video Integration Installation and Operations Manual

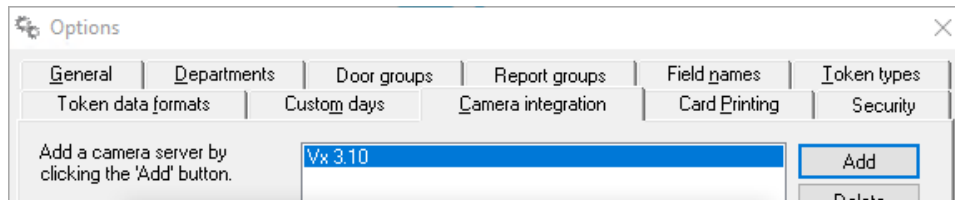


Configuring VideoXpert Video Settings

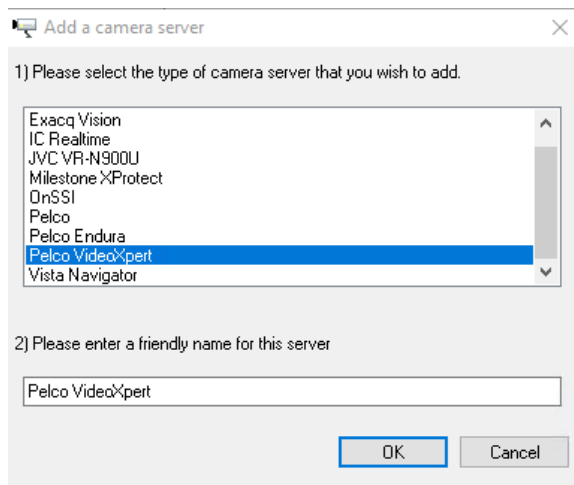
1. Launch the Net2 Access Control application.
2. Click **Options**, and then click **Camera integration** from the drop-down menu.



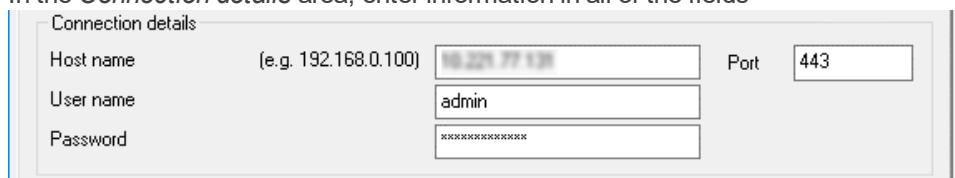
3. Add a camera server.
 - a. In the *Add a camera server by...* field, click **Add**.



- b. In the *Add a camera server* dialog box, click to select **Pelco VideoXpert**, and then type in any friendly name for the server.



- c. Click **OK**.
4. Add connection details.
 - a. In the *Connection details* area, enter information in all of the fields



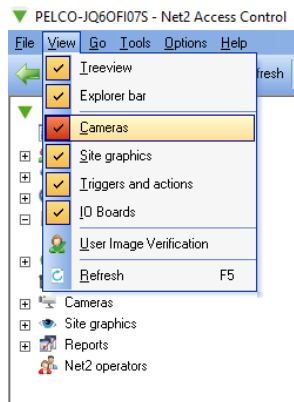
- *Host name*—IP address of the VideoXpert system
 - *Port*—443
 - *User name*—VideoXpert User name
 - *Password*—VideoXpert Password
- b. Click **Detect**. When the *Cameras* list populates, the VX system and cameras are integrated with Net2 Access Control.
 5. Click **OK**.

Configuring Integrated Cameras

Using Net2 Access Control, you can add integrated cameras individually. This opens the camera web application within the Net2 Access Control application so that the user can change any camera-related settings.

To add integrated cameras:

1. Start the Net2 Access Control application, and then log in with the configured Net2 Operator user.
2. Click **View**.
3. Click to select the checkbox for **Cameras** in the drop-down menu.



4. In the left panel, right-click **Cameras**, and then click **Add New Camera**.
5. In the *Camera Properties* dialog box, enter the camera *Name*, the *URL*, and *Comments* (optional); and then click **OK**.
6. In the login dialog box, enter the *Username* and *Password*, and then click **Log In**.
The camera web server opens in the right panel of the Net2 Access Control application.
7. In the camera web server, control the camera features. You can configure alarm sources, configure motion detection, change stream configuration, enable or disable audio, etc.

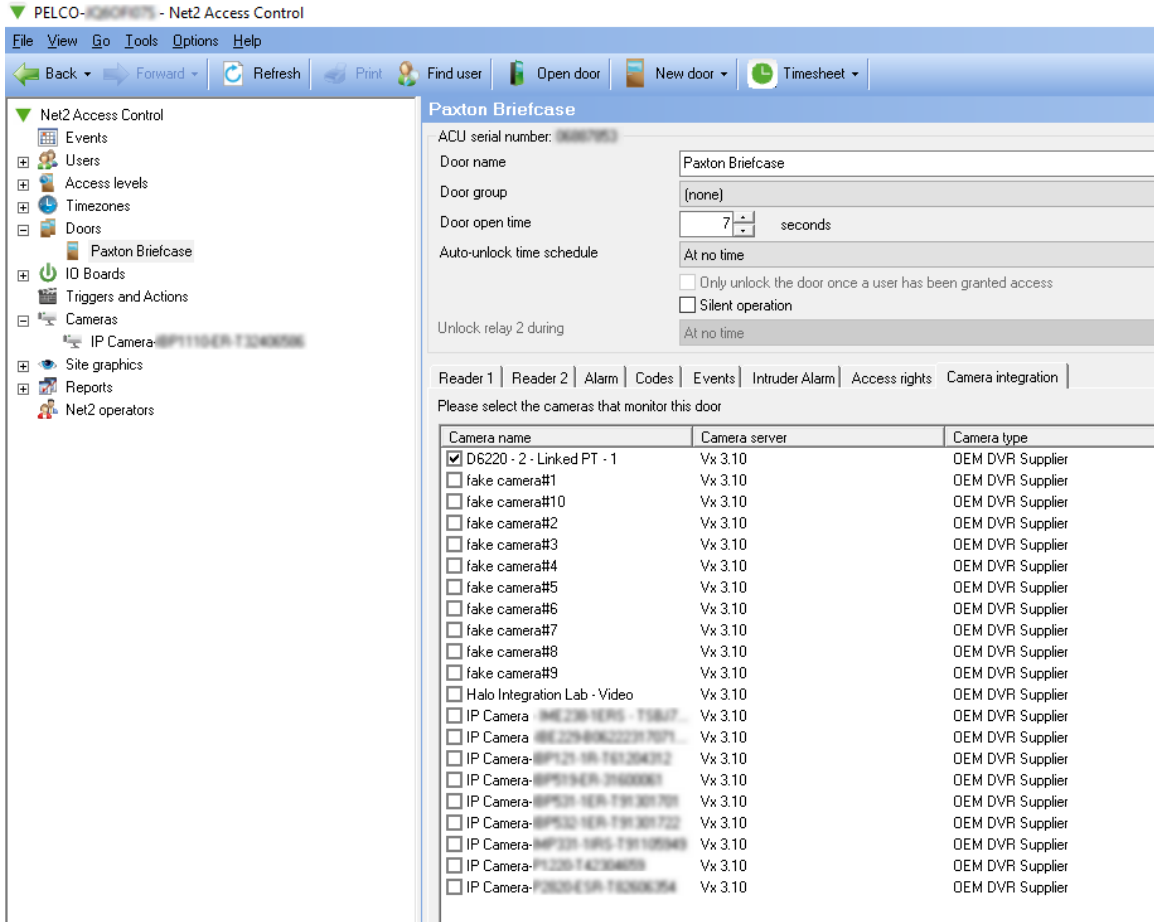
Configuring Integrated Cameras With Card Reader Events

You can configure cameras to be displayed when events occur on card readers. For example, if an access was permitted or denied on a card reader, and if an integrated camera is associated with the event, then you can click directly on the event to watch the live stream from the associated camera.

To associate the cameras with the events:

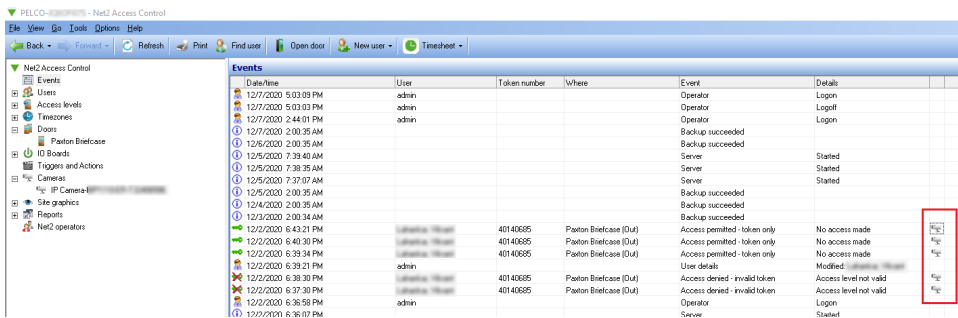
1. Start the Net2 Access Control application, and then log in with the configured Net2 Operator user.
2. In the left panel, click to expand **Doors**, click to select the appropriate door, and then click the **Camera integration** tab in the right panel.

VideoXpert v 3.x Net2 Video Integration Installation and Operations Manual



3. Click to select the checkboxes for all of the cameras to associate with events from that card reader.

When events are received from the card reader, on the events page in the Net2 Access Control application, you can see the camera icon present for cameras associated with the card reader.



Troubleshooting

Log files for the middleware are located at C:\ProgramData\Pelco\VxNet2Events.Service\Logos.

Pelco Troubleshooting Contact Information

For further assistance, contact Pelco Product Support at 1-800-289-9100 (USA and Canada) or +1-559-292-1981 (international).

Version Information

Integration Component Version

Component Name	Version	Description
VideoXpert-Net2 Video Service	3.0.0-11	

Net2 Version

Component Name	Version	Description
Net2	6.02.8927.3767	



Pelco, Inc.
625 W. Alluvial, Fresno, California 93711 United States
(800) 289-9100 Tel
(800) 289-9150 Fax
+1 (559) 292-1981 International Tel
+1 (559) 348-1120 International Fax
www.pelco.com

Pelco, the Pelco logo, and other trademarks associated with Pelco products referred to in this publication are trademarks of Pelco, Inc. or its affiliates. ONVIF and the ONVIF logo are trademarks of ONVIF Inc. All other product names and services are the property of their respective companies. Product specifications and availability are subject to change without notice.

© Copyright 2020, Pelco, Inc. All rights reserved.