



Integration with smart building management systems...

SPRVSR+ Plug-In Integration with VideoXpert

Nowadays, where smart building technology is widely used, it is necessary to manage different systems from a single center. Firmware software that offers solutions for this need, become much more preferred as a result of technological partnerships.

Mavili Elektronik has been developing products and services in the field of fire and gas detection systems since 1987. It offers solutions to this need by producing products that are included in smart building technology and can work integrated.

Being a solution partner of Mavili and Pelco which designs high quality IP video security systems, has made an important difference in ensuring the safety of life and property against fires that may occur in the areas where smart building technology is used. Mavili's Maxlogic SPRVSR + Plug-In software has been integrated into Pelco's roof software which is called VideoXpert.

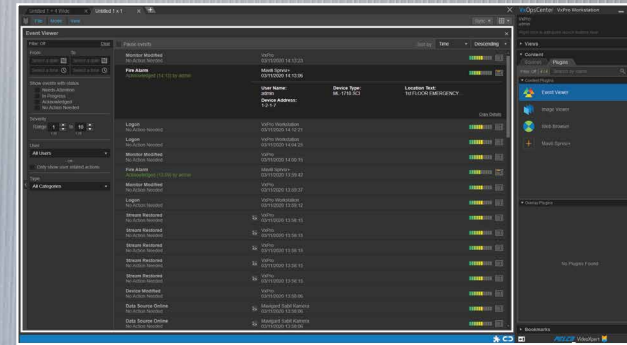
- ▶ Maxlogic & Mavigard brand fire detection and alarm devices can be displayed graphically on the floor plan
- ▶ Access to detailed map and device information of the location
- ▶ Ability to realize all interventions that can be made with the panel
- ▶ Ability to switch between maps Automatically or manually
- ▶ In case of fire, fire information is displayed on the pop-up screen
- ▶ Displaying the location with fire information from the cameras that match the device where the fire alarm is coming from



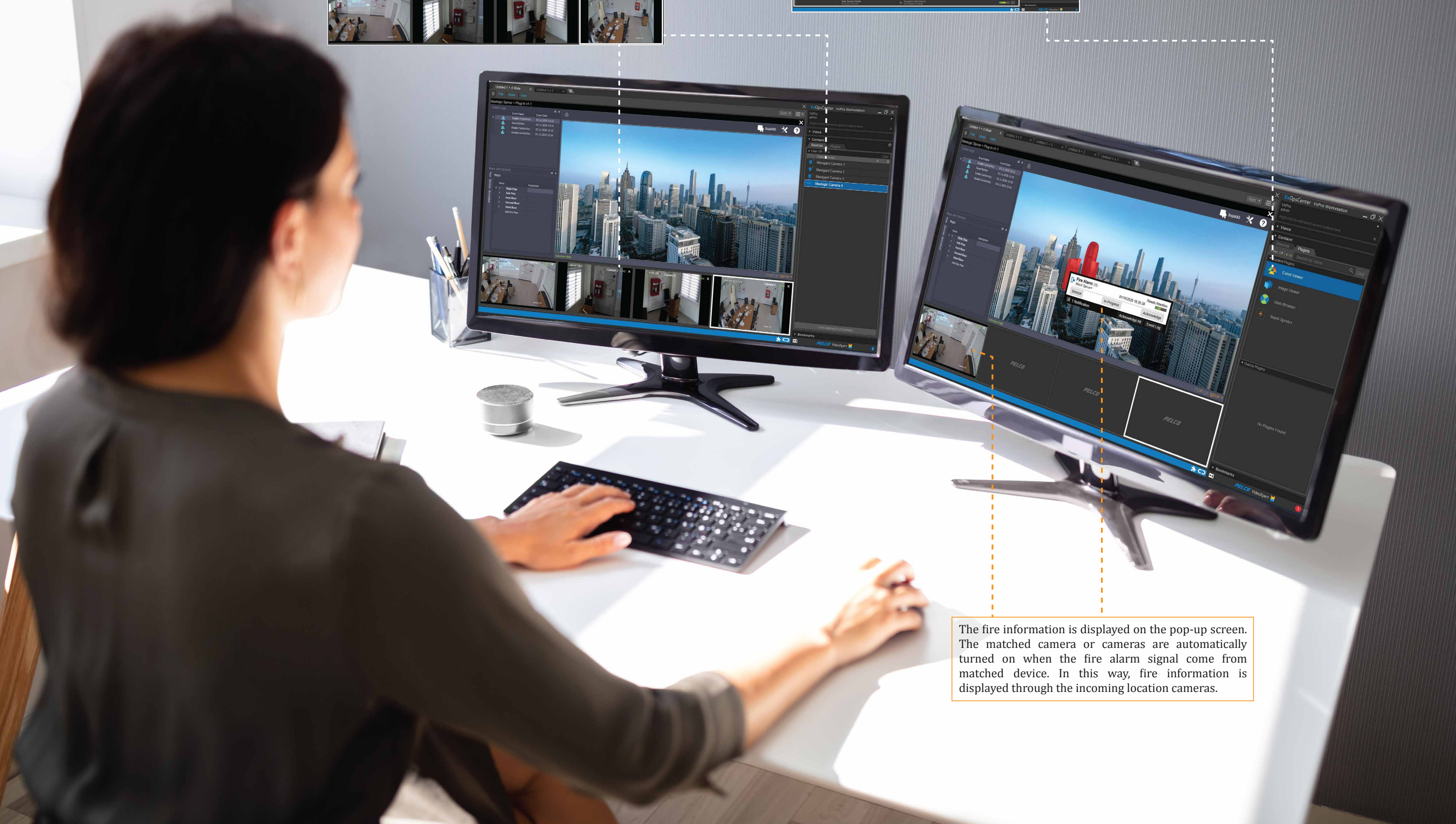
maxlogic & mavigard
fire and gas detection systems

At the bottom of the screen; In case of fire, there is an area to open the view of the cameras that are matched with the device where the fire alarm comes from. The camera view can be opened **automatically** or **manually**.

Instant photo recording of the image on the camera can be taken.. The image recorded by the camera can be moved forward and backward, as well as a specific date can be selected.

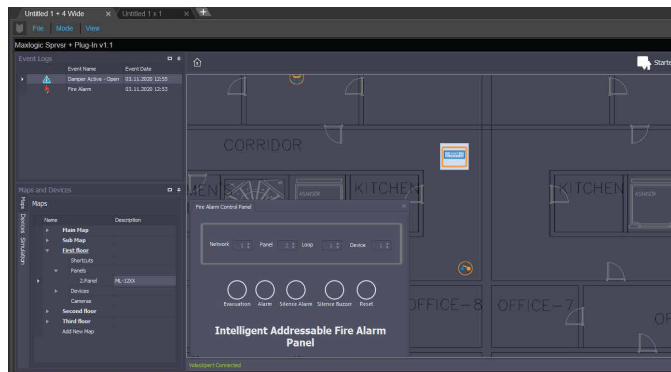
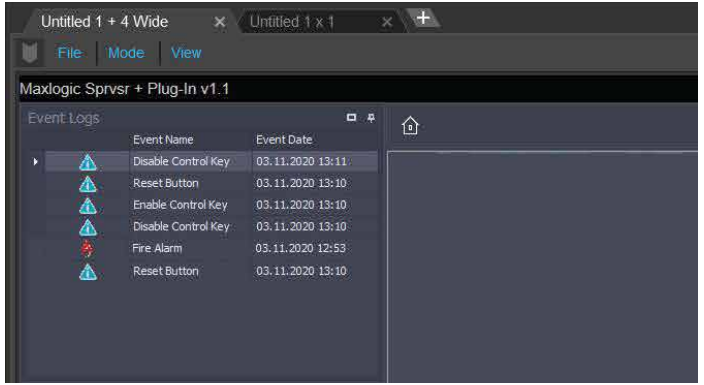


All plugins included in the software can be accessed from the **plugins** menu. Records of all events that occur in the system can be viewed through the **event viewer**. For these event records, filtering can be made according to different criteria such as date, time, event status and severity. By clicking on any event, detailed information of the event can be shown. The plug-in that the event came from; the type of the event, location information, device type and device address information are displayed.



The fire information is displayed on the pop-up screen. The matched camera or cameras are automatically turned on when the fire alarm signal come from matched device. In this way, fire information is displayed through the incoming location cameras.

Event records of the fire detection system are kept in the upper left corner. In these **event records**, all data such as opening the system, logging in and out, and interventions made to the systems are stored.



After the fire information is received, the system is intervened in two different ways.

- 1) Via the **Alarm, Silence Alarm, Silence Buzzer, and Reset** buttons in the Devices menu,
- 2) Other one is remote control operation by accessing the interface of the panel on the map.

As a result of the cooperation of Mavili and Pelco, **VideoXpert**, which integrates different systems, enables smart building management in a time-saving, direct and much more comfortable manner.



SOFTWARE MODELS

Product Code	Description
ML-1636	Maxlogic SPRVSR+ Plug-In Graphical Monitoring Software
ML-1634	Maxlogic SPRVSR+ Graphical Monitoring and Management Android Software
ML-1634.5	Maxlogic SPRVSR+ Graphical Monitoring and Management Android Software for 5 users
ML-1634.10	Maxlogic SPRVSR+ Graphical Monitoring and Management Android Software for 10 users
ML-1635	Maxlogic SPRVSR+ Graphic Monitoring and Management IOS Software
ML-1635.5	Maxlogic SPRVSR+ Graphic Monitoring and Management IOS Software for 5 users
ML-1635.10	Maxlogic SPRVSR+ Graphic Monitoring and Management IOS Software for 10 users

DONGLE MODELS

Product Code	Description
ML-1661.1	Maxlogic Sprvrs+ Master USB Dongle
ML-1661.2	Maxlogic Sprvrs+ Slave USB Dongle
ML-1661.3	Maxlogic Sprvrs+ Plug-In USB Dongle

