

PELCO VIDEOXPRT INTEGRATION 1.1

Technical guide

Revision 2

© 2020 ACIC sa/nv. All rights reserved.

Document history

Revision	Date	Comment
1	2019-10	First version.
2	2020-11	Update logo

Intended audience

This document is intended for people who are in charge of Pelco VideoXpert integration/installation with ACIC analytics software. It describes the different steps required to configure the overall system.

Getting technical support

You can ask questions and make product suggestions to ACIC by email at support@acic.eu. Please do not forget to include your contact information in your request.

Covered products

- Pelco VideoXpert system 3.6 or above
- ACIC Analytics software with Pelco VideoXpert support
- ACIC Pelco VideoXpert Service 1.0+

Table of contents

1	Introduction.....	4
2	ACIC VideoXpert Service installation and initial configuration	5
2.1	ACIC VideoXpert Service installation	5
2.1.1	Download the software	5
2.1.2	Software installation.....	5
2.1.3	Service configuration	7
3	ACIC VideoXpert video source configuration.....	8
3.1	Configuring ACIC video source link to VideoXpert.....	8
4	ACIC to VideoXpert events configuration	9
4.1	Analytics events output.....	9
4.1.1	Testing the ACIC events output.....	9

1 Introduction

Pelco VideoXpert is a Video Management System platform with which ACIC Video Analytics products can be integrated to stream videos and raise alarms. See <https://www.pelco.com> for further details about Pelco products.

The integration for ACIC video analytics and Pelco allows:

- sending the ACIC analytics events to Pelco

The integration is compatible with ACIC **server**-based solutions.

VideoXpert License:

The integration between ACIC and VideoXpert requires a specific Pelco VideoXpert license.

*The product reference is **INT-ACIC**, it must be ordered from your Pelco dealer.*

Without the license, the ACIC integration will not be able to connect to VideoXpert.

Chapter 2 explains how to install the service. The chapter 3 focuses on the setup of the video analytics application. In chapter 4, configuration on the VMS side is explained.

2 ACIC VideoXpert Service installation and initial configuration

ACIC VideoXpert Service is required to get video analytic events in Pelco VideoXpert.

2.1 ACIC VideoXpert Service installation

Versions 1.x of ACIC VideoXpert Service are compatible with Pelco VideoXpert 3.6 and above.

Note for offline installation: ACIC VideoXpert Service requires “Microsoft .NET Framework 4.6”.

2.1.1 Download the software

Download “ACIC VideoXpert Service” from the secure section of the ACIC website or get it from your ACIC solutions dealer.

2.1.2 Software installation

Start the installation and follow the installation wizard instructions.

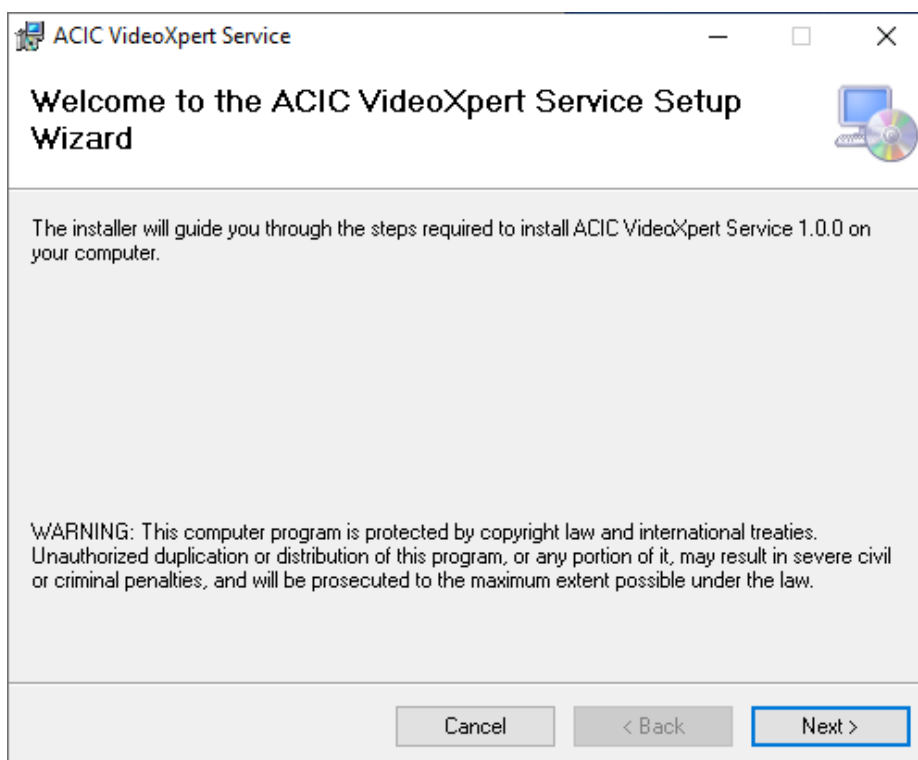


Figure 1 Software installation

For a standard installation, default parameters are adequate.

At the end of the installation, you can choose to start the following components:

- Service: The essential part of the software responsible for the acquisition and forwarding of the events to VideoXpert.
- Service monitoring: Graphical management tool to control (start/stop), configure, monitor current status and get logs of the service. This component is optional, but eases use and configuration of the service.

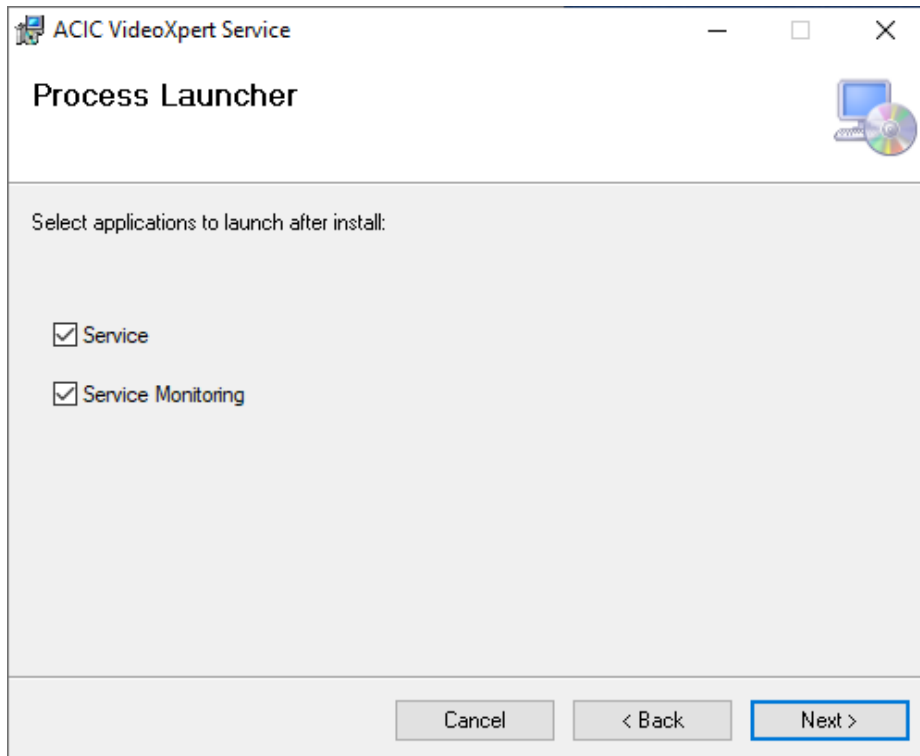


Figure 2 Components to start

When installation is done, an icon appears in the notification area. Right click on it to open the service management tool menu as illustrated in the following screenshot. When the icon is green, the service is started and if it is red the service is not running.

Note: you can also control the service like any other Windows service through the Windows control panel or services MMC.

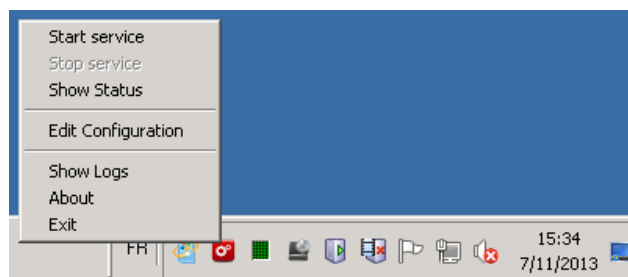


Figure 3 Service control

2.1.3 Service configuration

This step details the configuration of the gateway (ACIC VideoXpert Service) between ACIC Video Analytics and Pelco VideoXpert.

In the ACIC VideoXpert Service management tool, input the following information:

- In the VideoXpert section, provide the necessary credentials and host information to connect to the VideoXpert server.
- In the Analytics Servers section, declare the ACIC video analytics servers from which events will be pulled automatically by the service.
- In the Events section, check the Create bookmarks box if the ACIC VideoXpert Service should create bookmarks in VideoXpert upon event reception.

Once the configuration is complete and applied, start the service if it is not already running and check in the logs if the connection with VideoXpert is successful.

Note: The service must be configured to use an account with Administrator rights in VideoXpert to work correctly.

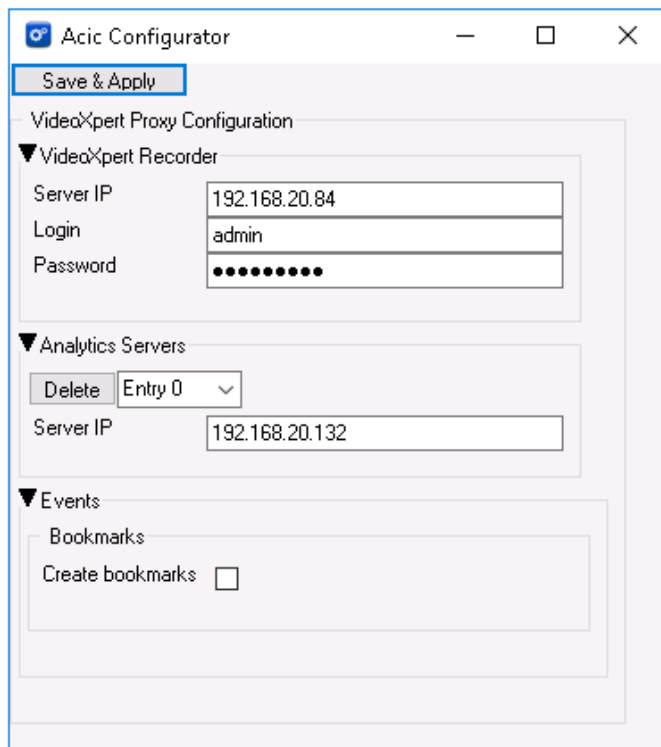


Figure 4 ACIC VideoXpert Service configuration

3 ACIC VideoXpert video source configuration

3.1 Configuring ACIC video source link to VideoXpert

Open MvConfigTool in a browser with the following URL: `http://<ip_address>`
Replace `<ip_address>` with the right IP address of your ACIC device. For each streams of your distribution¹ do the following steps:

Select the “camera” (2) sub-menu of the “System Setup” Tab (1) as shown below:

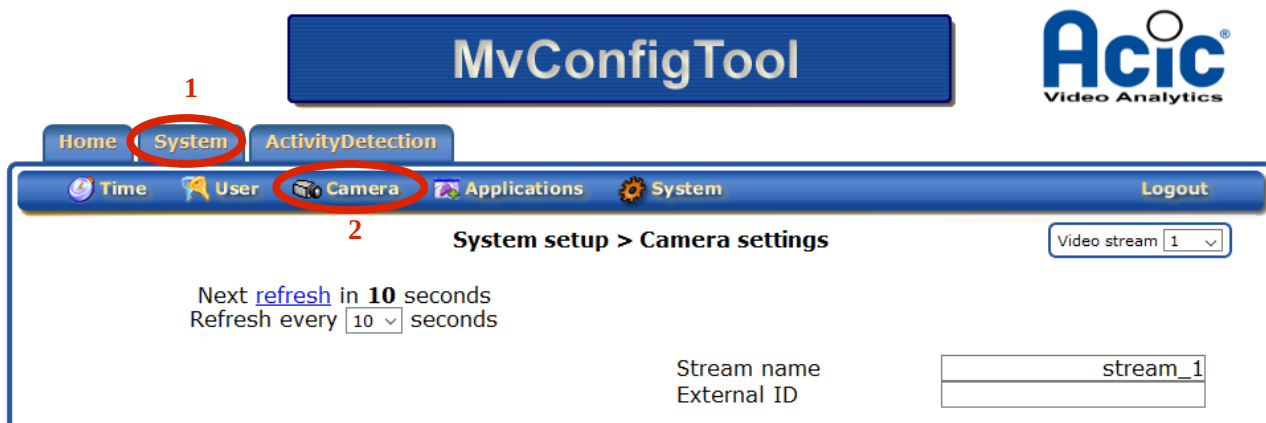


Figure 5 MvConfigTool, video source configuration

Configure the camera information as described in the ACIC MvConfigTool configuration document. Enter the VideoXpert camera GUID in the **External ID** field to link the events from this stream to the camera in VideoXpert.

¹ The stream index is selectable through the upper right selector named 'Video stream' of the top of the page.

4 ACIC to VideoXpert events configuration

This paragraph describes how to link ACIC's outputs (events) with VideoXpert.

4.1 Analytics events output

There is no additional configuration needed in ACIC Video Analytics servers. The events are automatically acquired for all the servers listed in the “Analytics Servers” section of the ACIC VideoXpert Service.

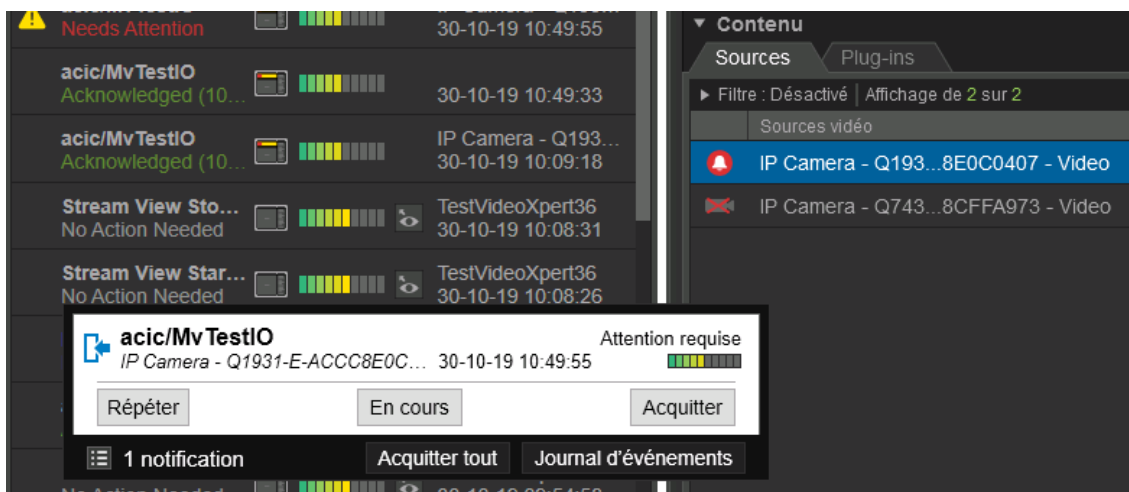


Figure 6 Events in VxOpsCenter

4.1.1 Testing the ACIC events output

To validate the reception of events in VideoXpert, open VxOpsCenter and add an Event Viewer tile. The ACIC test event may be generated on demand through the output page by clicking the Apply button under **Generate an Outputs Test**.

The event is received and displayed in the Event Viewer tile, linked to a specific camera if the **External ID** field for the stream contains a valid camera GUID. If there is no linked camera, the event is global.



Figure 7 Testing the events outputs