



**VideoXpert™ v 3.x**  
**Event Monitor Configuration Tool**  
**Installation and Operations Manual**



VideoXpert™

**Document number:** C6682M-A

**Publication date:** 10/20

## Table of Contents

Introduction .....	4
Overview .....	5
Installing the Software .....	6
Using the Service Settings Page .....	7
Configuring the VideoXpert System™ .....	7
Configuring the Halo Listener Settings .....	8
Viewing and Configuring the Event Monitor Service Settings .....	9
Using the Alarm Configuration Page .....	11
Configuring Alarm Devices .....	11
Creating an Alarm Device .....	11
Configuring Alarm Settings [Auto Generation] .....	12
Configuring Alarm Situation and Command Settings [Auto Generation] .....	13
Editing an Alarm Device .....	16
Deleting an Alarm Device .....	16
Configuring Alarms .....	17
Creating an Alarm .....	17
Editing an Alarm .....	17
Duplicating an Alarm .....	18
Deleting an Alarm .....	18
Configuring Alarm States .....	18
Viewing and Editing Alarm State settings .....	18
Creating a Situation Type .....	18
Selecting a Situation Type .....	19
Adding a Property .....	19
Editing a Property .....	19
Deleting a Property .....	20
Configuring the Time Filter .....	20
Configuring Commands .....	20
Custom Situations .....	21
Creating a Custom Situation .....	21
Editing a Custom Situation .....	22
Duplicating a Custom Situation .....	22
Deleting a Custom Situation .....	22
Subscriptions .....	24
Creating a Subscription .....	24
Editing a Subscription .....	25
Duplicating a Subscription .....	25
Deleting a Subscription .....	25
Adding a Property .....	25
Editing a Property .....	26

## VideoXpert™ v 3.x Event Monitor Configuration Tool Installation and Operations Manual

Deleting a Property .....	26
Configuring the Time Filter .....	26
Configuring Commands .....	27
Using Commands .....	28
Creating a Command .....	28
Duplicating a Command .....	29
Deleting a Command .....	29
Locating Logs .....	30
Pelco Troubleshooting Contact Information .....	31
Version Information .....	32
Configuration Tool Version .....	32
Event Monitor Service Version .....	32

## **Introduction**

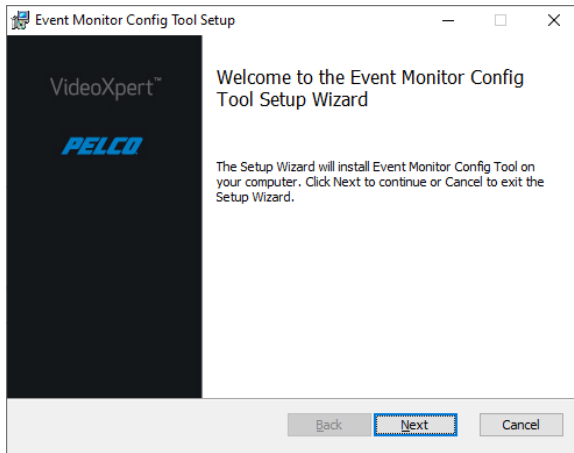
This document is the installation and operation guide for the Event Monitor Configuration Tool.

## Overview

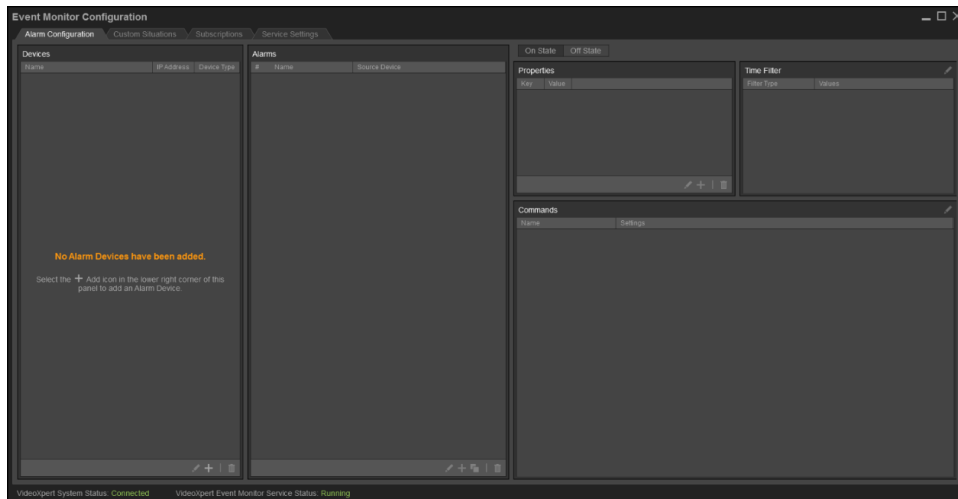
You can configure the VideoXpert Event Monitor Service, through various XML files, to poll for alarms from various devices, taking the alarm data it gathers and performing various actions when an alarm state change occurs. Use the Event Monitor Configuration Tool to configure these various XML configuration files through a user interface.

## Installing the Software

1. Install the prerequisite, “Microsoft Visual C++ Redistributable for Visual Studio 2015 x64” .
2. Download and run the installer.
3. Click **Next** as necessary to complete the installation process.

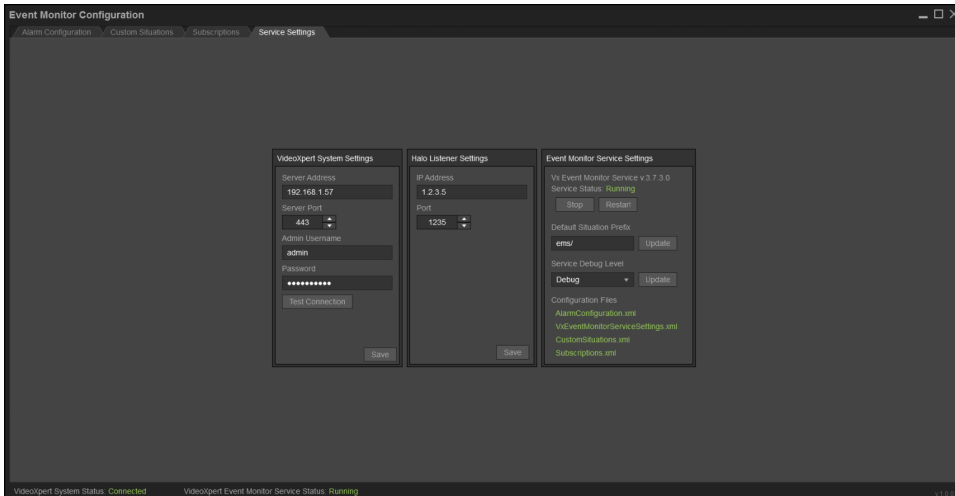


4. Launch the Event Monitor Configuration Tool application to verify that the installation was successful.



## Using the Service Settings Page

The *Service Settings* page contains the connection and general settings for the VideoXpert Event Monitor Service.



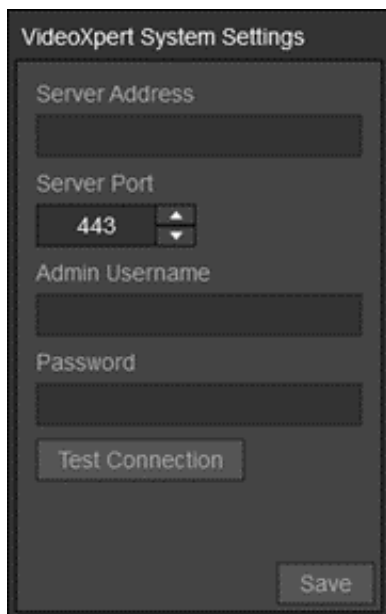
## Configuring the VideoXpert System™



The VideoXpert Event Monitor Service™ requires a VideoXpert System™ to be configured. Before configuring the system, make sure you have network access to the system and that your user account has been assigned to the administrative role. After it is configured, the Event Monitor Configuration Tool will use the system to populate various configuration options.



**Note:** If the system is unavailable, you can still modify the configuration options. However, you will need to manually enter all values as needed.

1. Click the **Service Settings** tab.
2. Enter an IP address in the *Server Address* field of the *VideoXpert System Settings* panel.



3. Enter a value in the *Server Port* field or use the default port.
4. Enter the *Admin Username* and *Password* for the VideoXpert System.
  - a. If the connection succeeds, the user will see the “Connection Successful” message.
  - b. If the connection succeeds, and the system does not have a license but is still under the grace period, the user will see the “Connection Successful” message and the icon .
  - c. If the connection failed, the user will see the “Connection Failed” message.
  - d. If the connection failed due to an expired license, the user will see the “Connection Failed” message and the icon .
5. Click **Save** to save the current settings to the configuration file.



**Note:** If the information is correct, but the System will not respond, you can save this information and try again later.

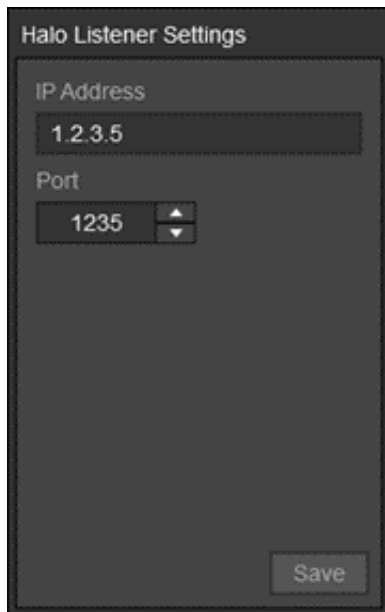
6. Restart the VideoXpert Event Monitor Service to apply the changes.

### Configuring the Halo Listener Settings

Halo devices must be programmed through the Halo Web UI to send events to the IP address and port set in the Halo Listener Settings panel. Refer to the VideoXpert Event Monitor Service documentation for more details.



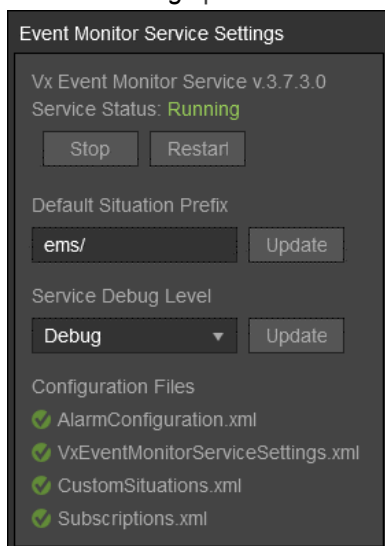
1. Click the **Service Settings** tab.
2. Enter an IP address in the *IP Address* field of the *Halo Listener Settings* panel.



3. Enter a value in the *Port* field or use the default port.
4. Click **Save** to save the current settings to the configuration file.
5. Restart the VideoXpert Event Monitor Service to apply the changes.

## Viewing and Configuring the Event Monitor Service Settings

1. Click the **Service Settings** tab.  
Information specific to the VideoXpert Event Monitor Service is presented in the *Event Monitor Service Settings* panel.



- The **Service Status** at the top of the panel displays the current status of the VideoXpert Event Monitor Service.

## VideoXpert™ v 3.x Event Monitor Configuration Tool Installation and Operations Manual

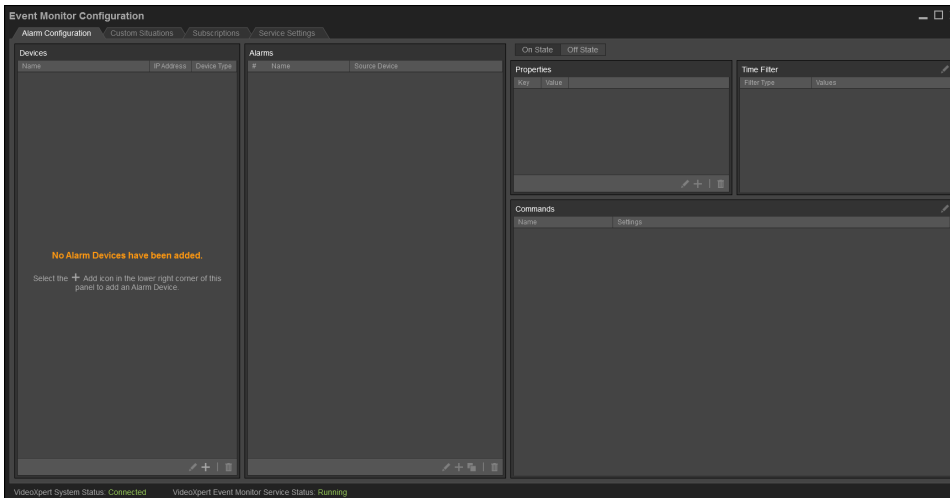
- The *Configuration Files* section at the bottom of the panel displays a list of the configuration files supported by the VideoXpert Event Monitor Service. The status of each file is indicated by the following colors:
    - Checkmark (✓): The file has been located and loaded into the tool.
    - Slashed circle (⊗): The file could not be found and will be created by the tool when an associated setting is saved.
2. (Optional) Click **Stop** to stop the VideoXpert Event Monitor Service from running.
  3. (Optional) Click **Start** or **Restart** to (re)start the VideoXpert Event Monitor Service.
  4. (Optional) Enter a *Default Situation Prefix*, and then click **Update**. The value set here will automatically be added to the *Situation Type* field in the *Create a new Custom Situation* dialog box.
  5. (Optional) Click to select the *Service Debug Level* from the drop-down menu, and then click **Update**.



**Note:** To see the output, turn off the service, and then start the service from the command line or from Windows Explorer.

## Using the Alarm Configuration Page

The *Alarm Configuration* page allows you to view and configure alarm devices. Each alarm device contains a collection of *Alarms*, each with their own set of configuration options that define what to do when an alarm changes state.



## Configuring Alarm Devices

### Creating an Alarm Device

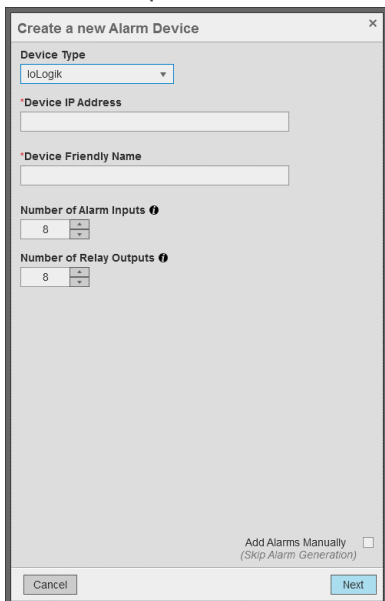
When creating a new *Alarm Device*, you can generate *Alarms* for the device manually or automatically .

- If you choose to add *Alarms* manually, the *Alarm Device* will be created without any *Alarms*. The *Alarms* may then be added and configured on an individual basis as needed.
- If you choose to automatically generate the *Alarms*, the *Create a new Alarm Device* dialog box will guide you through the auto generation process. This process will allow you to set up templates for each *Alarm* that will be used to create them. This allows you to quickly generate multiple preconfigured *Alarms* for the new *Alarm Device*. After they have been generated, the *Alarms* can be modified on an individual basis as needed.

To create new alarms:

1. Click the **Alarm Configuration** tab.
2. Click the **+** icon on the lower right corner of the *Devices* panel to open the *Create a new Alarm Device* dialog box.

- From the drop-down menu, click to select the *Device Type* of the *Alarm Device* you are adding.

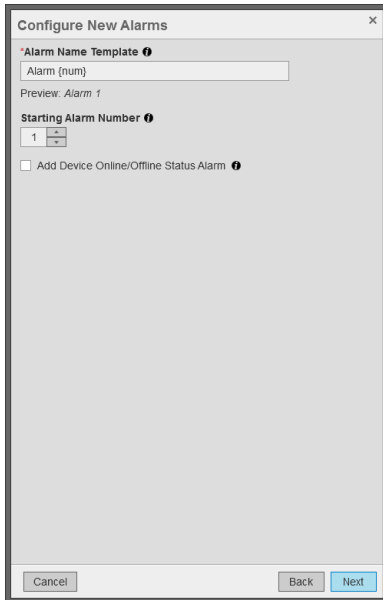


- Enter the *Device IP Address* of the *Alarm Device*.
- Enter the *Device Friendly Name* that will be used to identify the *Alarm Device*.
- Enter the *Number of Alarm Inputs* the *Alarm Device* is able to or configured to support (default is 8).
- Enter the *Number of Relay Outputs* the *Alarm Device* is able to or configured to support (default is 8).
- (Maxibus) Enter the *Starting Address of Digital Inputs* (default is 1).
- (Maxibus) Enter the *Starting Address of Digital Outputs* (default is 17).
- (Maxibus) Enter the *Modbus Unit Identifier* of the device (default is 48).
- (Maxibus) Enter the *Holding Registers Starting Address* (default is 36966).
- Click to select the checkbox for *Add Alarms Manually* to add *Alarms* to the *Alarm Device* manually, and then to one of the following:
  - Click **Save**.
  - Click **Next** to continue to configure the auto generation of *Alarms*.

### Configuring Alarm Settings [Auto Generation]

Follow the instructions in the section titled *Creating an Alarm Device*, and then continue with these steps.

- Enter a value to use as the Alarm Name Template which will be used for the auto generated Alarms. The variables {num} and {device} may be used, which will be substituted for the Input Number and Device Friendly Name respectively. The Preview text will display an example of the names that will be generated.

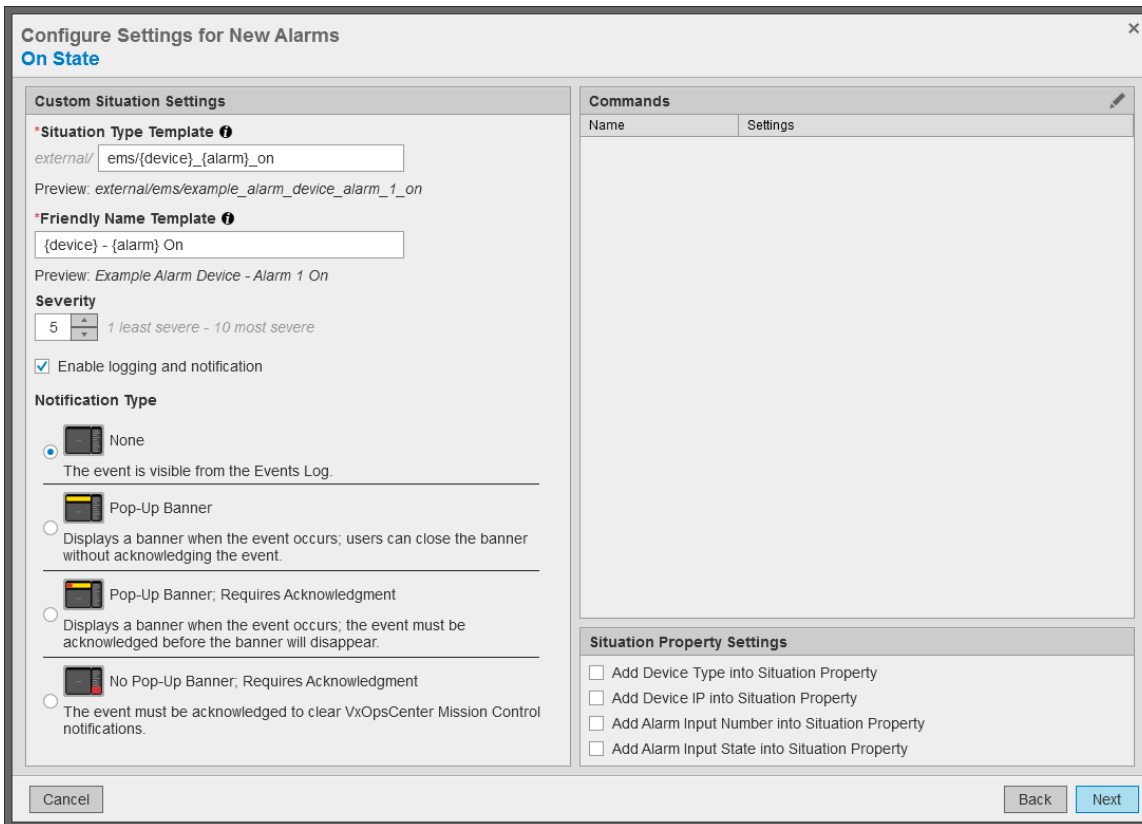


2. Enter the Starting Alarm Number for the auto generated Alarms. The first Alarm will use the value provided and subsequent alarms will be numbered sequentially from this value.
3. Click to select or deselect the checkbox for Add Device Online/Offline Status Alarm to determine whether a special alarm for when the Alarm Device itself is not communicating should also be generated.
4. Click Next to continue. See the section titled [Configuring Alarm Situation and Command Settings \[Auto Generation\]](#).

## Configuring Alarm Situation and Command Settings [Auto Generation]

Follow the instructions in the section titled [Configuring Alarm Settings \[Auto Generation\]](#), and then continue with these steps.

There are two alarm states for each alarm, one for **On State** and one for **Off State**. The following steps define the situation to inject into VideoXpert and a set of commands for a given alarm state.



1. Enter a string in the *Situation Type Template* field to use to identify the *Custom Situations* that will be auto generated for each alarm.

The situation type categorizes and uniquely identifies the source of an event within VideoXpert. The variables {num}, {alarm}, and {device} can be substituted for the alarm number, alarm name and alarm device name respectively. The *Preview* text displays an example of the situation types that will be generated.




**Note:** The *Situation Type Template* entry must be in the format; “external/<integration>/<event>” where <integration> and <event> are values no greater than 64 characters each; forward slashes, spaces, and special characters are not allowed. These values describe the integration that was the source of the event (for example: external/event\_monitor\_service/alarm\_1\_on).”

2. Enter a string in the *Friendly Name Template* field for the *Custom Situations* that will be auto generated for each alarm.  
The friendly name is how VideoXpert will represent the event for each situation. The variables {num}, {alarm}, and {device} can be substituted for the alarm number, alarm name and alarm device name respectively. The *Preview* text displays an example of the names that will be generated.
3. Enter the *Source Device ID* or select a *Source Device* for the custom situation.




**Caution:** If specified, any events matching the *Situation Type* must also match this source device in order for the situation to apply. This field may be left blank or may be defined in order to act as an optional constraint on the source of events for this situation.

4. Click to select or deselect the checkbox for *Use the Integration ID*. When checked, the service will automatically use the integration ID that has been assigned by the VideoXpert system as the ID of the source device.


5. Change the **Severity**, if necessary, either by typing-in a number or selecting one using the up and down arrows. The severity can help users determine whether they need to act on an event.
6. Click to select or deselect the checkbox for **Enable logging and notification** to determine whether VideoXpert will report the event. If you select **Enable logging and notification**, VideoXpert will report the event.
7. Click to select the radio button for the appropriate **Notification Type**.
8. If you selected **Pop-Up Banner**, configure these notification settings:
  - a. Scroll to the **Notification Details** section of the dialog box.
  - b. Click to select or deselect the checkbox for **Play Sound With Banner**.
  - c. In the **Auto-Acknowledge After** area (automatically selected, and cannot be deselected), type or select a number, and then select a unit of time (for example, **Minutes**) from the drop-down menu.
  - d. Click to select or deselect the checkbox for **Do Not Hide Cell Alerts**. Events associated with individual video sources provide alerts within VxOpsCenter cells; these alerts hide after three seconds. Select this option to prevent the alert from hiding.
9. If you selected **Pop-Up Banner; Requires Acknowledgment**, configure these notification settings:
  - a. Scroll to the **Notification Details** section of the dialog box.
  - b. Click to select or deselect the checkbox for **Play Sound With Banner**.
  - c. (Optional) Click to select the checkbox for **Auto-Acknowledge After**, type or select a number, and then select a unit of time (for example, **Minutes**) from the drop-down menu.
  - d. (Optional) Click to select the checkbox for **Allow Snooze (And Set Snooze Time)**, and then click the checkboxes to select and deselect the available intervals.
  - e. Click to select or deselect the checkbox for **Do Not Hide Cell Alerts**. Events associated with individual video sources provide alerts within VxOpsCenter cells; these alerts hide after three seconds. Select this option to prevent the alert from hiding.
10. If you selected **No Pop-Up Banner; Requires Acknowledgment**, configure these notification settings:
  - a. Scroll to the **Notification Details** section of the dialog box.
  - b. Click to select or deselect the checkbox for **Play Sound With Banner**.
  - c. (Optional) Click to select or deselect the checkbox for **Auto-Acknowledge After**. If you selected **Auto-Acknowledge After**, type or select a number, and then select a unit of time (for example, **Minutes**) from the drop-down menu.
  - d. Click to select or deselect the checkbox for **Do Not Hide Cell Alerts**. Events associated with individual video sources provide alerts within VxOpsCenter cells; these alerts hide after three seconds. Select this option to prevent the alert from hiding.
11. (Optional) Click the  icon in the **Commands** panel to open the **Edit Commands** dialog box. Any **Commands** added will be applied to each auto generated alarm. Refer to the section titled [Using Commands](#) for details.
12. (Optional) Click to select the checkbox for **Add Device Type into Situation Property** to add a device type property to each auto generated alarm. Events generated by the situation will contain the type of the alarm device as a property (for example: **Device Type: Halo**).

13. (Optional) Click to select the checkbox for *Add Device IP into Situation Property* to add a device IP property to each auto generated alarm. Events generated by the situation will contain the IP address of the alarm device as a property (for example: *Device Ip: 192.168.1.0*).
14. (Optional) Click to select the checkbox for *Add Alarm Input Number into Situation Property* to add an input number property to each auto generated alarm. Events generated by the situation will contain the alarms input number as a property (for example: *Input Number: 3*).
15. (Optional) Click to select the checkbox for *Add Alarm Input State into Situation Property* to add an input state property to each auto generated alarm. Events generated by the situation will contain the alarms input state as a property (for example: *Input State: On*).
16. Click **Next**, and then repeat steps 1-14 to configure the alarms to generate when they are in the *Off State*.
17. Click **Save** to create the *Alarm Device* and auto generate the alarms.

### Editing an Alarm Device

1. Click the **Alarm Configuration** tab.
2. Click to select the *Alarm Device* to edit from the *Devices* panel.
3. Click the  icon on the lower right corner of the *Devices* panel.
4. In the *Edit the Alarm Device* dialog box, change the *Alarm Device* settings as needed.
5. For detailed instructions, see the section titled [Creating an Alarm Device](#).
6. Click **Save**.

### Deleting an Alarm Device

1. Click the **Alarm Configuration** tab.
2. Select the *Alarm Device* to delete from the *Devices Panel*.
3. Click the  icon on the lower right corner of the *Devices* panel to open the *Delete Alarm Device* dialog box.
4. (Optional) Click to select or deselect the checkbox for *Delete the associated Custom Situation(s)?*. Select this option to delete the *Custom Situation(s)* assigned to the *Alarms* contained by the selected *Alarm Device* from the configuration.



**Note:** Selecting this option will delete the *Custom Situations* from the service configuration only. Any situations that have already been added to the system will remain on the system (unless the option below is selected). Also, if a *Custom Situation* is shared between *Alarms* on different *Alarm Devices* it will not be removed from the service configuration or the VideoXpert System.

5. (Optional) Click to select or deselect the checkbox for *Also delete from the VideoXpert System?*. Select this option to also attempt to delete the associated *Custom Situation(s)* from the VideoXpert system.



**Note:** Selecting this option will attempt to delete all of the *Custom Situations* from the connected VideoXpert system. If the system is not connected when this action is performed the *Custom Situations* might be put into an “abandoned” state on the system.

6. Click **OK**.



## Configuring Alarms

### Creating an Alarm

1. Click the **Alarm Configuration** tab.
2. Click the **+** icon on the lower right corner of the *Alarms* panel to open the *Create a new Alarm* dialog box.

3. Enter the *Alarm Friendly Name* that will be used to identify the alarm.
4. Enter the *Alarm Number* to associate with the alarm.
5. Click to select or deselect the checkbox for *Device Online/Offline Status Alarm*. Select this option to set the new alarm as a special alarm for when the alarm device itself is not communicating.



**Note:** There can only be one status alarm per alarm device; it defaults to using 0 as its *Alarm Number*.


6. Enter the *Source Device* ID or select a *Source Device* to associate with the alarm. For a predefined situation, this is the camera to associate with the alarm when injecting an event into VideoXpert.
7. Click to select or deselect the checkbox for *Use the Integration ID*. When checked, the service will automatically use the integration ID that has been assigned by the VideoXpert system as the ID of the *Source Device*.



**Note:** Select *Use the Integration ID* for a custom situation.


8. (Maxibus) Enter the *Modbus Register Address* at which the alarm resides.
9. (Maxibus) Enter the *BitMask* to be applied to the values read from the holding registers to indicate alarm.
10. Click **Save Changes**.

### Editing an Alarm


1. Click the **Alarm Configuration** tab.
2. Click to select the *Alarm* to edit from the *Alarms* panel.
3. Click the  icon on the lower right corner of the *Alarms* panel.

4. In the *Edit the Alarm* dialog box, change the alarm settings as needed.
5. For detailed instructions, see the section titled [Creating an Alarm](#).
6. Click **Save Changes**.

### Duplicating an Alarm


1. Click the **Alarm Configuration** tab.
2. Click to select the alarm to duplicate from the *Alarms* panel.
3. Click the  icon on the lower right corner of the *Alarms* panel.
4. Enter a new number for the duplicated alarm and change the other alarm settings as needed.
5. For detailed instructions, see the section titled [Creating an Alarm](#).
6. Click **Save Changes**.

### Deleting an Alarm

1. Click the **Alarm Configuration** tab.
2. Select the alarm to delete from the *Alarms* panel.
3. Click the  icon on the lower right corner of the *Alarms* panel to open the *Delete Alarm [Number]* dialog box.
4. Click **OK**.

### Configuring Alarm States

Each alarm can be configured to perform different actions based its state, one for Active/On/Online and one for Inactive/Off/Offline. Each state contains the following settings:

- Situation Type: The situation that will be used to inject an event into VideoXpert when the alarm changes to the defined state.
- Properties: A list of key/value pairs that will be added to the events injected into VideoXpert.  
 **Note:** Property keys for predefined situation types are predefined and must not be changed. External situations allow for adding user-defined properties.
- Commands: A list of actions that will take place when the alarm changes to the defined state.
- Time Filter: The time at which the alarm is valid. If no filters are defined, the alarm is always valid. If any of the filters are defined, the time of the alarm event will be checked against the current local time and only those alarms occurring within the *Time Filter* will trigger.

### Viewing and Editing Alarm State settings

1. Click the **Alarm Configuration** tab.
2. Click to select the *Alarm* to edit from the *Alarms* panel.
3. Click **On State** or **Off State** in the upper right corner of the *Alarm Configuration* page to select the alarm state to view or edit.



### Creating a Situation Type

1. Click the **Alarm Configuration** tab.
2. Click to select the *Alarm* to edit from the *Alarms* panel.


3. Click **State** or **Off State** in the upper right corner of the *Alarm Configuration* page to select the *Alarm* state to edit.
4. Click the **+** icon in the upper right corner of the *Alarm Configuration* page next to the *Situation Type* label.



**Note:** The **+** icon is only present when a situation has not been assigned to the alarm in the defined state. In this case, a new *Custom Situation* may be created from the *Custom Situations* page. See the section titled [Creating a Custom Situation](#). After it is created, the new Custom Situation can be selected. See the section titled [Selecting a Situation Type](#).

5. In the *Create a new Custom Situation* dialog box, change the situation settings as needed.
6. For detailed instructions, see the section titled [Creating a Custom Situation](#).
7. Click **Save Changes**.

### Selecting a Situation Type


1. Click the **Alarm Configuration** tab.
2. Click to select the *Alarm* to edit from the *Alarms* panel.
3. Click **State** or **Off State** in the upper right corner of the *Alarm Configuration* page to select the *Alarm* state to edit.
4. Click the  icon in the upper right corner of the *Alarm Configuration* page next to the *Situation Type* label.
5. In the *Select the Event for the Alarm* dialog box, select the *Situation* to assign to the alarm in the defined state.
6. Click **Save Changes**.

### Adding a Property

A list of properties, which are key/value pairs, may be configured for the Situation Type in the defined state. These properties will be added to the events when they are injected into the VideoXpert System. Property keys for predefined Situation types are predefined and must not be changed. Use External situations to add user-defined properties.


1. Click the **Alarm Configuration** tab.
2. Click to select the *Alarm* to edit from the *Alarms* panel.
3. Click **State** or **Off State** in the upper right corner of the *Alarm Configuration* page to select the *Alarm* state to edit.
4. Click the **+** icon on the lower right corner of the *Properties* panel.
5. Enter a *Key* for the new property.
6. Enter a *Value* for the new property.
7. Click **Save Changes**.

### Editing a Property

1. Click the **Alarm Configuration** tab.
2. Click to select the *Alarm* to edit from the *Alarms* panel.
3. Click **State** or **Off State** in the upper right corner of the *Alarm Configuration* page to select the *Alarm* state to edit.
4. Click to select the property to edit from the *Properties* panel.
5. Click the  icon on the lower right corner of the *Properties* panel.


6. In the *Edit the Situation Property* dialog box, change the *Key* and *Value* settings as needed.
7. Click **Save Changes**.

### Deleting a Property

1. Click the **Alarm Configuration** tab.
2. Click to select the *Alarm* to edit from the *Alarms* panel.
3. Click **State** or **Off State** in the upper right corner of the *Alarm Configuration* page to select the *Alarm* state to edit.
4. Click to select the property to edit from the *Properties* panel.
5. Click the  icon on the lower right corner of the *Properties* panel to open the *Delete [Name]* dialog box.
6. Click **Delete**.

### Configuring the Time Filter

Use time filters to restrict the time at which an alarm is valid. If not set, the alarm will always be considered valid. If any value of the time filter is defined, the time of the alarm will be checked against the current local time, and only those alarms occurring within the time filter will trigger actions.


1. Click the **Alarm Configuration** tab.
2. Click to select the *Alarm* to edit from the *Alarms* panel.
3. Click **State** or **Off State** in the upper right corner of the *Alarm Configuration* page to select the *Alarm* state to edit.
4. Click the  icon in the *Time Filter* panel to open the *Edit the Time Filter* dialog box.
5. Click to select the checkbox for *Time of Day* to define daily start and end times for the match to occur. When enabled, incoming events are considered valid only if they are received within the selected start and end time.
6. Click to select the checkbox for *Days of the Week* to define the days of the week for the match to occur. When enabled, incoming events are considered valid only if they are received on one of the selected days.
7. Click to select the checkbox for *Days of the Month* to define the days of the month for the match to occur. When enabled, incoming events are considered valid only if they are received on one of the selected days of the month.



**Note:** Defining both *Days of the Week* and *Days of the Month* simultaneously is allowed, but this combination of filters might cause unexpected results.

8. Click **Save Changes**.

### Configuring Commands

1. Click the **Alarm Configuration** tab.
2. Click to select the *Alarm* to edit from the *Alarms* panel.
3. Click **State** or **Off State** in the upper right corner of the *Alarm Configuration* page to select the *Alarm* state to edit.
4. Click the  icon in the *Commands* panel to open the *Edit Commands for Situation* dialog box.
5. In the *Edit Commands for Situation* dialog box, configure the commands as needed.
6. For detailed instructions, see the section titled [Using Commands](#).
7. Click **Save Changes**.

## Custom Situations

The *Custom Situations* page allows you to view and define custom situations, referred to as external situations, and assign the created external situation type into an alarms situation type in the *Alarm Configuration* page.




**Note:** It is possible to modify external situation properties within VxToolbox, but these settings will be overwritten by the settings within the *Custom Situations* page each time the service restarts.

### Creating a Custom Situation

1. Click the **Custom Situations** tab.
2. Click the **+** icon on the lower right corner of the *Situations* panel to open the *Create a new Custom Situation* dialog box.
3. Enter a *Situation Type* for the custom situation. The *Situation Type* categorizes and uniquely identifies the source of an event within VideoXpert.




**Note:** The situation type must be in the format; “external/<integration>/<event>” where <integration> and <event> are values no greater than 64 characters each; forward slashes, spaces and special characters are not allowed. These values describe the integration that was the source of the event (for example: external/event\_monitor\_service/alarm\_1\_on).”


4. Enter a *Friendly Name* for the custom situation. The *Friendly Name* is how VideoXpert will represent the event.
5. Enter the source device ID or select a *Source Device* for the custom situation.
  -  **Caution:** If specified, any events matching the *Situation Type* must also match this *Source Device* in order for the situation to apply. This field may be left blank or may be defined in order to act as an optional constraint on the source of events for this situation.
6. Click to select or deselect the checkbox for *Use the Integration ID*. When checked, the service will automatically use the integration ID that has been assigned by the VideoXpert system as the ID of the source device.
7. Change the *Severity*, if necessary, either by typing-in a number or selecting one using the up and down arrows. The severity can help users determine whether they need to act on an event.
8. Click to select or deselect the checkbox for *Enable logging and notification* to determine whether VideoXpert will report the event. If you select *Enable logging and notification*, VideoXpert will report the event.
9. Click to select the radio button for the appropriate *Notification Type*.
10. If you selected *Pop-Up Banner*, configure these notification settings:
  - a. Scroll to the *Notification Details* section of the dialog box.
  - b. Click to select or deselect the checkbox for *Play Sound With Banner*.
  - c. In the *Auto-Acknowledge After* area (automatically selected, and cannot be deselected), type or select a number, and then select a unit of time (for example, **Minutes**) from the drop-down menu.
  - d. Click to select or deselect the checkbox for *Do Not Hide Cell Alerts*. Events associated with individual video sources provide alerts within VxOpsCenter cells; these alerts hide after three seconds. Select this option to prevent the alert from hiding.

11. If you selected *Pop-Up Banner; Requires Acknowledgment*, configure these notification settings:
  - a. Scroll to the *Notification Details* section of the dialog box.
  - b. Click to select or deselect the checkbox for *Play Sound With Banner*.
  - c. (Optional) Click to select the checkbox for *Auto-Acknowledge After*, type or select a number, and then select a unit of time (for example, **Minutes**) from the drop-down menu.
  - d. (Optional) Click to select the checkbox for *Allow Snooze (And Set Snooze Time)*, and then click the checkboxes to select and deselect the available intervals.
  - e. Click to select or deselect the checkbox for *Do Not Hide Cell Alerts*. Events associated with individual video sources provide alerts within VxOpsCenter cells; these alerts hide after three seconds. Select this option to prevent the alert from hiding.
12. If you selected *No Pop-Up Banner; Requires Acknowledgment*, configure these notification settings:
  - a. Scroll to the *Notification Details* section of the dialog box.
  - b. Click to select or deselect the checkbox for *Play Sound With Banner*.
  - c. (Optional) Click to select or deselect the checkbox for *Auto-Acknowledge After*. If you selected *Auto-Acknowledge After*, type or select a number, and then select a unit of time (for example, **Minutes**) from the drop-down menu.
  - d. Click to select or deselect the checkbox for *Do Not Hide Cell Alerts*. Events associated with individual video sources provide alerts within VxOpsCenter cells; these alerts hide after three seconds. Select this option to prevent the alert from hiding.
13. Click **Save Changes**.

### Editing a Custom Situation

1. Click the **Custom Situations** tab.
2. Click to select the custom situation to edit from the *Situations* panel.
3. Click the  icon on the lower right corner of the *Situations* panel.
4. In the *Edit the Alarm Device* dialog box, change the *Custom Situation* settings as needed.
5. For detailed instructions, see the section titled [Creating a Custom Situation](#).
6. Click **Save Changes**.


### Duplicating a Custom Situation

1. Click the **Custom Situations** tab.
2. Click to select the custom situation to duplicate from the *Situations* panel.
3. Click the  icon on the lower right corner of the *Situations* panel.
4. Enter a new *Situation Type* for the duplicated custom situation and change the other settings as needed.
5. For detailed instructions, see the section titled [Creating a Custom Situation](#).
6. Click **Save Changes**.

### Deleting a Custom Situation

1. Click the **Custom Situations** tab.
2. Select the custom situation(s) to delete from the *Situations* panel.

## VideoXpert™ v 3.x Event Monitor Configuration Tool Installation and Operations Manual

3. Click the  icon on the lower right corner of the *Situations* panel to open the *Delete Custom Situation(s)* dialog box.
4. (Optional) Click to select or deselect the checkbox for *Also delete from the VideoXpert System?*. Select this option to also attempt to delete the associated custom situation(s) from the VideoXpert system.

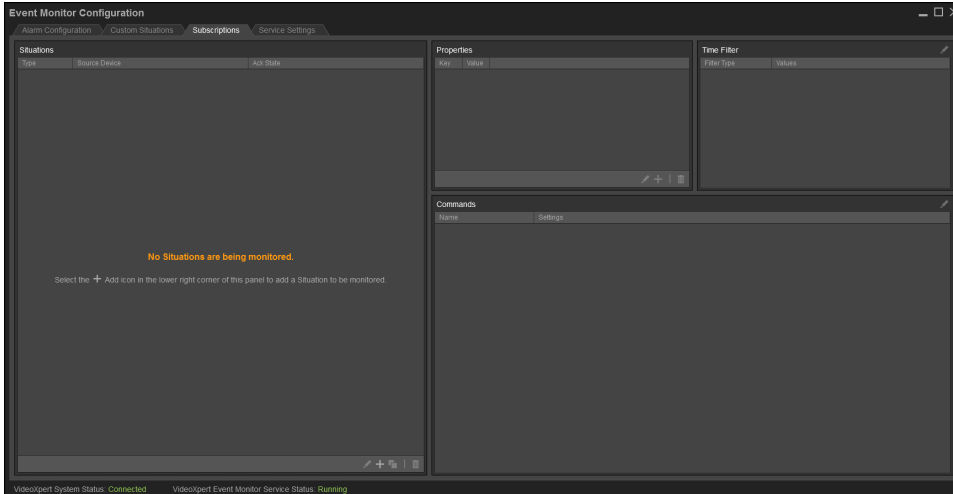


**Note:** Selecting this option will attempt to delete all of the selected custom situations from the connected VideoXpert system. If the system is not connected when this action is performed the custom situations might be put into an “abandoned” state on the system.

5. Click **OK**.

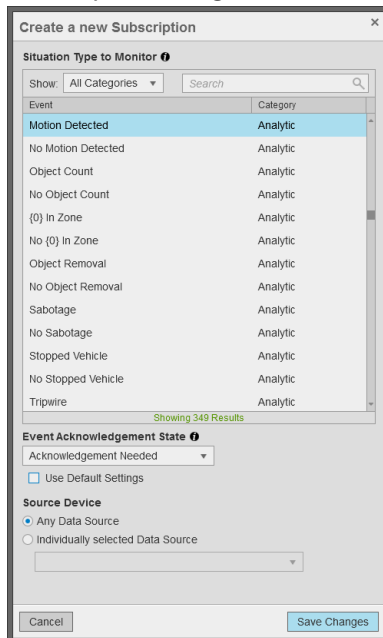
## Subscriptions

You can configure the Event Monitor Service to listen for specific VideoXpert events and react to the occurrence of these events by executing associated commands.



### Creating a Subscription

1. Click the **Subscriptions** tab.
2. Click the **+** icon on the lower right corner of the *Monitored Situations* panel to open the *Create a new Subscription* dialog box.




3. Select the *Situation Type to Monitor*. All events of the selected type will be subscribed to by the service.




4. Select the *Event Acknowledgment State*. If *Use Default Settings* is unchecked, any events matching the selected *Situation Type to Monitor* must also match this *Event Acknowledgment State*.
5. Click to select or deselect the checkbox for *Use Default Settings*. When checked, events will be matched using the default settings (*Acknowledgment Needed* or *No Acknowledgement Needed*).
6. Click to select the radio button for the appropriate *Source Device*.
7. Select *Any Device* to have the subscription match on any source device.
8. Select *Individually selected Device* to have the subscription match only on the selected source device.
9. Click **Save Changes**.


### Editing a Subscription

1. Click the **Subscriptions** tab.
2. Click to select the situation to edit from the *Monitored Situations* panel.
3. Click the  icon on the lower right corner of the *Monitored Situations* panel.
4. In the *Edit the Subscription* dialog box, change the situation settings as needed.
5. For detailed instructions, see the section titled [Creating a Subscription](#).
6. Click **Save Changes**.

### Duplicating a Subscription

1. Click the **Subscriptions** tab.
2. Click to select the situation to duplicate from the *Monitored Situations* panel.
3. Click the  icon on the lower right corner of the *Monitored Situations* panel.
4. Change the situation settings as needed.
5. For detailed instructions, see the section titled [Creating a Subscription](#).
6. Click **Save Changes**.

### Deleting a Subscription

1. Click the **Subscriptions** tab.
2. Select the situation to delete from the *Monitored Situations* panel.
3. Click the  icon on the lower right corner of the *Monitored Situations* panel to open the *Delete [Situation Type]* dialog box.
4. Click **Delete**.

### Adding a Property


Each situation event from VideoXpert will have a set of properties that can be used to filter incoming events. If specified, an event received for a monitored *Situation Type* must also have properties that match the properties defined for the subscription. This allows you to create multiple subscriptions using the same situation type but that execute different commands based on the properties.




**Note:** The *Key* specified in the subscription must be an exact match of a property *Key* in the received event. However, the *Value* specified in the subscription only needs to be contained within *Value* of the received event.

1. Click the **Subscriptions** tab.
2. Click to select the situation to edit from the *Monitored Situations* panel.
3. Click the **+** icon on the lower right corner of the *Properties* panel.
4. Enter a *Key* for the new property.
5. Enter a *Value* for the new property.
6. Click **Save Changes**.

### Editing a Property


1. Click the **Subscriptions** tab.
2. Click to select the situation to edit from the *Monitored Situations* panel.
3. Click to select the property to edit from the *Properties* panel.
4. Click the  icon on the lower right corner of the *Properties* panel.
5. In the *Edit the Situation Property* dialog box, change the settings as needed.
6. Click **Save Changes**.

### Deleting a Property

1. Click the **Subscriptions** tab.
2. Click to select the situation to edit from the *Monitored Situations* panel.
3. Click to select the property to edit from the *Properties* panel.
4. Click the  icon on the lower right corner of the *Properties* panel to open the *Delete [Name]* dialog box.
5. Click **Delete**.

### Configuring the Time Filter

Use time filters to define a valid time for the match to occur. If not set, any time the situation occurs it will be processed. If any value of the time filter is defined, the time of the event will be checked against the current local time, and only those events occurring within the time filter will trigger actions.


1. Click the **Subscriptions** tab.
2. Click to select the situation to edit from the *Monitored Situations* panel.
3. Click the  icon in the *Time Filter* panel to open the *Edit the Time Filter* dialog box.
4. Click to select the checkbox for *Time of Day* to define daily start and end times for the match to occur. When enabled, incoming events will only be considered valid if they are received within the selected start and end time.
5. Click to select the checkbox for *Days of the Week* to define the days of the week for the match to occur. When enabled, incoming events will only be considered valid if they are received on one of the selected days.
6. Click to select the checkbox for *Days of the Month* to define the days of the month for the match to occur. When enabled, incoming events will only be considered valid if they are received on one of the selected days of the month.



**Note:** Defining *Days of the Week* and *Days of the Month* simultaneously is allowed, but this combination of filters can have unexpected results.

7. Click **Save Changes**.

## Configuring Commands

1. Click the **Subscriptions** tab.
2. Click to select the situation to edit from the *Monitored Situations* panel.
3. Click the  icon in the *Commands* panel to open the *Edit Commands for Situation* dialog box.
4. In the *Edit Commands for Situation* dialog box, configure the commands as needed.
5. For detailed instructions, see the section titled [Using Commands](#).
6. Click **Save Changes**.

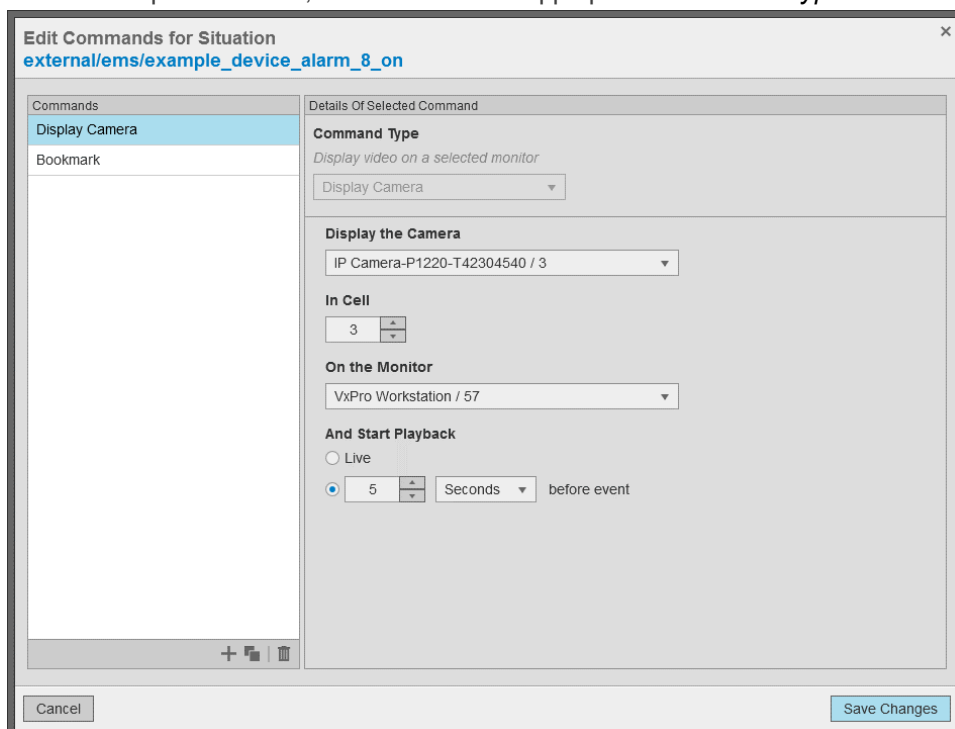
## Using Commands

Configure a list of commands for alarms and subscriptions. Commands are actions that will take place when an alarm changes state or a monitored situation occurs.

Commands	
Name	Settings
DisplayCamera	Monitor #57   Cell #3   Camera #3   Playback -5 secs
BookMark	Camera #3   Description: Example Bookmark.

## Creating a Command

1. Click the **+** icon on the lower right corner of the *Commands* panel.
2. From the drop-down menu, click to select the appropriate *Command Type*.




3. If you selected *Set Layout*, configure these command settings:
  - a. Select the *Cell Layout* to display.
  - b. Enter the *Monitor Number* or select the monitor on which to display the layout.
4. If you selected *Display Camera*, configure these command settings:
  - a. Enter the *Camera Number* or select the camera to be displayed.
  - b. Enter the *Cell number* of the monitor where the camera will be displayed. The cell number is 1 to X, where X is the number of cells in the layout. (For example: In the 4 x 4 layout, the cell may be 1 to 16).
  - c. Enter the *Monitor Number* or select the monitor on which to display the camera.

- d. (Optional) Click to select the radio button for *Live* to display live video.
  - e. (Optional) Click to select the radio button next to the time selections to display playback video. Type or select a number, and then select a unit of time (for example: **Minutes**) from the drop-down menu to specify how long before the triggering event playback will begin.
5. If you selected *Disconnect Camera*, configure these command settings:
    - a. Enter the *Cell number* of the monitor where the camera will be displayed. The cell number is 1 to X, where X is the number of cells in the layout. (For example: In the 4 x 4 layout, the cell may be 1 to 16).
    - b. Enter the *Monitor Number* or select the monitor that contains the camera.
  6. If you selected *Go to Preset*, configure these command settings:
    - a. Enter or select the *Preset* to trigger on the camera.
    - b. Enter the *Camera Number* or select the camera to control.
  7. If you selected *Run Pattern*, configure these command settings:
    - a. Enter or select the *Pattern* to run on the camera.
    - b. Enter the *Camera Number* or select the camera to control.
  8. If you selected *Set Relay State*, configure these command settings:
    - a. Enter the *Relay Number* to trigger.
    - b. Enter the *Device IP Address* where the relay is located.
    - c. Click to select the radio button for the state to set the relay, *Active* or *Inactive*.
  9. If you selected *Save Monitor State*, enter the *Monitor Number* or select the monitor to save.
  10. If you selected *Restore Monitor State*, enter the *Monitor Number* or select the monitor to restore.
  11. If you selected *Bookmark*, configure these command settings:
    - a. Enter the *Camera Number* or select the camera to bookmark.
    - b. Enter a *Description* that will be added to the bookmarks




**Note:** If this field is empty, the description of the bookmark will be "EventManager situation: ", followed by the situation type being injected (if any).

### Duplicating a Command

1. Click to select the command to duplicate from the *Commands* panel.
2. Click the  icon on the lower right corner of the *Commands* panel.
3. Change the command settings as needed.
4. For detailed instructions, see the section titled [Creating a Command](#).
5. Click **Save Changes**.

### Deleting a Command

1. Select the command to delete from the *Commands* Panel.
2. Click the  icon on the lower right corner of the *Commands* panel to open the *Delete Command* dialog box.
3. Click **Delete**.

## Locating Logs

- Logs are located at “C:\ProgramData\Pelco\EventMonitorConfigTool\Logs”.
- VxSdk logs are located at “C:\ProgramData\Pelco\VxSdk\Logs”.

## Pelco Troubleshooting Contact Information

For further assistance, contact Pelco Product Support at 1-800-289-9100 (USA and Canada) or +1-559-292-1981 (international).

## Version Information

### Configuration Tool Version

Component Name	Minimum Version	Description
Event Monitor Configuration Tool	1.0.0 (Software) / 3.8 (VX)	The Event Monitor Configuration Tool provides the ability to configure the various XML configuration files used by the Event Monitor Service through a user interface.

### Event Monitor Service Version

Component Name	Minimum Version	Description
VxEventMonitorService	3.7.3.0	The VideoXpert Event Monitor Service is capable of being configured to poll for alarms from various devices, taking the alarm data it gathers and performing various actions when an alarm state change occurs.





Pelco, Inc.  
625 W. Alluvial Ave., Fresno, California 93711 United States  
(800) 289-9100 Tel  
(800) 289-9150 Fax  
+1 (559) 292-1981 International Tel  
+1 (559) 348-1120 International Fax  
[www.pelco.com](http://www.pelco.com)

Pelco, the Pelco logo, and other trademarks associated with Pelco products referred to in this publication are trademarks of Pelco, Inc. or its affiliates. ONVIF and the ONVIF logo are trademarks of ONVIF Inc. All other product names and services are the property of their respective companies. Product specifications and availability are subject to change without notice.

© Copyright 2020, Pelco, Inc. All rights reserved.