

Sarix TI

THE EVOLUTION of THERMAL IMAGING



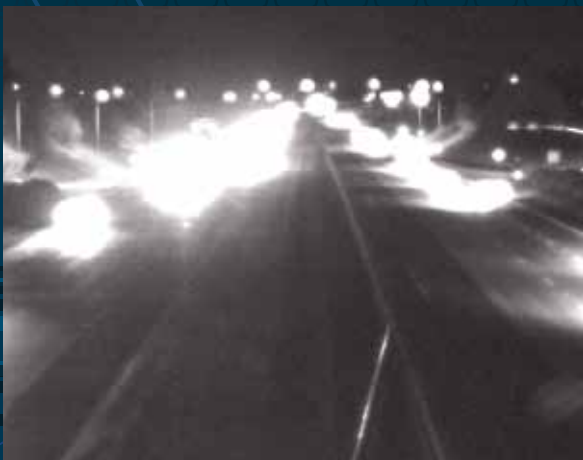
Thermal Imaging is associated with installations that require the highest level of threat detection, and have budgets to match. But if thermal image cameras are used to protect oil pipelines, why not gas stations? Power plants are protected by thermal, why not the small business powered by energy from those plants? Military personnel are secured with thermal technology when on base, shouldn't their families have the same protection at city parks?

With this in mind, Pelco by Schneider Electric engineers set out to create a new kind of thermal imaging camera. Their objective was to design a camera that delivers the performance and features the video security industry demands, but make that technology available at a price point that fits in practically any budget. Some of the most respected thermal imaging engineers took on this challenge, and their efforts are changing the way the video security industry thinks about thermal imaging.

INTRODUCING SARIX TI

“There are a number of thermal imaging cameras in the marketplace, but only one was created specifically for security professionals,” explains Dave Stanfield, Senior Product Marketing Manager. “Sarix TI features better integration capabilities, enhanced network compatibility and greater sensitivity than any competitive camera, while also delivering the best thermal imaging value available.”

While visible cameras see reflected light, the new Sarix TI sees emitted thermal energy. This means that with Sarix TI, light, whether reflected, artificially produced or the result of IP blooming from the headlights of cars, is no longer a consideration in video security applications. The ability to detect potential threats is now possible in any lighting condition, even in the absolute dead of night.



Standard camera.



Sarix TI – Clear images in any lighting condition.

sarix™ TI

Sarix TI revolutionizes the industry by combining thermal imaging with the Sarix technology platform. According to Applied Technology Engineer Manager David Dorn, this provides three distinct advantages. "First, Sarix is a very powerful image-processing engine that allows us to dramatically improve the image quality compared to previous thermal cameras. Secondly, it allows for the easy network integration of our thermal cameras into existing IP camera networks. And finally, thermal combined with the analytics integrated into the camera provides effective solutions for many security applications."

Sarix TI is available in three models. The 240x184 model is the most affordable way to experience thermal imaging technology. When outfitted with a 6.3mm lens, the 240x184 model can detect a person in a 35-degree field of view out of 140 meters. "It's an amazing level of performance for such a low cost point," Stanfield says. The next step up in the Sarix TI family is the 384x288 model. This camera is ideal for standard thermal imaging applications like borders, ports, airports, or any perimeter. And for critical applications like international borders, seaways or military installations there is the 640x480 model. This camera, combined with a 100m lens, is able to offer detection beyond four miles.

The introduction of Sarix TI opens a new world of possibility for the video security industry. "Pelco by Schneider Electric is the only manufacturer that offers an end-to-end solution that includes Thermal Imaging," Stanfield says. "And because these are hybrid analog/IP cameras, they are flexible enough to fit into any new or existing system."

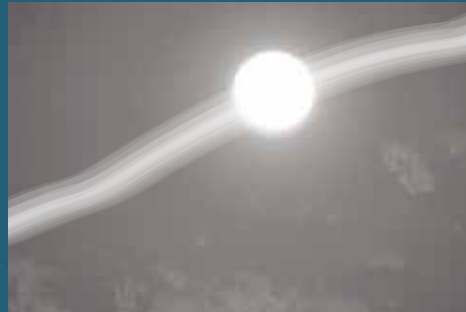
"Sarix TI features better integration capabilities, enhanced network compatibility and greater sensitivity than any competitive camera, while also delivering the best thermal imaging value available."

-Dave Stanfield, Senior Product Marketing Manager

According to Dorn, Sarix TI ushers in a new era for thermal imaging. "It's exciting to bring technology that was once limited to high-end military applications to mainstream video security. The ability to now deploy thermal with analytics in such a cost effective fashion opens up almost limitless new applications for this technology."

To learn more about Sarix TI and see this powerful new system in action visit www.pelco.com or contact your local manufacturers representative.

Uncorrected Image



45 Day Sun Exposure

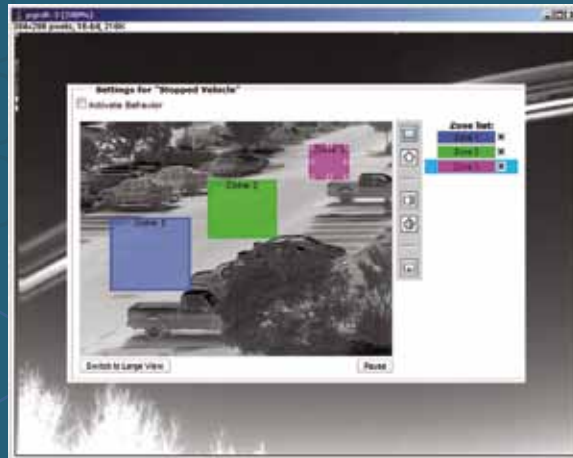
Corrected Image



45 Day Sun Exposure

SUN SAFE SENSOR

Microbolometers, the sensors used to create a thermal image, feature either Vanadium Oxide or Amorphous Silicon coatings on a silicon wafer. Amorphous Silicon is used in Sarix TI because it delivers several benefits including lower cost, but if left uncorrected the sensor could be damaged if pointed at the sun. Pelco by Schneider Electric engineers overcome this challenge by developing unique algorithms that provide automatic correction to eliminate the effects of sun damage.



THERMAL IMAGING MEETS ADVANCED ANALYTICS

The advanced processing power of the Sarix technology platform allows Sarix TI to support the Pelco Motion suite of Analytic behaviors. With Adaptive Motion the camera can detect directional motion of targets meeting specific size criteria. Camera Sabotage reports any attempt to reposition or obstruct the camera. Loitering Detection and Stopped Vehicle detect targets dwelling too long in an observed area. And Object Counting reports the number of targets crossing a trip line or entering an area in a specified direction.